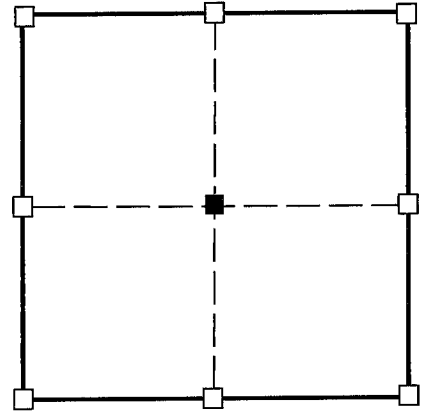
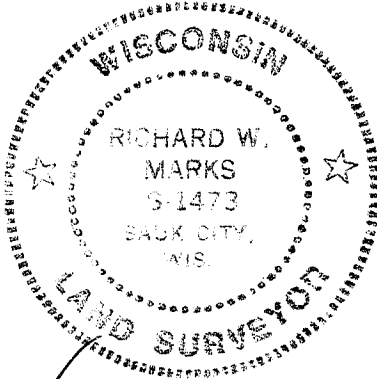


**U.S. PUBLIC LAND SURVEY MONUMENT RECORD - GRANT COUNTY, WI**

(a) Corner location:

Township 5 North  
 Range 6 West  
 Town of Wyalusing

I, Richard Marks certify that the corner location on this record was determined by me and that this U.S. public land survey monument record is correct and complete to the best of my knowledge and belief.



Dated this 11<sup>th</sup> day of April, 2000

*Richard W. Marks*  
 Richard Marks R.L.S. # S-1473

History of corner establishment:

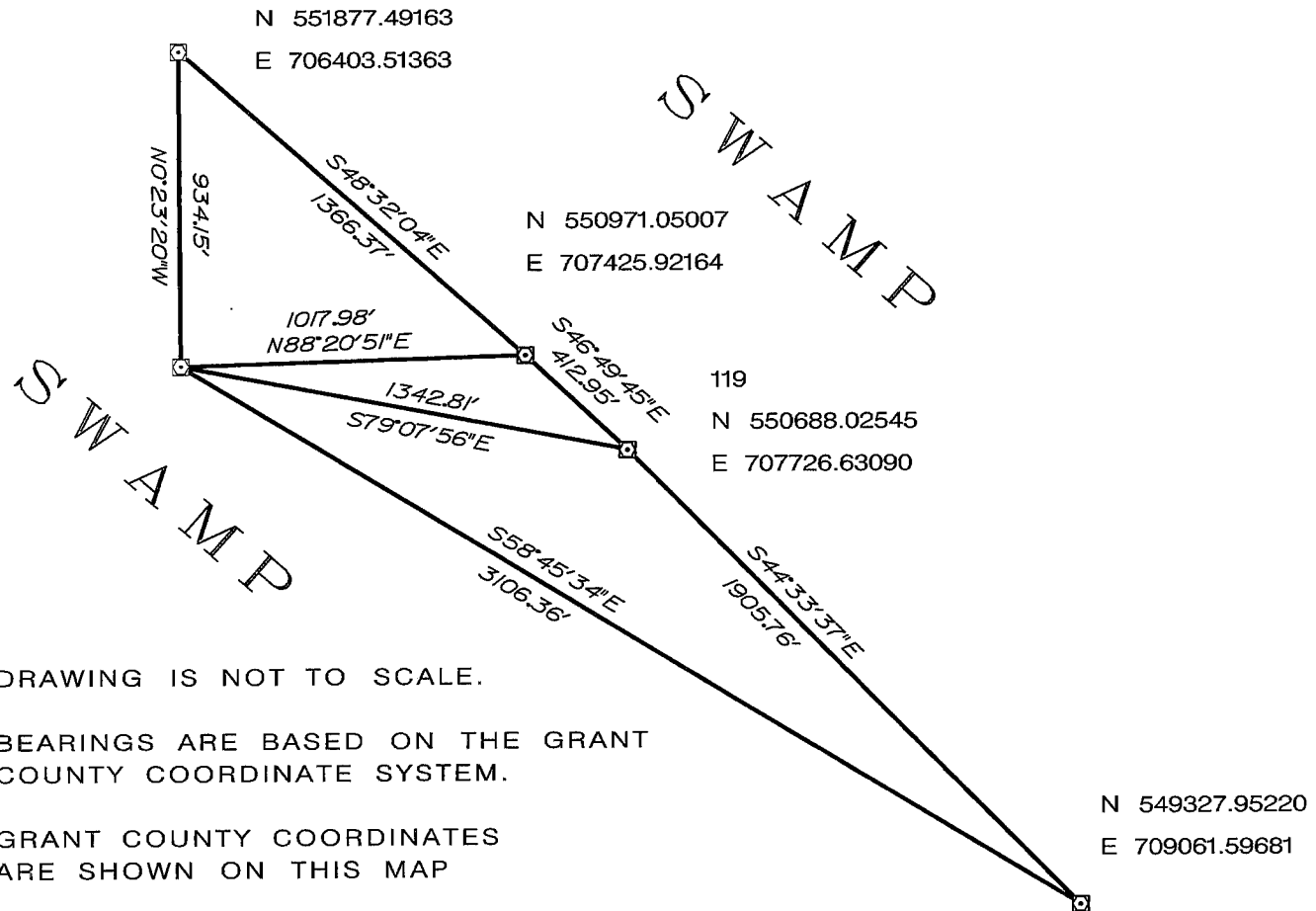
The original corner was established by the United States Army Corp of Engineers in 1936.

Description of corner evidence found:

I found a 4" square concrete monument with an Army Corp of Engineers Brass cap at this corner.

Description of corner and witness monuments, references and accessories used to perpetuate the original or re-established location of this corner.

- ☐ 4" square concrete monument with an Army Corp of Engineers Brass cap



DRAWING IS NOT TO SCALE.  
 BEARINGS ARE BASED ON THE GRANT COUNTY COORDINATE SYSTEM.  
 GRANT COUNTY COORDINATES ARE SHOWN ON THIS MAP

Control: COMBINATION OF GPS AND CONVENTIONAL FIELD CONTROL

Datum: WHP NETWORK		County coordinates		State plane coordinates (1983 NAD)	
Lat.		North	N 550943.36360	North	
Long.		East	E 706408.31729	East	