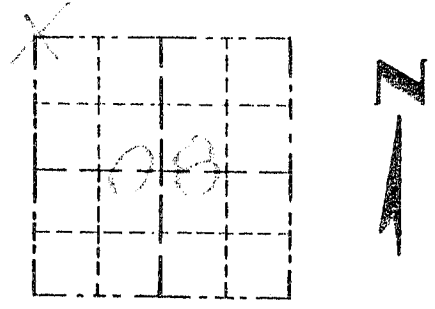


Survey Monument Record

TYPE OF MONUMENT 3/4" X 24" IRON
BAR SET

CORNER NO. 31
SECTION 08
TOWN 5N
RANGE 6W

FIELD BOOK: 96-06
PAGE (31)

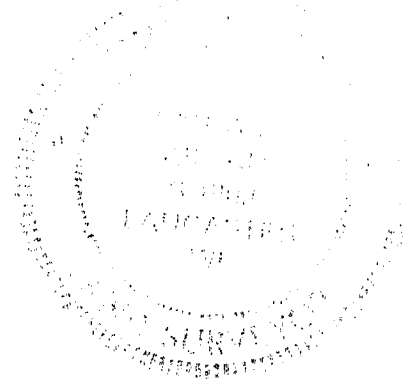


BASIS FOR MONUMENT LOCATION

(Use reverse side if necessary)
Show info such as: History of corner, with reference to Vol. and pg., dates, surveyor; exact description of monument replaced; if location computed, by taped or EDM traverse; landowner, remarks, etc.

CORNER SET IN 1832 BY ROBERT CLARK. IN 1891 CHARLES SAMPSON FOUND BOTH BEARING TREES AND SET A STONE. IN 1981 K.A. KERST FOUND A 7/8" IRON PIPE. IN 1991 RICHARD MARKS SET A 3/4" IRON ROD AT THE CORNER. I ACCEPTED THE LOCATION OF K.A. KERST AFTER EDM TRAVERSE OF AREA.

SEAL:



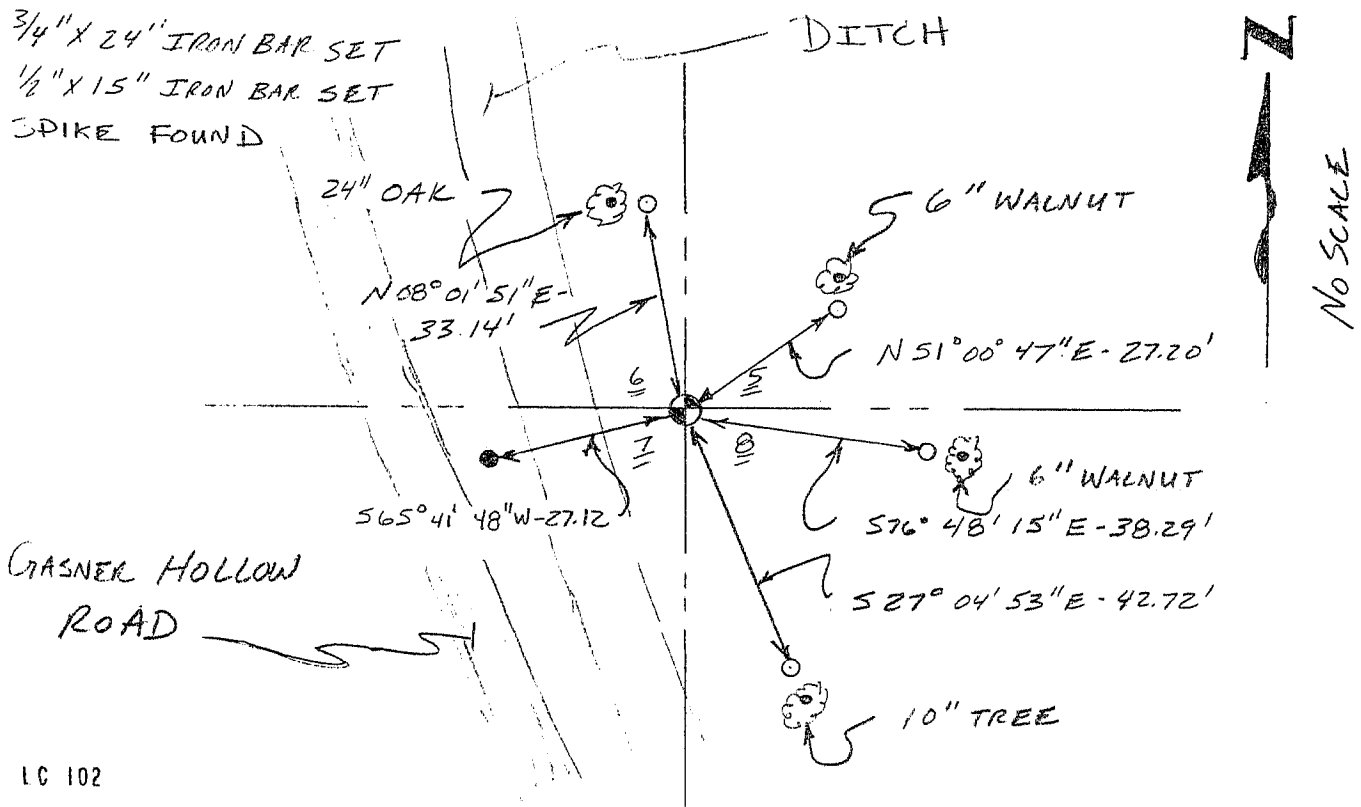
CERTIFIED CORRECT
Sam R. Kerst
Registered Land Surveyor
DATE: 12-20-97

TIE SKETCH

Show at least three (3) ties and monument

LEGEND

- 3/4" X 24" IRON BAR SET
- 1/2" X 15" IRON BAR SET
- SPIKE FOUND

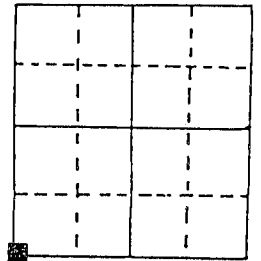


U.S. PUBLIC LAND SURVEY MONUMENT RECORD

Note: This form is intended and designed to fulfill all requirements of Wisconsin Administrative Code, Chapter A-E 5.02, U.S. Public Land Survey Monument Record (3) (a) (b) (c) (d) (e) (f) (g) (h) (i). An additional sheet may be added if necessary to conform with said requirements.

(a) Corner location: Township S North
Range 6 East/West

Town/City/Village Wyalusing
County Grant



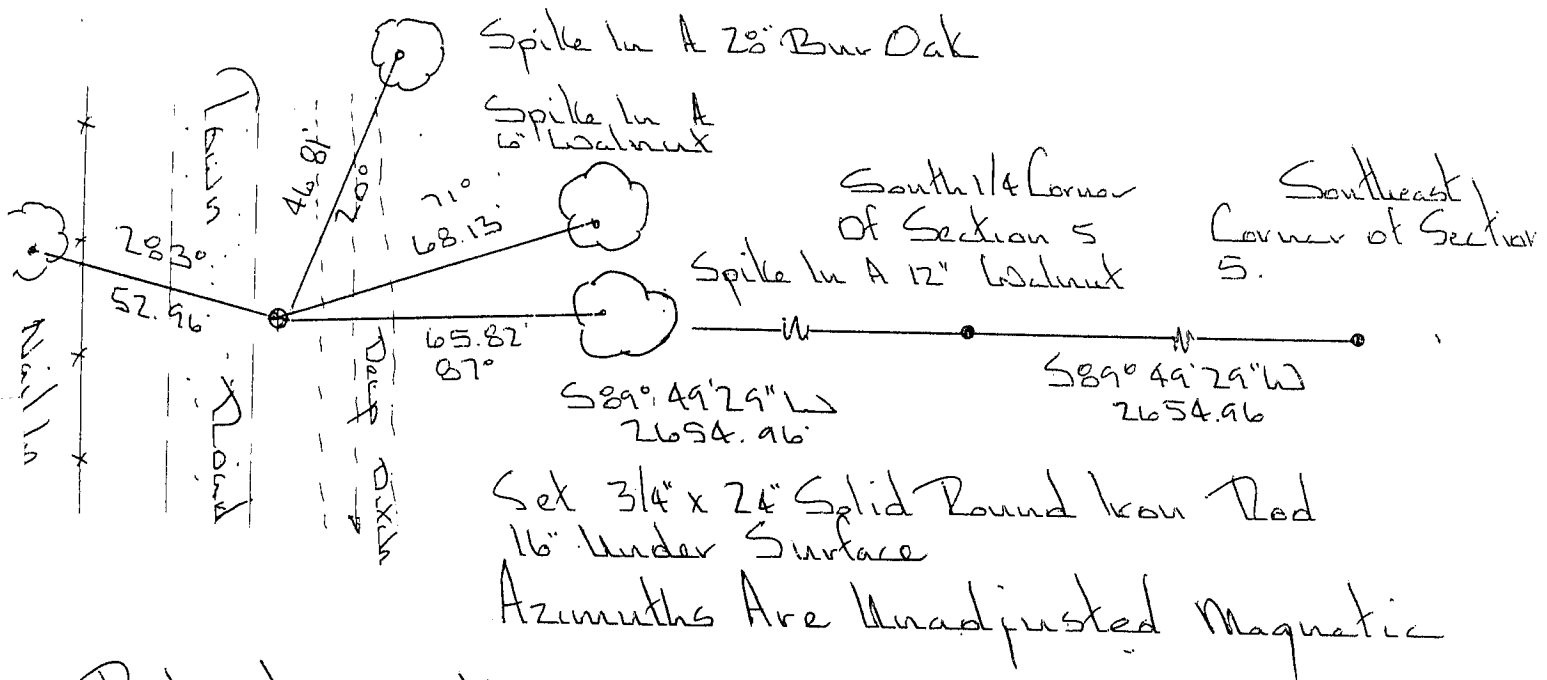
Section 5

(b) (f) (g) (h) Description of monument found at this corner and if it was accepted, state all evidence (material, testimonial, occupational, plat, records, other monuments) used as a basis for accepting. If not accepted or if nothing was found, state evidence used as basis for establishing location. If reestablished through lost corner proportionate methods, indicate all monuments, distances and directions used to establish.

Charles. Simpson was at this corner on July 6, 1891.

I set this corner by extending line and double the distance from the south 1/4 corner to the southeast corner of section 5.

(d) (e) Plan view of corner with ties to at least 4 witness monuments. If in disagreement with previously established corner, show the distances between the two corners and also indicate the ties to the disputed corner.

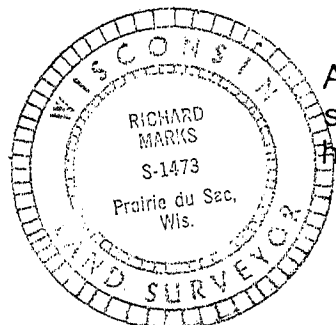


Richard Marks

(Type or print name) certify that the corner location on this record as determined by me or under my direction and control and that this U.S. Public Land Survey Monument Record is correct and complete to the best of my knowledge and belief.

Richard Marks

7/18/1991
Date



Affix seal here