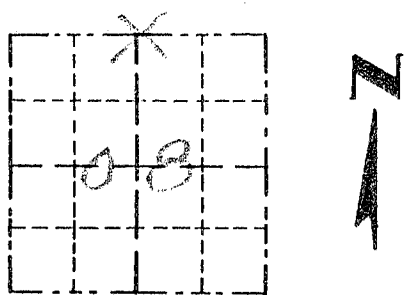


Survey Monument Record

TYPE OF MONUMENT 3/4" X 24" IRON BAR SET

CORNER NO. 30
 SECTION 08
 TOWN 5N
 RANGE 6W

FIELD BOOK: 96-06
 PAGE 30



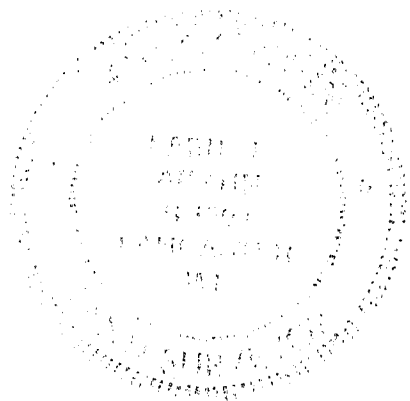
LOCATION
(Indicated by "X")

BASIS FOR MONUMENT LOCATION

(Use reverse side if necessary)

Show info such as: History of corner, with reference to Vol. and pg, dates, surveyor; exact description of monument replaced; if location computed, by taped or EDM traverse; landowner, remarks, etc.

SEAL:



CORNER SET IN 1832 BY ROBERT CLARK. IN 1878 JOEL BARBER MEASURED TO CORNER NO MONUMENT SET. IN 1891 CHARLES SAMPSON FOUND REMAIN OF BOTH BEARING TREES. IN 1901 K.A. KERST SET A 2" IRON PIPE AT THE CORNER. IN 1991 RICHARD MARKS SET AN 3/4" IRON BAR AT AN OCCUPIED FENCE CORNER. I ACCEPTED K.A. KERST 2" IRON PIPE AS THE CORNER VERIFIED ITS LOCATION USING EDM METHODS.

CERTIFIED CORRECT

Ray E. Aust
 Registered Land Surveyor

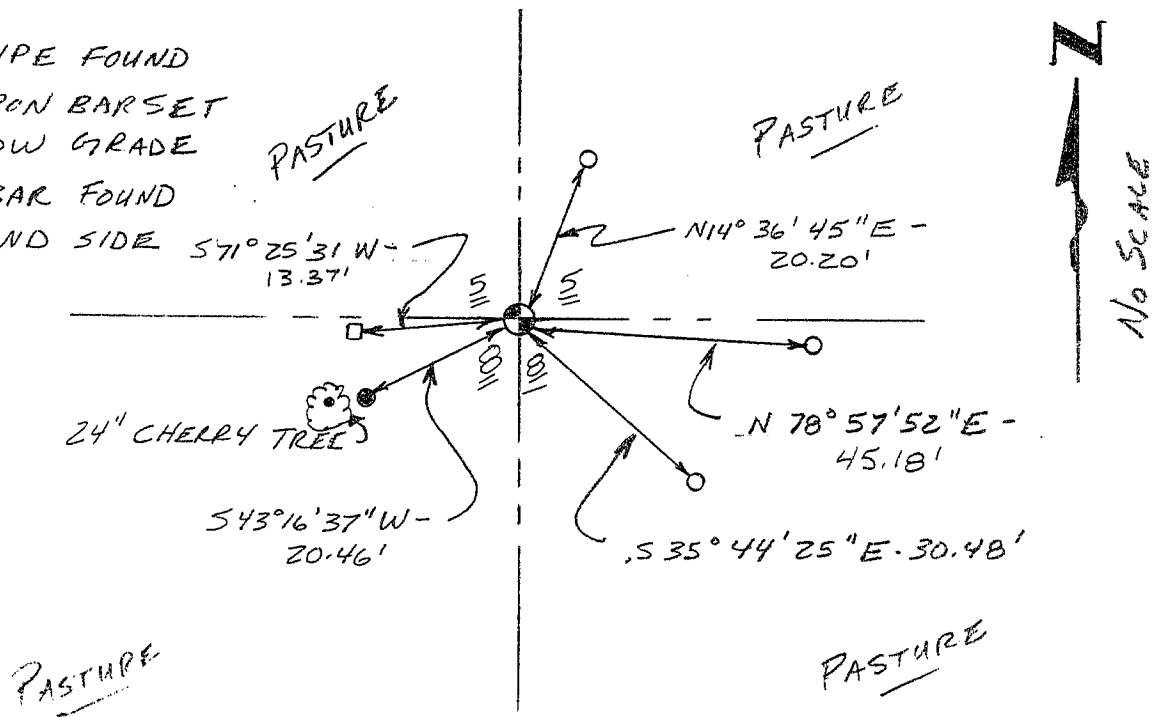
DATE: 12-20-97

TIE SKETCH

Show at least three (3) ties and monument

LEGEND

- ⊕ 2" IRON PIPE FOUND
- 1/2" X 15" IRON BAR SET 4" BELOW GRADE
- 3/4" IRON BAR FOUND
- SPIKE FOUND SIDE TREE.

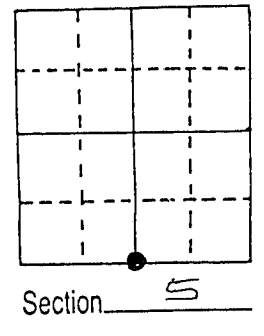


JUL 22 1991

U.S. PUBLIC LAND SURVEY MONUMENT RECORD

Note: This form is intended and designed to fulfill all requirements of Wisconsin Administrative Code, Chapter A-E 5.02, U.S. Public Land Survey Monument Record (3) (a) (b) (c) (d) (e) (f) (g) (h) (i). An additional sheet may be added if necessary to conform with said requirements.

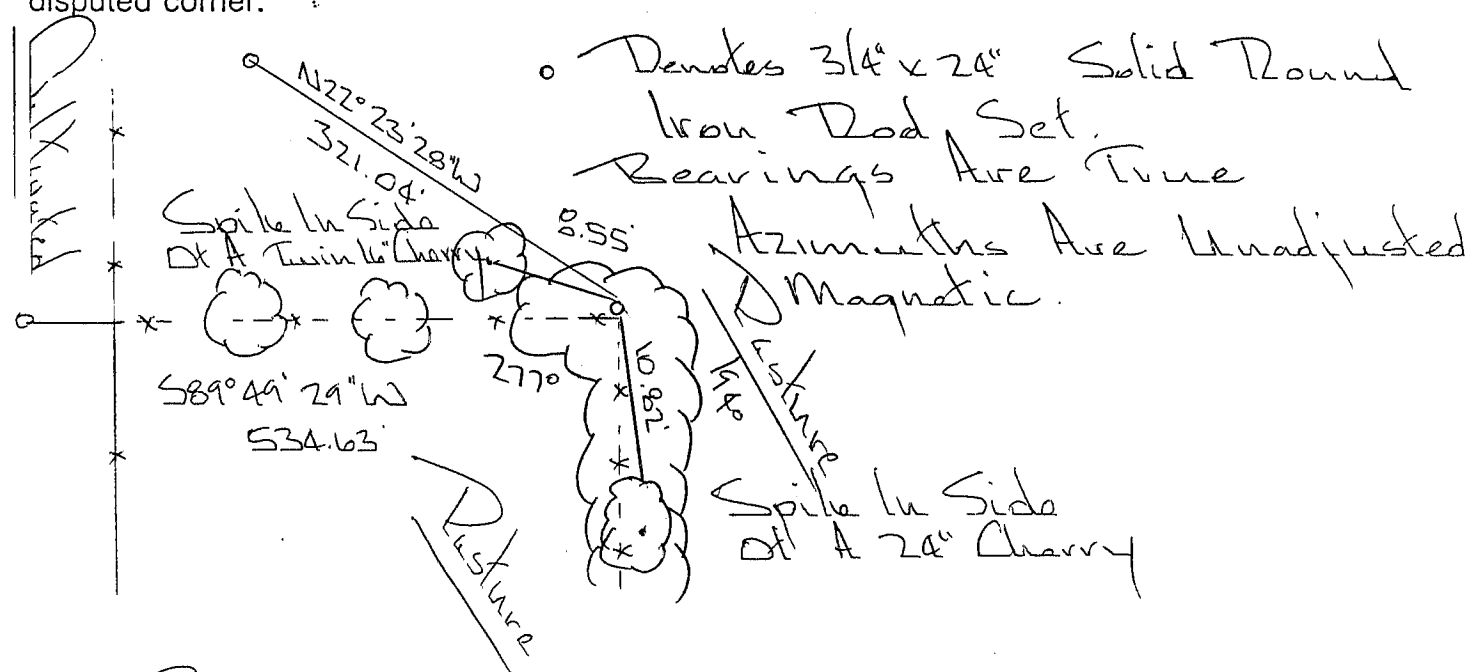
(a) Corner location: Township S North
Range 6 East/West
Town/City/Village Wyalusing
County Grant



(b) (f) (g) (h) Description of monument found at this corner and if it was accepted, state all evidence (material, testimonial, occupational, plats, records, other monuments) used as a basis for accepting. If not accepted or if nothing was found, state evidence used as basis for establishing location. If reestablished through lost corner proportionate methods, indicate all monuments, distances and directions used to establish.

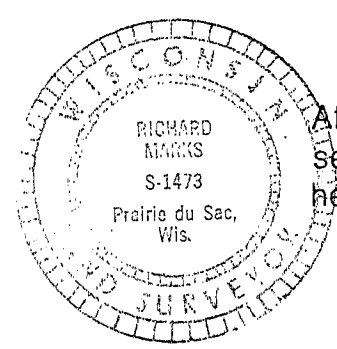
*Charles Sampson Was At This Corner On 7/6-1891
I Found An Old Fence Corner At This Corner*

(c) (d) (e) Plan view of corner with ties to at least 4 witness monuments. If in disagreement with previously established corner, show the distances between the two corners and also indicate the ties to the disputed corner.



(i) I, Richard Marks
(type or print name) certify that the corner location on this record was determined by me or under my direction and control and that this U.S. Public Land Survey Monument Record is correct and complete to the best of my knowledge and belief.

Richard Marks
Signature Date



Affix seal here