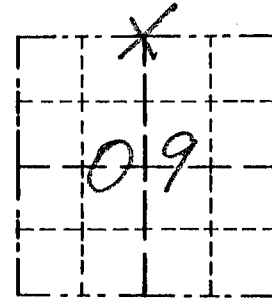


Survey Monument Record

TYPE OF MONUMENT 2" X 8" STONE
FOUND

CORNER NO. 28
 SECTION 09
 TOWN 5N
 RANGE 6W

FIELD BOOK: 97-02
 PAGE (28)



BASIS FOR MONUMENT LOCATION

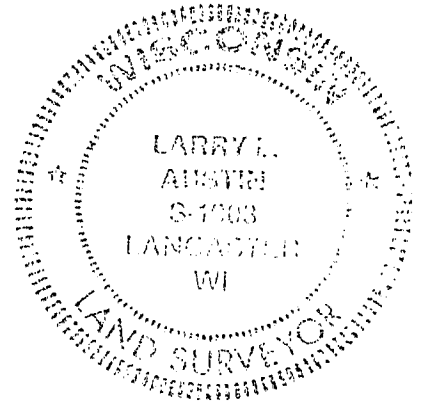
(Use reverse side if necessary)

Show info such as: History of corner, with reference to Vol. and pg., dates, surveyor; exact description of monument replaced; if location computed, by taped or EDM traverse; landowner, remarks, etc.

LOCATION
 (Indicated by "X")

SEAL:

CORNER SET IN 1832 BY ROBERT CLARK. NO RECORD OF CORNER FOUND SINCE ORIGINAL SURVEY; A 2" X 8" STONE WAS FOUND AT A PROJECTION OF FENCES FROM THE NORTH & FROM THE WEST. I ACCEPTED THE STONE AS THE CORNER LOCATION AFTER VERIFICATION BY EDM TRAVERSE.



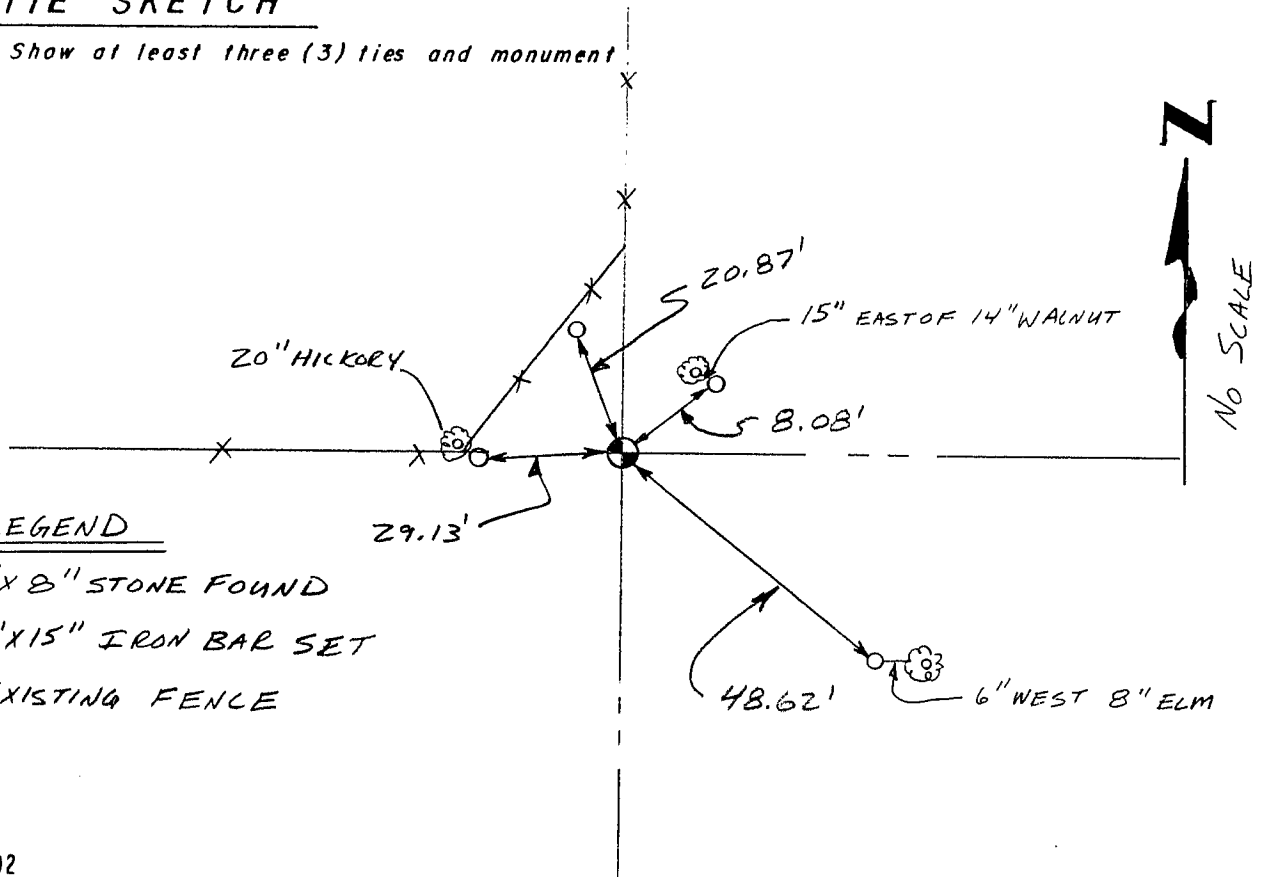
CERTIFIED CORRECT

Larry L. Austin
 Registered Land Surveyor

DATE: 4/13/98

TIE SKETCH

Show at least three (3) ties and monument



LEGEND

- ⊕ 2" X 8" STONE FOUND
- 1/2" X 15" IRON BAR SET
- XX EXISTING FENCE