

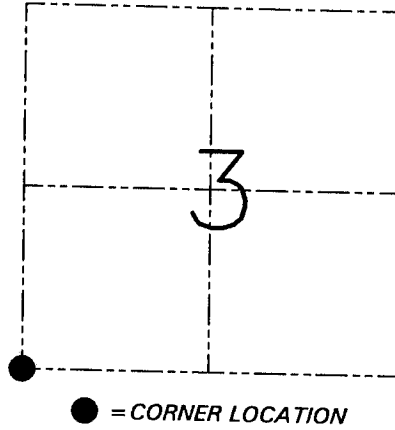
U.S. PUBLIC LAND SURVEY MONUMENT RECORD - GRANT COUNTY, WI
 Section 3, Town 5 North Range 6 West, Town of Wyalusing

CERTIFICATE

I, Larry L. Austin, do hereby certify that the corner location on this record was determined by me and/or under my direct supervision and that this U.S. public land survey monument record is correct and complete to the best of my knowledge and belief.

Dated this 18th day of September, 2001

Larry L. Austin
 Larry L. Austin S-1903



HISTORY OF CORNER ESTABLISHMENT

Corner was originally set in 1832 by Robert Clark.
 In 1878 Barber tied to the original corner. No other record of the corner found.

DESCRIPTION OF CORNER EVIDENCE FOUND



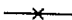
I reset the corner proportionately between the South 1/4 Section 4 and the South 1/4 Section 3. Verified this location using EDM & GPS methods.

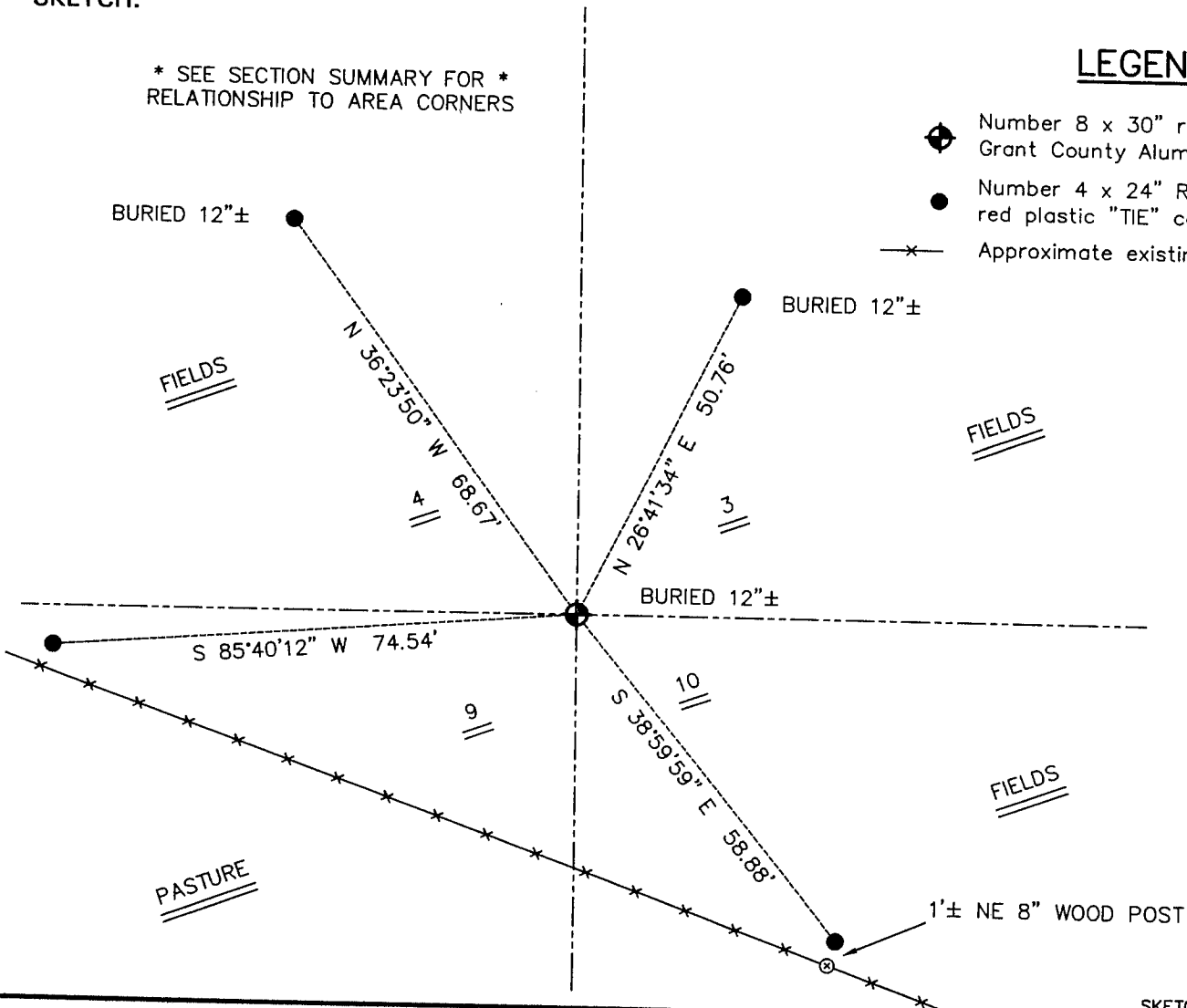
DESCRIPTION OF CORNER AND WITNESS MONUMENTS, references and accessories used to perpetuate the original or re-established location of this corner. Witnesses to the corner location Bobby Sedgwick & Shane Austin & Tim Fauver

SKETCH:

* SEE SECTION SUMMARY FOR *
 RELATIONSHIP TO AREA CORNERS

LEGEND

-  Number 8 x 30" rebar set with Grant County Aluminum Cap
-  Number 4 x 24" Rebar set with red plastic "TIE" cap
-  Approximate existing fence



SKETCH NOT TO SCALE

AUSTIN ENGINEERING, LLC

4211 HWY 81 EAST, LANCASTER, WI 53813
 PHONE 608-723-6363 FAX 608-723-6702

FIELDBOOK: SDR33, 2042
 G: \T6NR6W\33A
 C: \SWA\TIE\T5NR6W\27
 CREW: BS-SB-SA-TF

DRAWN BY: SW AUSTIN
 APPROVED: LL AUSTIN

CORNER NUMBER 27