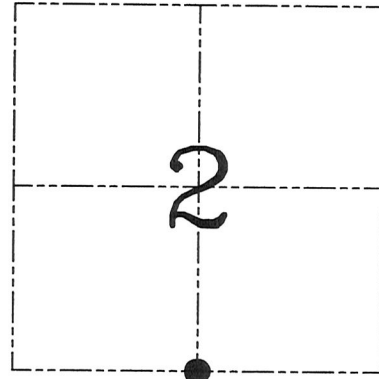


**U.S. PUBLIC LAND SURVEY MONUMENT RECORD – GRANT COUNTY, WI**  
**Section 2, Town 5 North Range 6 West, Town of Wyalusing**

CERTIFICATE

I, Larry L. Austin, do hereby certify that the corner location on this record was determined by me and/or under my direct supervision and that this U.S. public land survey monument record is correct and complete to the best of my knowledge and belief.

*Larry L. Austin*  
 Larry L. Austin, S-1903



● =CORNER LOCATION

HISTORY OF CORNER ESTABLISHMENT

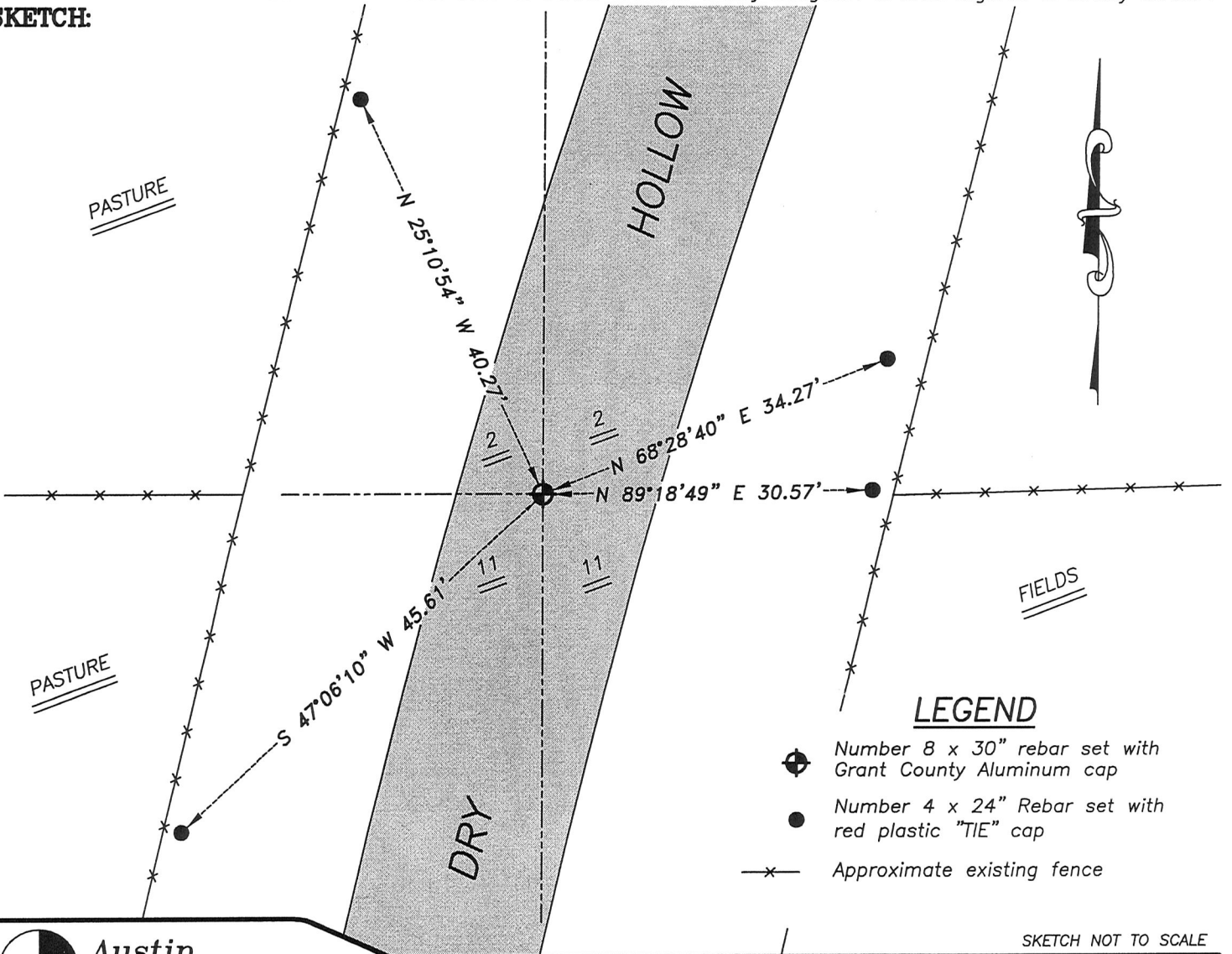
Corner was originally set in 1832 by Clark. In 1878 Barber tied to the original corner. No other record of the corner was found.

DESCRIPTION OF CORNER EVIDENCE FOUND

I reset the corner on-line with fence East & West and proportionately to Barber's dimensions. Verified this location using an EDM & GPS traverse of the area.

DESCRIPTION OF CORNER AND WITNESS MONUMENTS, references and accessories used to perpetuate the original or re-established location of this corner. Witnesses to corner location Bobby Sedgwick & Brad Digan & Shelby Blindert

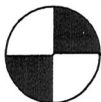
**SKETCH:**



**LEGEND**

- Number 8 x 30" rebar set with Grant County Aluminum cap
- Number 4 x 24" Rebar set with red plastic "TIE" cap
- x- Approximate existing fence

SKETCH NOT TO SCALE



**Austin Engineering LLC**

4211 HWY 81 E, LANCASTER, WI 53813  
 PHONE 608-723-6363 FAX 608-723-6702

JOB NUMBER 06S227  
 FIELDBOOK: TDSR, 2603  
 G:\T6NR6W\33A  
 H:\TIE\T5NR6W\24

DRAWN BY: SW AUSTIN  
 APPROVED: LL AUSTIN