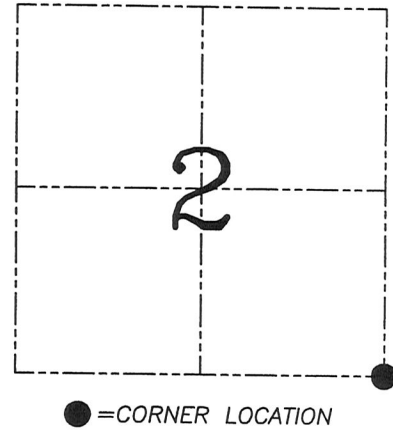


U.S. PUBLIC LAND SURVEY MONUMENT RECORD – GRANT COUNTY, WI
Section 2, Town 5 North Range 6 West, Town of Wyalusing

CERTIFICATE

I, Larry L. Austin, do hereby certify that the corner location on this record was determined by me and/or under my direct supervision and that this U.S. public land survey monument record is correct and complete to the best of my knowledge and belief.

Larry L. Austin 2/23/07
 Larry L. Austin, S-1903 date



HISTORY OF CORNER ESTABLISHMENT

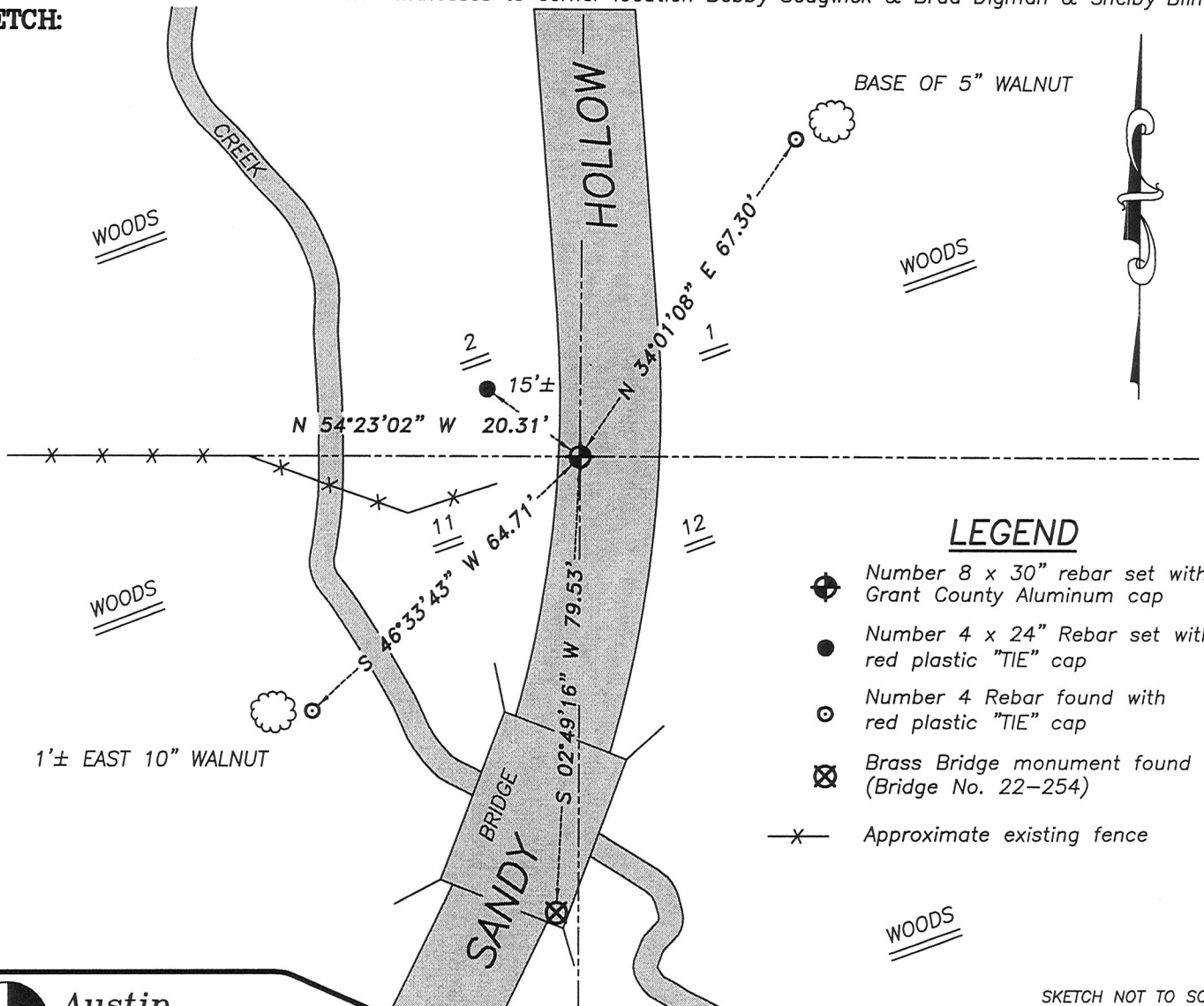
Corner was originally set in 1832 by Clark. In 1878 Barber tied to the corner. In 2000 I set and tied the corner. No other record of the corner was found.

DESCRIPTION OF CORNER EVIDENCE FOUND

I was unable to locate the monument due to recent bridge construction. I reset the corner based on two existing ties. Verified this location using EDM & GPS methods.

DESCRIPTION OF CORNER AND WITNESS MONUMENTS, references and accessories used to perpetuate the original or re-established location of this corner. Witnesses to corner location Bobby Sedgwick & Brad Digman & Shelby Blindert

SKETCH:



SKETCH NOT TO SCALE

Austin Engineering LLC
 4211 HWY 81 E, LANCASTER, WI 53813
 PHONE 608-723-6363 FAX 608-723-6702

JOB NUMBER 06S227
 FIELDBOOK: TDSR, 2603
 G:\T6NR6W\33A
 H:\TIE\T5NR6W\23

DRAWN BY: SW AUSTIN
 APPROVED: LL AUSTIN

GRANT COUNTY CERTIFIED LAND CORNER

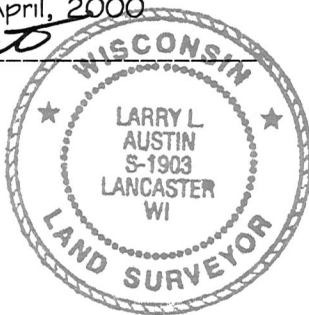
CORNER NUMBER 23

CERTIFICATE:

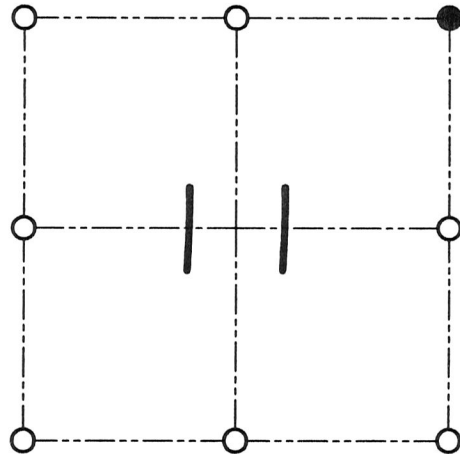
I, Larry L. Austin, do hereby certify that on the 25th day of April, 2000, I found evidence of the Northeast corner of Section 11, Town 5 North, Range 6 West, of the 4th Principal Meridian, and I re-established said corner according to the Wisconsin statutes as shown and described hereon.

Dated this 28th day of April, 2000

Larry L. Austin
Larry L. Austin S-1903



SEAL



● = CORNER LOCATION

NORTHEAST CORNER OF
SECTION 11, T 5 N R 6 W
TOWN OF WYALUSING

HISTORY OF ORIGINAL CORNER ESTABLISHMENT:

Corner was originally set in 1832 by Robert Clark. In 1878 Joel Barber tied to the corner and found the Bearing trees to be inconsistent.

DESCRIPTION OF CORNER EVIDENCE FOUND:

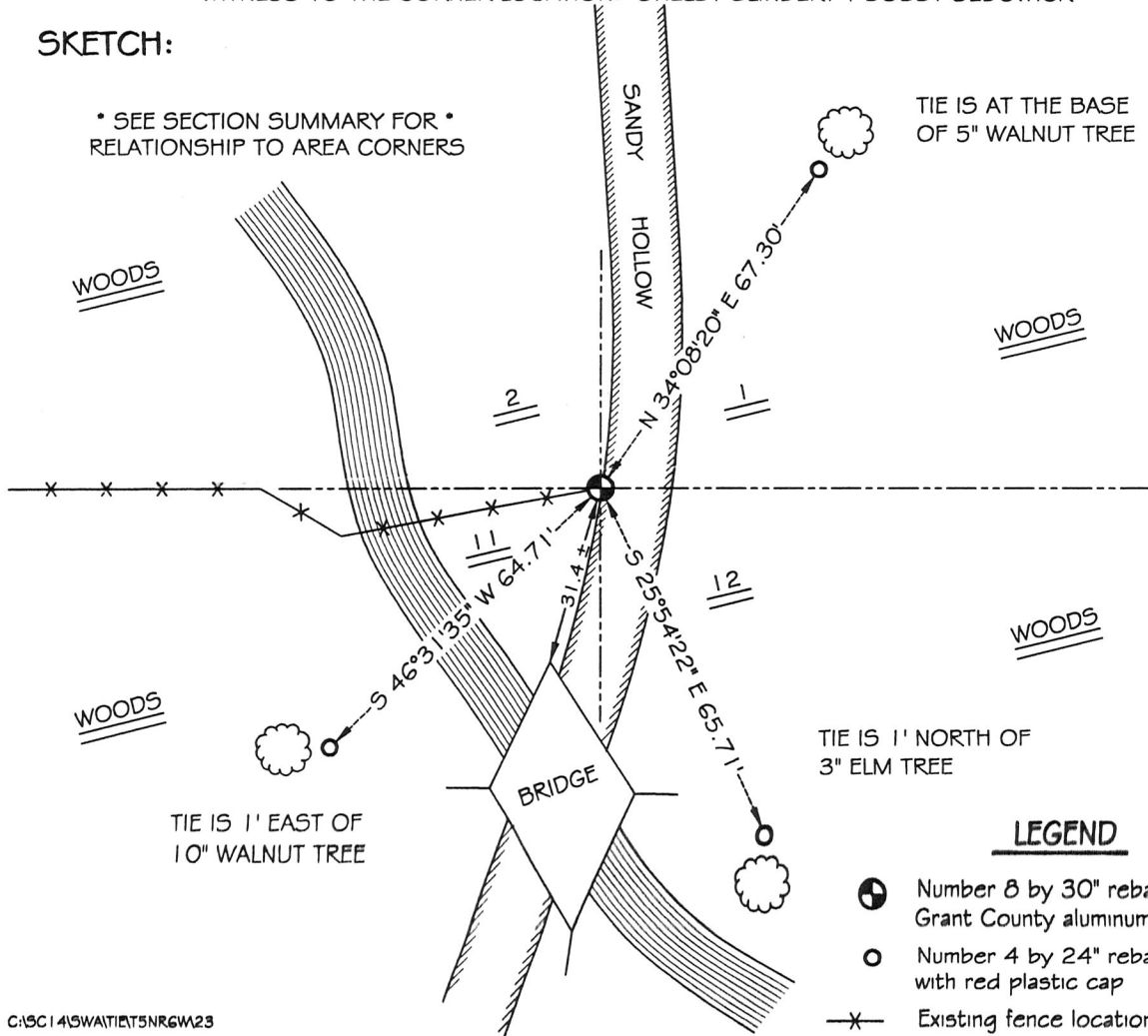
I reset the corner based on monuments along the East line of the Northeast 1/4 which fit very well with Barbers measurements. Verified it's location using E.D.M. & G.P.S. methods.

DESCRIPTION OF CORNER AND WITNESS MONUMENTS, references and accessories used to perpetuate the original or re-established location of this corner

WITNESS TO THE CORNER LOCATION: SHELBY BLINDERT & BOBBY SEDGWICK

SKETCH:

* SEE SECTION SUMMARY FOR *
RELATIONSHIP TO AREA CORNERS



LEGEND

- Number 8 by 30" rebar set with Grant County aluminum cap
- Number 4 by 24" rebar set with red plastic cap
- x— Existing fence location