

GRANT COUNTY CERTIFIED LAND CORNER

CORNER NUMBER 20

CERTIFICATE:

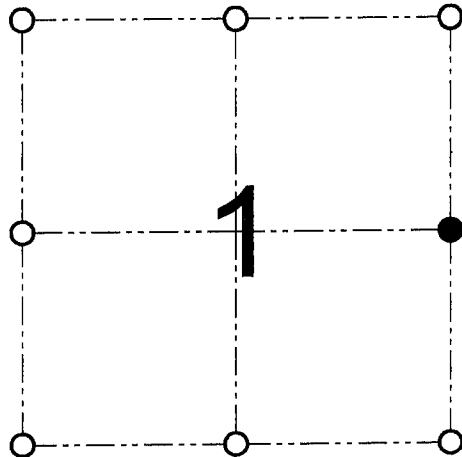
I, Larry L. Austin, do hereby certify that on the 29th day of December, 2000, I found no evidence of the East 1/4 corner of Section 1, Town 5 North, Range 6 West, of the 4th Principal Meridian, and I re-established said corner according to the Wisconsin statutes as shown and described hereon.

Dated this 16th day of January 2001

Larry L. Austin
Larry L. Austin S-1903



SEAL



● = CORNER LOCATION

EAST 1/4 CORNER OF SECTION 1, T 5 N R 6 W TOWN OF BLOOMINGTON

HISTORY OF ORIGINAL CORNER ESTABLISHMENT:

Corner was originally set in 1832 by Sibley. In 1881 J.C. Scott found the original corner. In 1899 Sampson found a Stone.

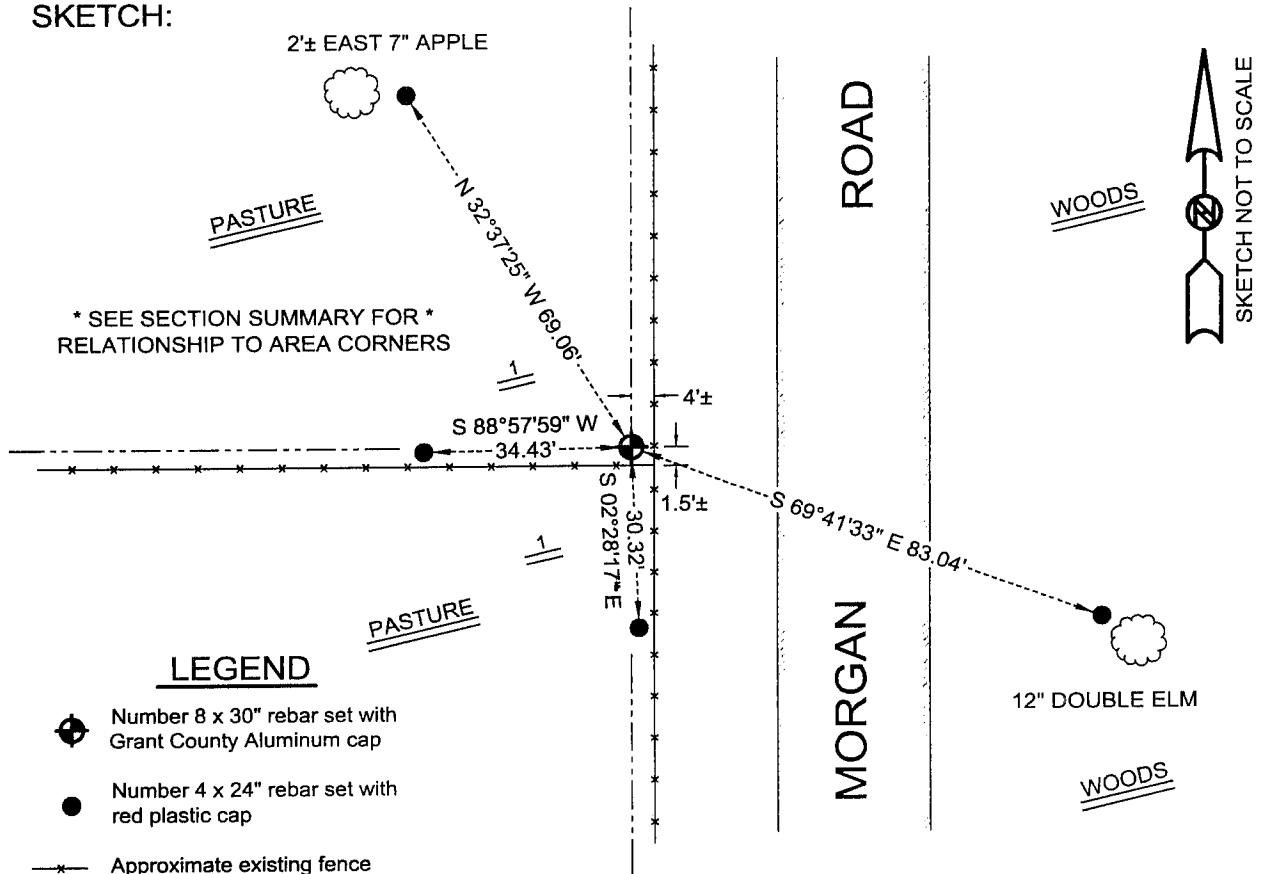
DESCRIPTION OF CORNER EVIDENCE FOUND:

I found occupational evidence of both Scott's & Sampson's surveys.
I reset the corner based on proportionate measurements to these corners.
Verified this location using EDM & GPS methods.

DESCRIPTION OF CORNER AND WITNESS MONUMENTS, references and accessories used to perpetuate the original or re-established location of this corner

WITNESS TO THE CORNER LOCATION: SHANE AUSTIN & TIM FAUVER & BOBBY SEDGWICK

SKETCH:



* SEE SECTION SUMMARY FOR *
RELATIONSHIP TO AREA CORNERS

LEGEND

- Number 8 x 30" rebar set with Grant County Aluminum cap
- Number 4 x 24" rebar set with red plastic cap
- *— Approximate existing fence

SKETCH NOT TO SCALE

AUSTIN ENGINEERING, LLC
4211 HWY 81 E, LANCASTER, WI 53813
PHONE 608-723-6363 FAX 608-723-6702

FIELDBOOK: SDR33, 9814
G:\T5NR6W\01
C:\SC14\SWA\TIE\T5NR6W\20

DRAWN BY: SW AUSTIN
APPROVED: LL AUSTIN
CREW: BS - SB - SA - TF