

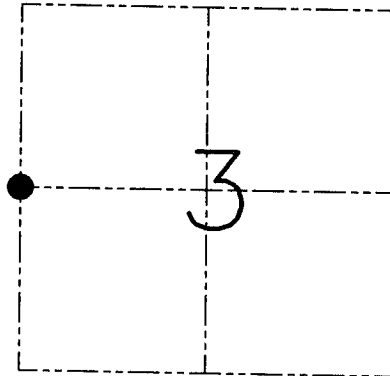
**U.S. PUBLIC LAND SURVEY MONUMENT RECORD - GRANT COUNTY, WI**  
 Section 3, Town 5 North Range 6 West, Town of Wyalusing

**CERTIFICATE**

I, Larry L. Austin, do hereby certify that the corner location on this record was determined by me and/or under my direct supervision and that this U.S. public land survey monument record is correct and complete to the best of my knowledge and belief.

Dated this 18th day of September, 2000

*Larry L. Austin*  
 Larry L. Austin S-1903



● = CORNER LOCATION

**HISTORY OF CORNER ESTABLISHMENT**

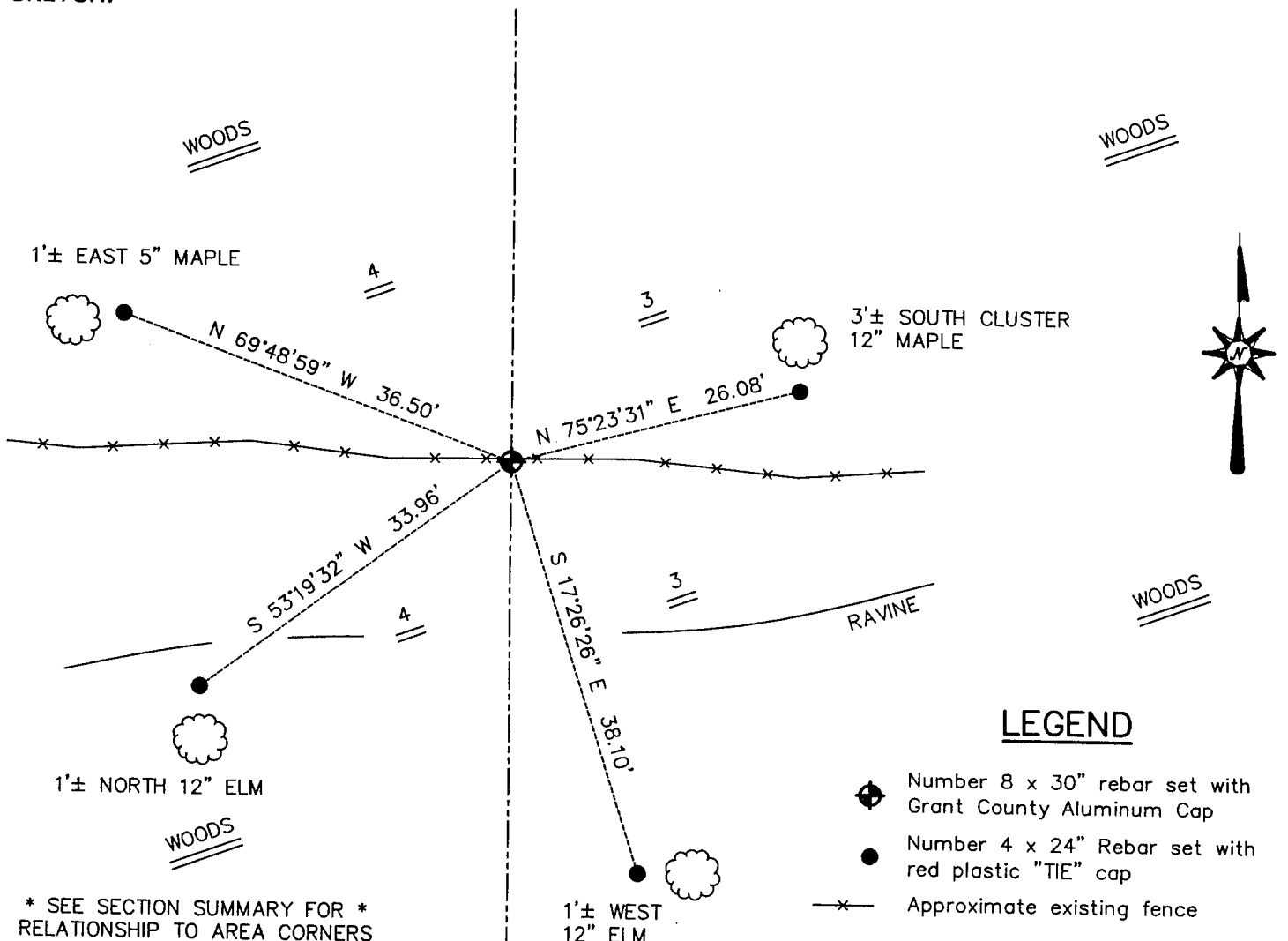
Corner was originally set in 1832 by Robert Clark. In 1878 Joel Barber tied to the corner. No other record of the corner was found.

**DESCRIPTION OF CORNER EVIDENCE FOUND**

I found a split in the fence with a large set post. I accepted this as the location of the corner. Verified this location using EDM & GPS methods.

**DESCRIPTION OF CORNER AND WITNESS MONUMENTS, references and accessories used to perpetuate the original or re-established location of this corner. Witnesses to the corner location Bobby Sedgwick & Shane Austin & Tim Fauver**

**SKETCH:**



\* SEE SECTION SUMMARY FOR \*  
 RELATIONSHIP TO AREA CORNERS

**LEGEND**

- ◆ Number 8 x 30" rebar set with Grant County Aluminum Cap
- Number 4 x 24" Rebar set with red plastic "TIE" cap
- x— Approximate existing fence

SKETCH NOT TO SCALE

**AUSTIN ENGINEERING, LLC**  
 4211 HWY 81 EAST, LANCASTER, WI 53813  
 PHONE 608-723-6363 FAX 608-723-6702

FIELDBOOK: SDR33, 2042  
 G:\T6NR6W\33A  
 C:\SWA\TIE\T5NR6W\17  
 CREW: BS-SB-SA-TF

DRAWN BY: SW AUSTIN  
 APPROVED: LL AUSTIN

**CORNER NUMBER 17**