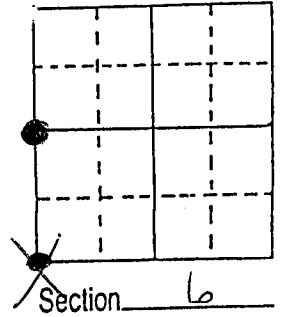


U.S. PUBLIC LAND SURVEY MONUMENT RECORD

Note: This form is intended and designed to fulfill all requirements of Wisconsin Administrative Code, Chapter A-E 5.02, U.S. Public Land Survey Monument Record (3) (a) (b) (c) (d) (e) (f) (g) (h) (i). An additional sheet may be added if necessary to conform with said requirements.

(a) Corner location: Township 5 North
Range 6 East/West

Town/City/Village Wyalusing
County Grant

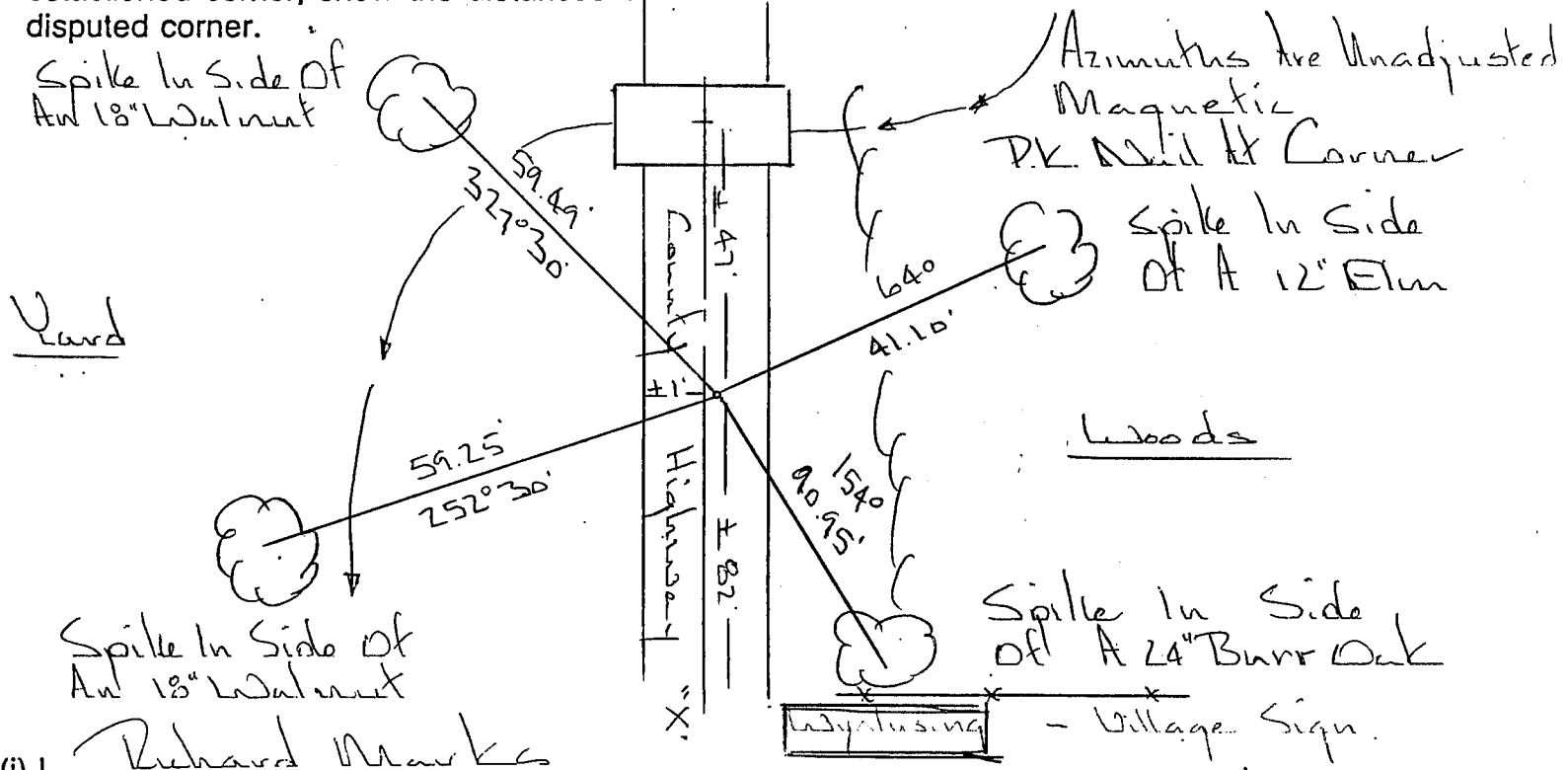


(b) (f) (g) (h) Description of monument found at this corner and if it was accepted, state all evidence (material, testimonial, occupational, plats, records, other monuments) used as a basis for accepting. If not accepted or if nothing was found, state evidence used as basis for establishing location. If reestablished through lost corner proportionate methods, indicate all monuments, distances and directions used to establish.

Found a P.K. nail set by Homer Ralph on survey in Village of Wyalusing. Nail also used by Paul Brashaw on surveys in Village.

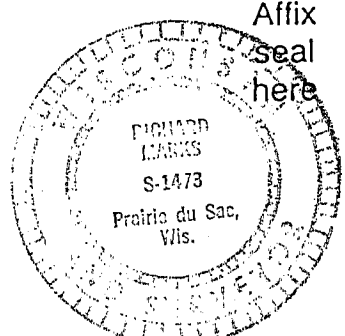
(Note Discrepancy Between Original Field Notes And Original Plat. This Location Matches Original Field Notes.)

(c) (d) (e) Plan view of corner with ties to at least 4 witness monuments. If in disagreement with previously established corner, show the distances between the two corners and also indicate the ties to the disputed corner.



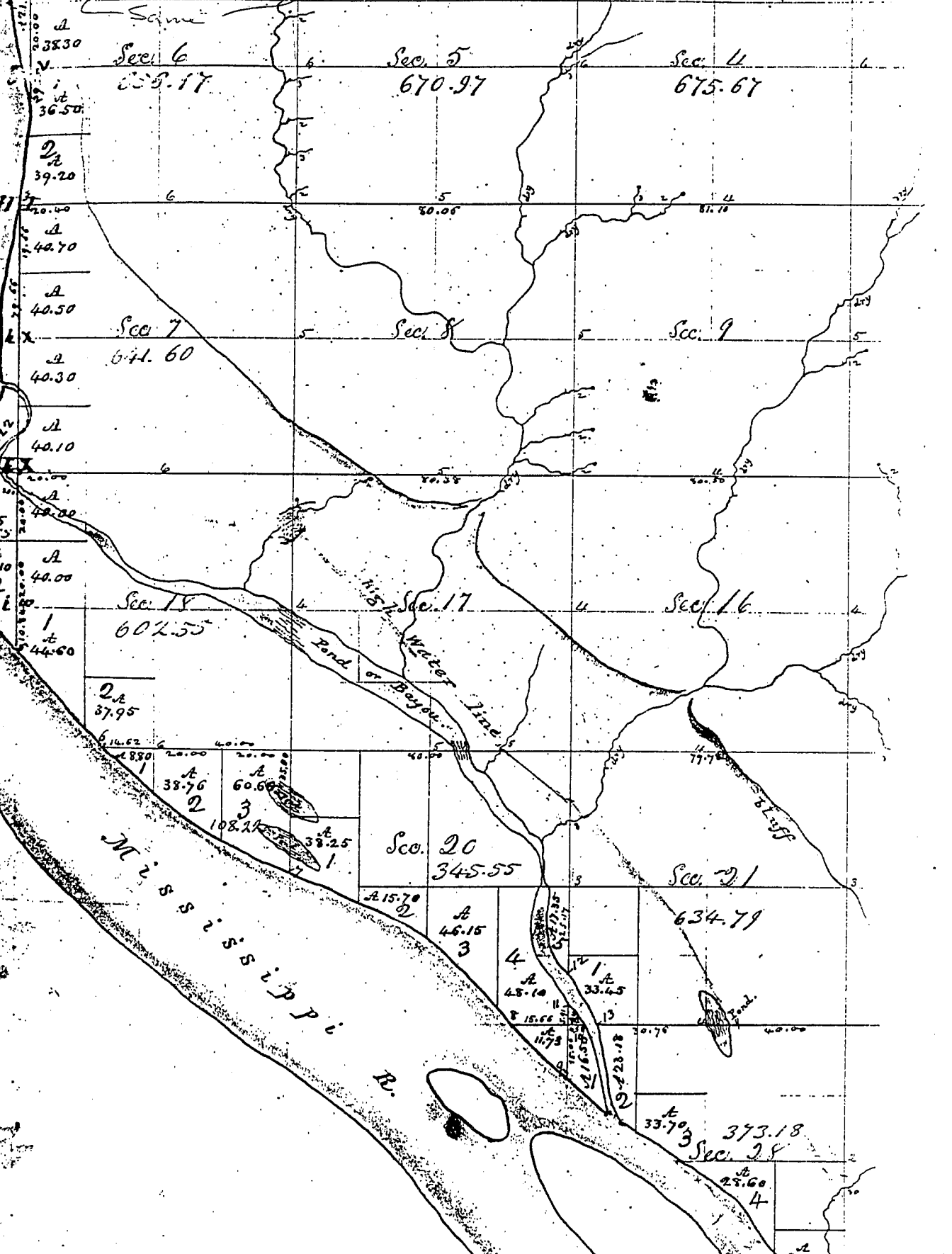
(i) I, Richard Marks
(type or print name) certify that the corner location on this record was determined by me or under my direction and control and that this U.S. Public Land Survey Monument Record is correct and complete to the best of my knowledge and belief.

Signature [Signature] Date _____



Township N^o 5, Ranges N^{os} 6 & 7

+	a			B		b		c		c		D	
20.00	18.29	20.00	20.00	20.00	20.00	20.00	20.00	20.00	24.50	20.00	20.00	20.00	20.00
A	A	A	A	A	A	A	A	A	A	A	A	A	A
43.03	46.38	46.38	46.38	46.76	47.41	48.07	48.73	49.42	49.09	48.75	48.41	47.80	47.80



70

(N. W. Sec)

Township No. 5 North R 6 W

North On East side Section 1
 8.00 Stream 6 lks on S. E.
 40.00 Set post for $\frac{1}{4}$ Section corner
 Burr Oak 7 S 44 W 2.72
 do 5 N 29 $\frac{1}{2}$ W 2.98
 70.00 Spring on West
 80.00 Set post for Temporary Lower
 corner
 Land selling - Soil 1st rate
 very thickly timbered with Oak
 Thursday May 3rd - 1832

(N. W. Sec)

Range No. 7 W 4th Meridian.

71

North On East side section 1 9.00 E.
 29.79 W. Oak 9
 40.00 Set post for $\frac{1}{4}$ section corner
 Burr Oak 20 N 23 W 3.44
 do 25 S 2 W 5.97
 53.96 To a Lynn & corner for meandering
 on bank Mississippi R.
 S 53 $\frac{1}{4}$ W 30.18 To corner sec 1 & 12
 Land under 1st rate
 thickly timbered with Oak