

# GRANT COUNTY CERTIFIED LAND CORNER

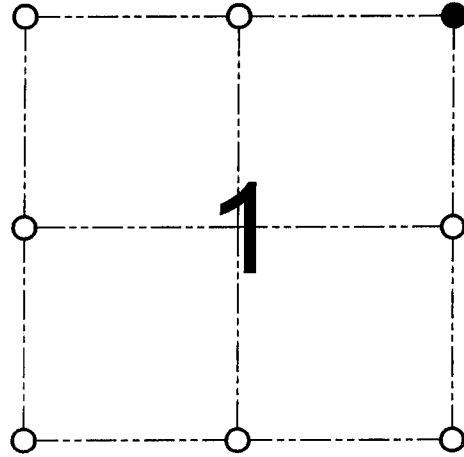
CORNER NUMBER 1

**CERTIFICATE:**

I, Larry L. Austin, do hereby certify that on the 29th day of December, 2000, I found evidence of the Northeast corner of Section 1, Town 5 North, Range 6 West, of the 4th Principal Meridian, and I re-established said corner according to the Wisconsin statutes as shown and described hereon.

Dated this 15th day of January, 2001

*Larry L. Austin*  
Larry L. Austin S-1903



● = CORNER LOCATION  
NORTHEAST CORNER OF SECTION 1, T 5 N R 6 W TOWN OF BLOOMINGTON

**HISTORY OF ORIGINAL CORNER ESTABLISHMENT:**

Corner was originally set in 1832 by Sibley.  
In 1881 JC Scott found the original corner.

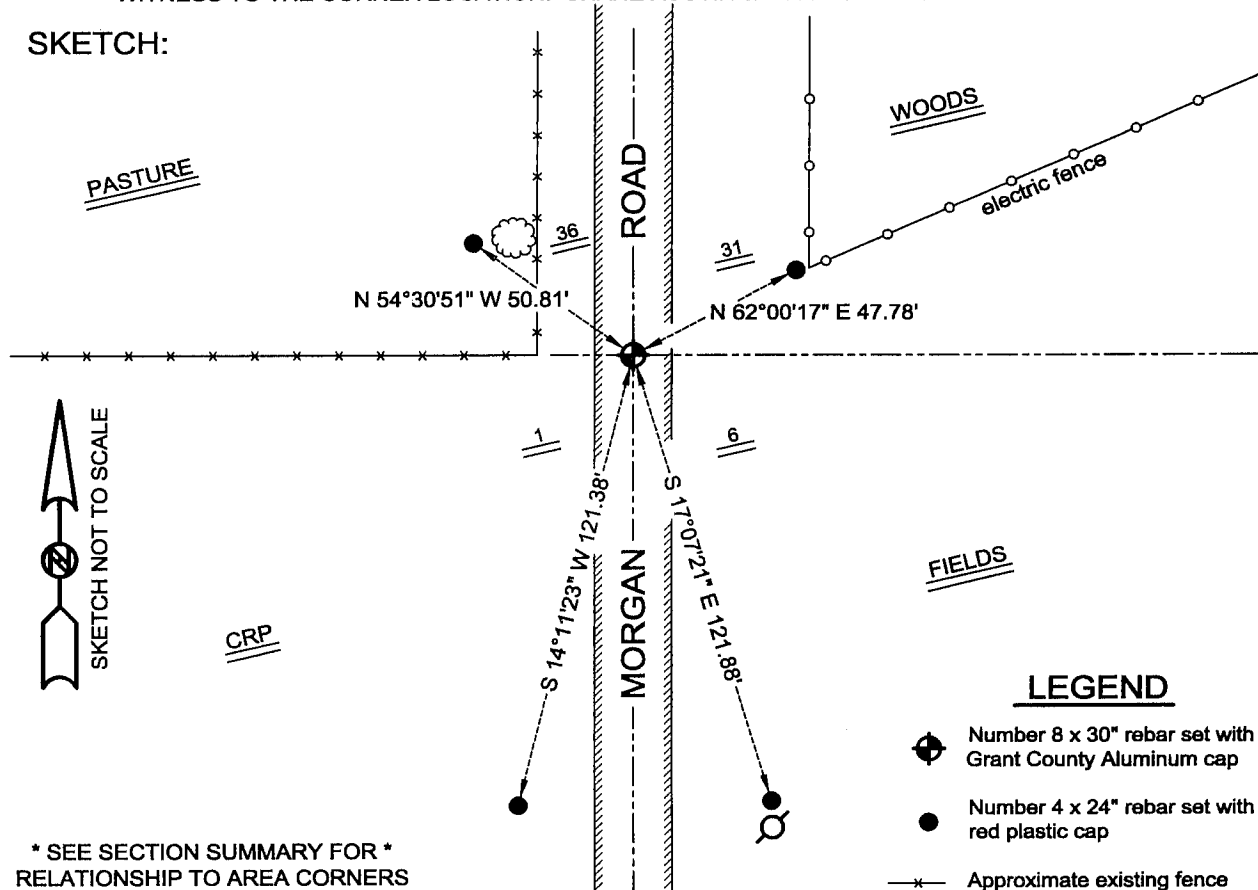
**DESCRIPTION OF CORNER EVIDENCE FOUND:**

I found an occupied location and accepted it after an EDM & GPS traverse of Section 1, T5N R6W and Section 6, T5NR5W.

**DESCRIPTION OF CORNER AND WITNESS MONUMENTS, references and accessories used to perpetuate the original or re-established location of this corner**

WITNESS TO THE CORNER LOCATION: SHANE AUSTIN & TIM FAUVER & BOBBY SEDGWICK

**SKETCH:**



**LEGEND**

- Number 8 x 30" rebar set with Grant County Aluminum cap
- Number 4 x 24" rebar set with red plastic cap
- Approximate existing fence

\* SEE SECTION SUMMARY FOR \*  
RELATIONSHIP TO AREA CORNERS

**AUSTIN ENGINEERING, LLC**  
4211 HWY 81 E, LANCASTER, WI 53813  
PHONE 608-723-6363 FAX 608-723-6702

FIELDBOOK: SDR33, 9814  
G:\T5NR6W\01  
C:\SC14\SWA\TIE\T5NR6W\01

DRAWN BY: SW AUSTIN  
APPROVED: LL AUSTIN  
CREW: BS - SB - SA - TF