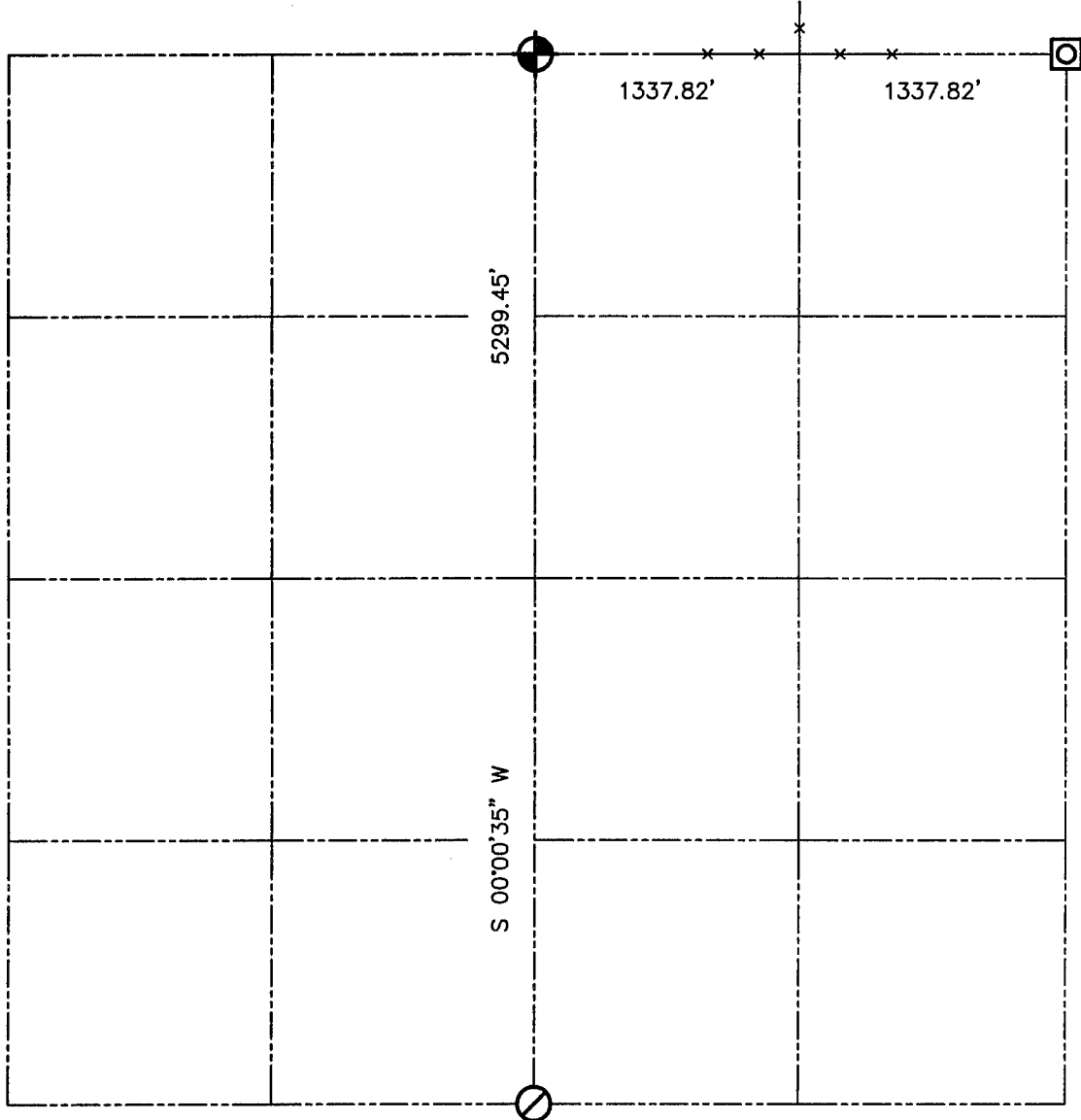





U.S. PUBLIC LAND SURVEY MONUMENT RECORD - GRANT COUNTY, WI
 Summary of Section 27, Town 5 North Range 5 West, Town of Bloomington

(ORIGINAL=40.375ch=2664.75')
 (HAYDEN=40.02ch=2641.32')
 S 89°59'59" E 2672.39'

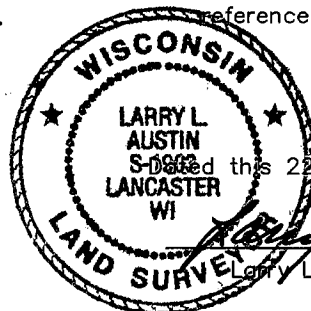


LEGEND

-  NUMBER 8 x 30" REBAR SET WITH GRANT COUNTY ALUMINUM CAP
-  P.K. NAIL (OF RECORD) FOUND
-  CORNER POST IN CONCRETE FOUND



Relationship of all section corners to other section corners shall be shown hereon by bearing and distance or grid coordinates. Bearing reference shown below.



Dated this 22nd day of June, 2001
 Larry L. Austin S-1903

Bearings referenced to the North-South Quarter line of Section 27, which is assumed to bear S 00°00'35" W.

SKETCH NOT TO SCALE