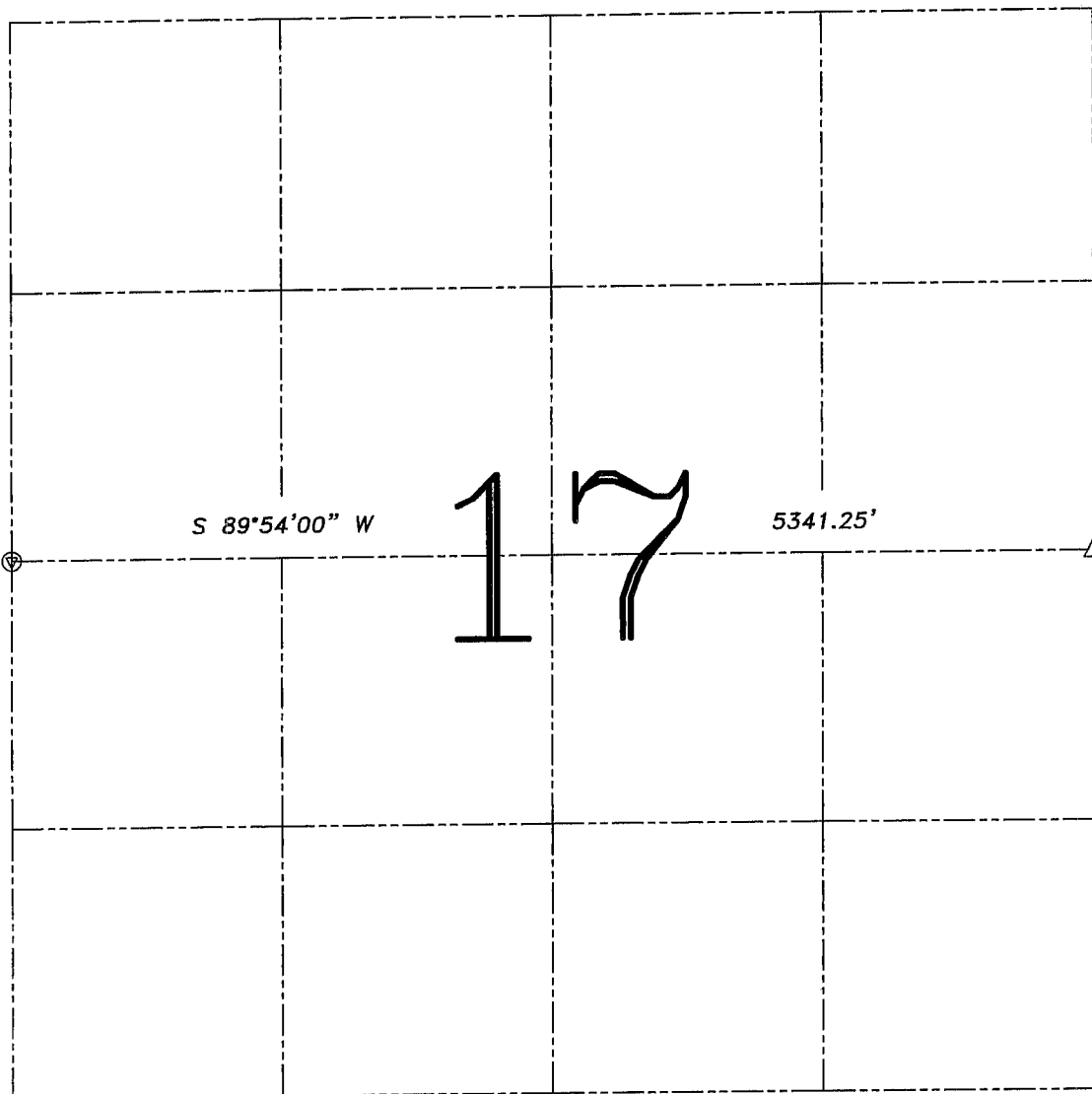


U.S. PUBLIC LAND SURVEY MONUMENT RECORD – GRANT COUNTY, WI

Summary of Section 5, Town 5 North, Range 5 West, Town of Patch Grove

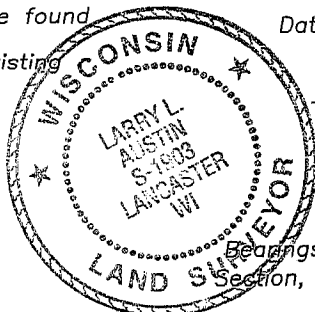


LEGEND

- △ 1" diameter iron pipe found
- ⊙ Angle iron post in concrete found
- x— Approximate location of existing fence

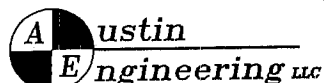
Relationship of all section corners to other section corners shall be shown hereon by bearing and distance or grid coordinates. Bearing reference shown below.

Dated this 16th day of August, 2005



Larry L. Austin
Larry L. Austin S-1903

Bearings referenced to the E-W 1/4 line of this Section, which is assumed to bear S 89°54'00" W.



4211 HWY 81 E, LANCASTER, WI 53813
PHONE 608-723-6363 FAX 608-723-6702

JOB NUMBER: 05S050
FIELDBOOK: TDSR, 2516
G:\T5NR5W\01
H:\TIE\T5NR5W\17SUM

DRAWN BY: SW AUSTIN
APPROVED: LL AUSTIN

SKETCH NOT TO SCALE