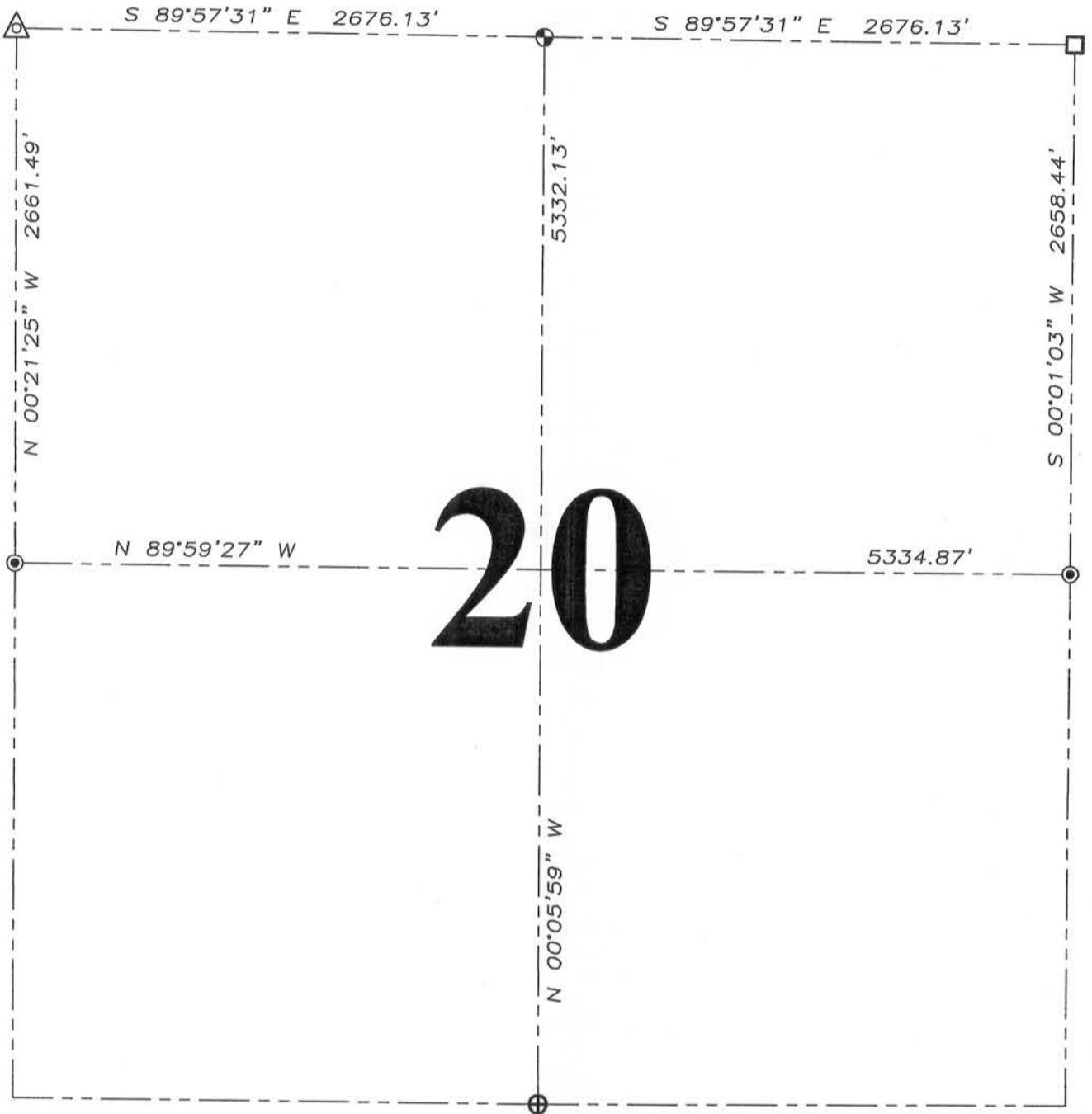
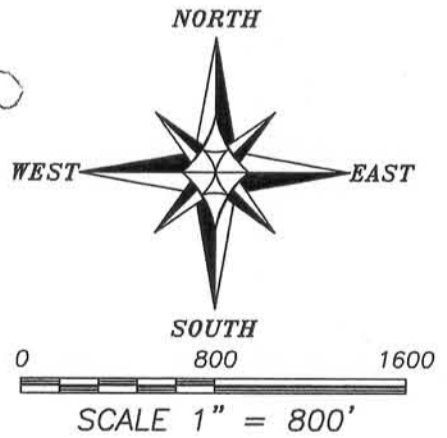


U.S. PUBLIC LAND SURVEY MONUMENT RECORD - GRANT COUNTY, WI
 Summary of Section 20, Town 5 North Range 5 West, Town of Bloomington



LEGEND

- No. 10 rebar found
- △ 1 1/2" diameter iron pipe found
- ⊕ No. 8 rebar found with Grant County Aluminum Cap
- ⊕ No. 8 x 30" rebar set with Grant County Aluminum Cap - wt=2.67#/l.f.
- ⊙ 1/2" x 4 3/4" Steel Cotton Cotton Gin Spike set



Bearings referenced to the Grant County Coordinate System (2007 adjustment) which was determined by G.P.S. observation.



Austin Engineering LLC
 austinengineeringllc.com
 4211 HWY 81 E, LANCASTER, WI 53813
 PHONE: 608-723-6363 FAX: 608-723-6702

JOB NO. 13s069
 G:\HMP\T5NR5W\20
 H:\TIE\T5NR5W\20SUM

FIELDBOOK: TDSR
 DRAWN BY: AJ AUSTIN
 CREW: SW AUSTIN

AUG 15 2013