

U.S. PUBLIC LAND SURVEY MONUMENT RECORD - GRANT COUNTY, WI

Section 32, Town 5 North Range 5 West, Town of Bloomington (a)

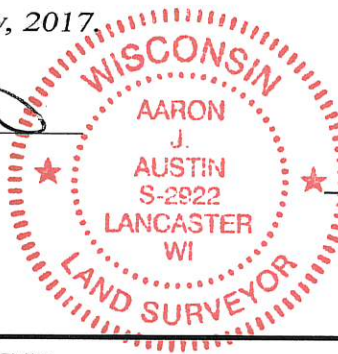
NOTE: This form is intended and designed to fulfill all requirements of the Wisconsin Administrative Code Chapter A-E 7.08, U.S. Public Land Survey Monument Record (3) (a) (b) (c) (d) (e) (f) (g) (h) (i).

CERTIFICATE: (i)

I, Aaron J. Austin, Wisconsin Professional Land Surveyor, do hereby certify that the corner location on this record was determined by me and/or under my direct supervision and that this U.S. Public Land Survey Monument Record is correct and complete to the best of my knowledge and belief.

Dated this 20th day of February, 2017.

Aaron J. Austin
 Aaron J. Austin, S-2922



Corner No. 131



⊕ = CORNER LOCATION

HISTORY OF CORNER ESTABLISHMENT:

Original corner was set in 1832 by Lucius Lyon.
 Bruce Bowden reset the corner and prepared a Survey Monument Record dated 5-31-2000.

DESCRIPTION OF CORNER EVIDENCE FOUND: (b) (f) (g) (h)

I did not find the corner or any witness corners set by Bruce Bowden. I reset the corner based upon coordinates provided on a Section Summary by Bruce dated 5-23-2000. I measured to the Southwest corner and West 1/4 corner of Section 5, T4N, R5W and reset the corner at the recorded interior angle and distance from the above mentioned coordinates. The corner location was verified with G.P.S. and E.D.M. methods

DESCRIPTION OF CORNER AND WITNESS MONUMENTS, references and accessories used to perpetuate the original or re-established location of this corner. (c) (d) (e)

Witnesses to corner location Shane Austin, Eric Macke.

SKETCH:

