

**U.S. PUBLIC LAND SURVEY MONUMENT RECORD - GRANT COUNTY, WI**

Section 28, Town 5 North Range 5 West, Town of Bloomington (a)

NOTE: This form is intended and designed to fulfill all requirements of the Wisconsin Administrative Code Chapter A-E 7.08, U.S. Public Land Survey Monument Record (3) (a) (b) (c) (d) (e) (f) (g) (h) (i).

**CERTIFICATE: (i)**

I, Aaron J. Austin, Wisconsin Professional Land Surveyor, do hereby certify that the corner location on this record was determined by me and/or under my direct supervision and that this U.S. Public Land Survey Monument Record is correct and complete to the best of my knowledge and belief.

Dated this 17th day of December, 2019.

*Aaron J. Austin*  
 Aaron J. Austin, S-2922



⊕ = CORNER LOCATION

Grant County Coordinates:  
 NAD 83 (2011)  
 Northing: 532,739.46  
 Easting: 749,003.51

HISTORY OF CORNER ESTABLISHMENT:

Original corner was set in 1832 by Robert Clark.  
 Corner location was shown on Plan and Profile of Project S 0202(4) dated 1-31-1965.  
 No other recent records found for the corner.

DESCRIPTION OF CORNER EVIDENCE FOUND: (b) (f) (g) (h)

No monument was mentioned on Project S0202(4). I set a Cotton Gin Spike at the occupied location in the centerline of County Highway "A" and a fenceline to the North. I set four new witness corners after I verified the Monument's location with G.P.S. and E.D.M. methods.

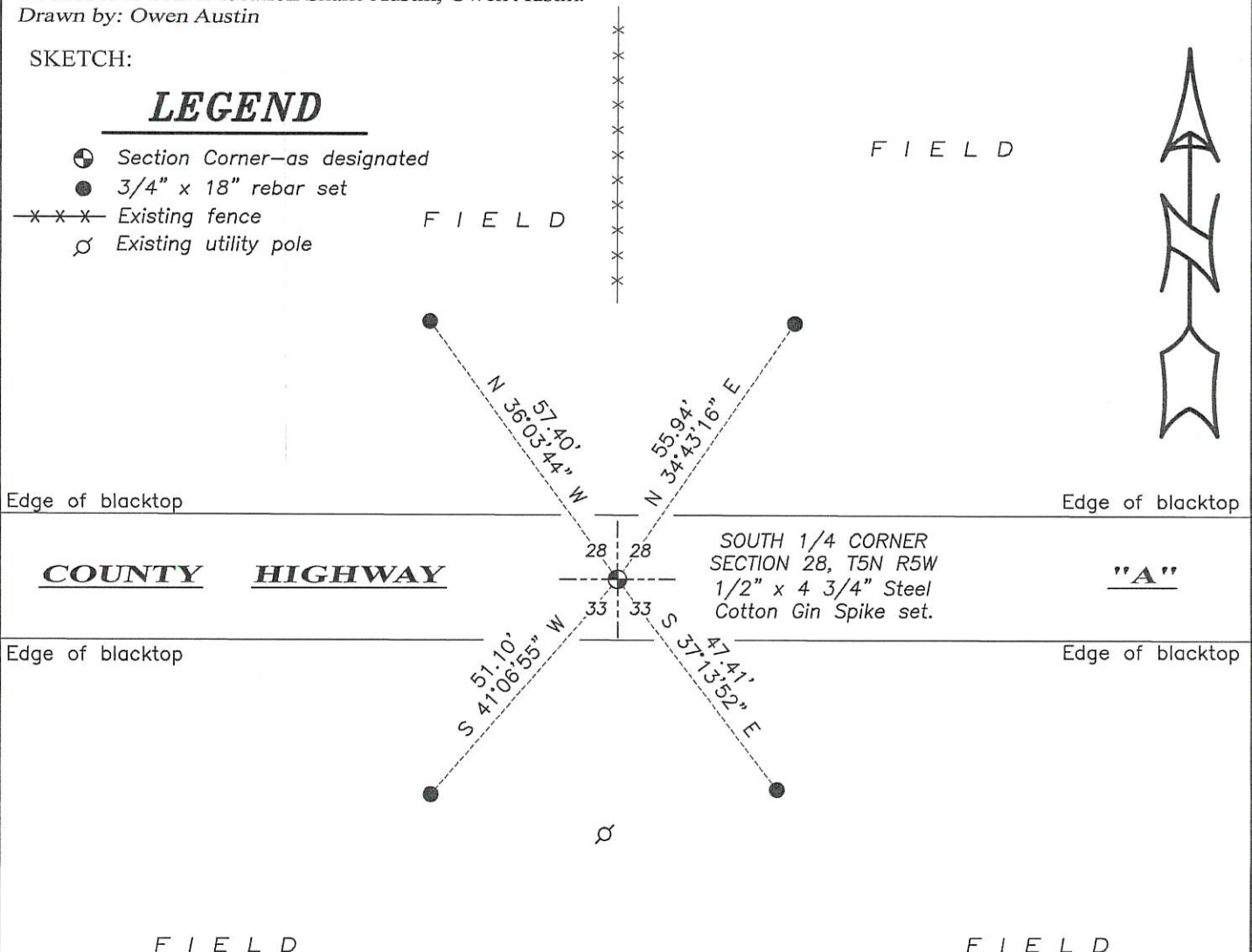
DESCRIPTION OF CORNER AND WITNESS MONUMENTS, references and accessories used to perpetuate the original or re-established location of this corner. (c) (d) (e)

Witnesses to corner location Shane Austin, Owen Austin.  
 Drawn by: Owen Austin

SKETCH:

**LEGEND**

- ⊕ Section Corner—as designated
- 3/4" x 18" rebar set
- x-x-x- Existing fence
- ⊘ Existing utility pole



Edge of blacktop

Edge of blacktop

**COUNTY HIGHWAY**

SOUTH 1/4 CORNER SECTION 28, T5N R5W  
 1/2" x 4 3/4" Steel Cotton Gin Spike set.

**"A"**

Edge of blacktop

Edge of blacktop

FIELD

FIELD

