

U.S. PUBLIC LAND SURVEY MONUMENT RECORD

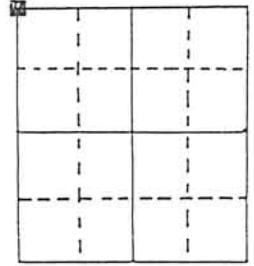
Note: This form is intended and designed to fulfill all requirements of Wisconsin Administrative Code, Chapter A-E 5.02, U.S. Public Land Survey Monument Record (3) (a) (b) (c) (d) (e) (f) (g) (h) (i). An additional sheet may be added if necessary to conform with said requirements.

(a) Corner location: Township 5 North

Range 5 East/West

Town/City/Village Bloomington

County Grant



Section 34

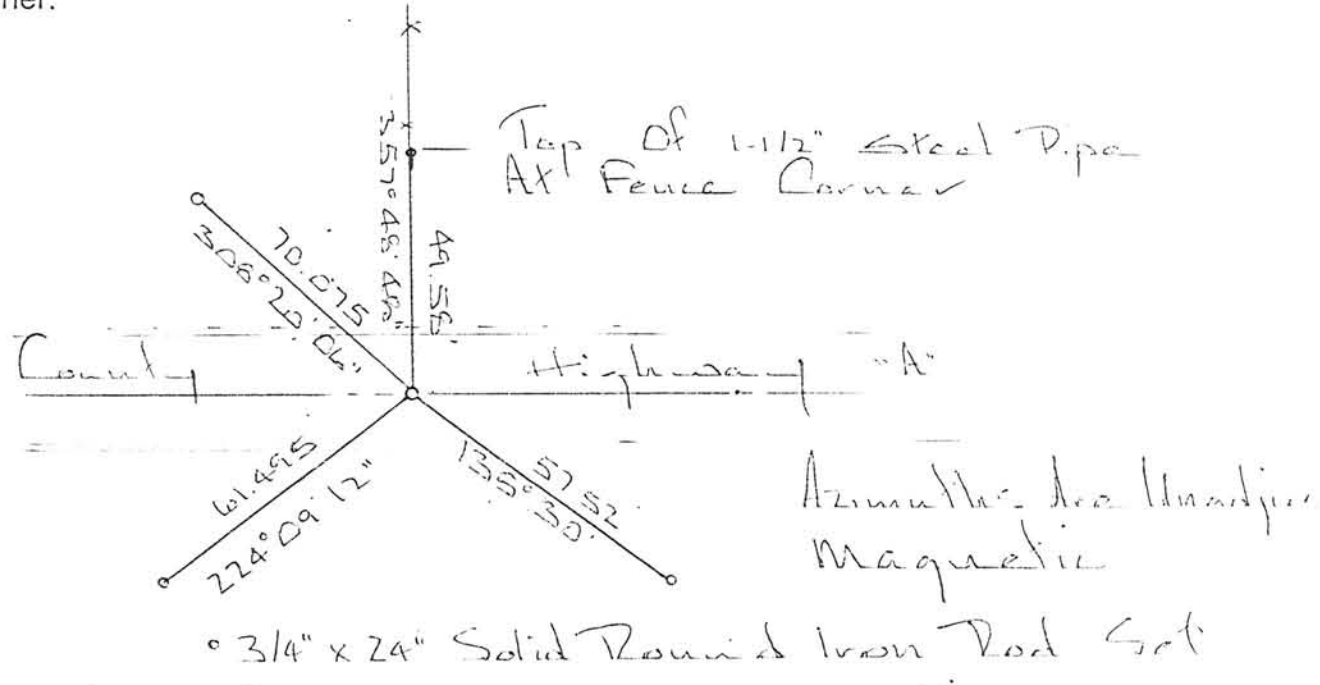
(b) (f) (g) (h) Description of monument found at this corner and if it was accepted, state all evidence (material, testimonial, occupational, plats, records, other monuments) used as a basis for accepting. If not accepted or if nothing was found, state evidence used as basis for establishing location. If reestablished through lost corner proportionate methods, indicate all monuments, distances and directions used to establish.

Found P.K. Nail in C of Road And in Line with A Fence North. Corner in Road Cut. Set A 3/4" x 24" Solid Round Iron Rod.

Records

- 1) Volume C-125 - John Clark Sept 1859 (Shows Corner And Distance East 710th. 38 - Meas 71500)
- 2) 121st Plan For County Highway "A"
- 3) Schaefer Set P.K. Nail

(c) (d) (e) Plan view of corner with ties to at least 4 witness monuments. If in disagreement with previously established corner, show the distances between the two corners and also indicate the ties to the disputed corner.



(i) I, Richard Marks
 (type or print name) certify that the corner location on this record was determined by me or under my direction and control and that this U.S. Public Land Survey Monument Record is correct and complete to the best of my knowledge and belief.

Signature [Signature] Date 8/28/82



Affix seal here