

U.S. PUBLIC LAND SURVEY MONUMENT RECORD - GRANT COUNTY, WI

Section 35, Town 5 North Range 5 West, Town of Bloomington (a)

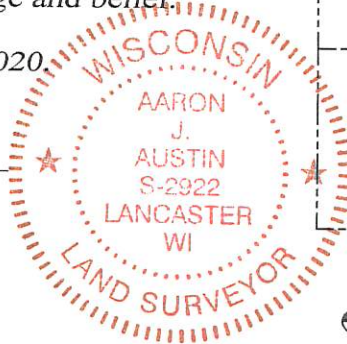
NOTE: This form is intended and designed to fulfill all requirements of the Wisconsin Administrative Code Chapter A-E 7.08, U.S. Public Land Survey Monument Record (3) (a) (b) (c) (d) (e) (f) (g) (h) (i).

CERTIFICATE: (i)

I, Aaron J. Austin, Wisconsin Professional Land Surveyor, do hereby certify that the corner location on this record was determined by me and/or under my direct supervision and that this U.S. Public Land Survey Monument Record is correct and complete to the best of my knowledge and belief.

Dated this 29th day of September, 2020.

Aaron J. Austin
Aaron J. Austin, S-2922



⊕ = CORNER LOCATION

Grant County Coordinates:
NAD 83 (2011)
Northing: 532,738.00
Easting: 756,985.22

HISTORY OF CORNER ESTABLISHMENT:

Original corner was set in 1832 by Robert Clark.
Timothy Moore set a Aluminum Monument at the Corner and prepared a Survey Monument Record dated 2/19/1988.

DESCRIPTION OF CORNER EVIDENCE FOUND: (b) (f) (g) (h)

I found the witness corners Moore set. I set a Cotton Gin Spike from the existing witness corners after I verified the Monument's location with G.P.S. and E.D.M. methods.

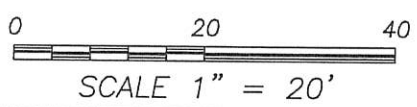
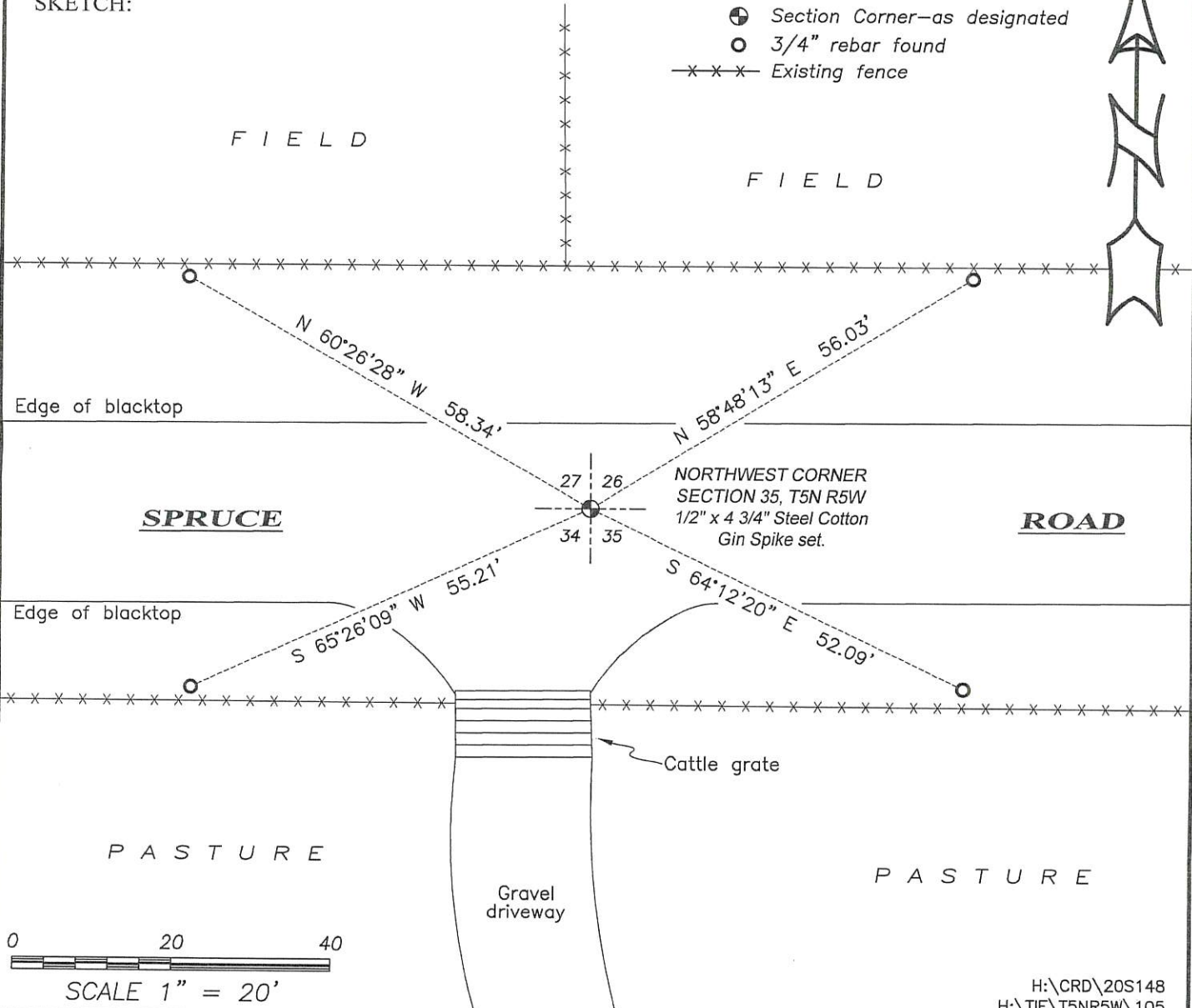
DESCRIPTION OF CORNER AND WITNESS MONUMENTS, references and accessories used to perpetuate the original or re-established location of this corner. (c) (d) (e)

Witnesses to corner location Shane Austin, Owen Austin.
Drawn by Owen Austin

LEGEND

- ⊕ Section Corner—as designated
- 3/4" rebar found
- x-x-x- Existing fence

SKETCH:

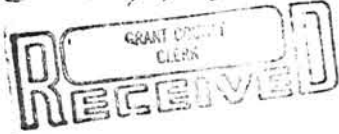


U. S. PUBLIC LAND SURVEY MONUMENT RECORD

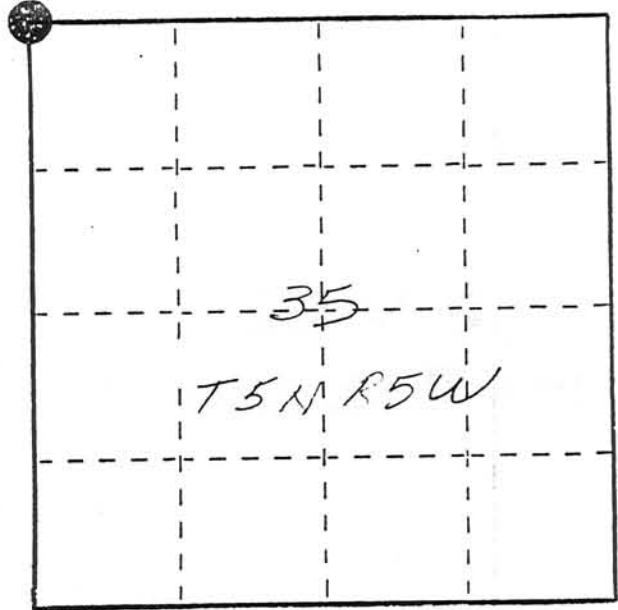
INSTRUCTIONS: This record shall show the location of the corner and shall include all of the following nine elements (a through i).

- (a) Identify the corner by reference to the U.S. public land survey system.
 ● = Corner monument restored.

NW corner Section 35
 T5N R5W of the
 4th P.M.
 Town of Bloomington
 Grant County, Wisconsin



MAR 2 1988



- (b) Describe any record evidence, monument evidence, occupational evidence, testimonial evidence or any other material evidence you considered, and whether the monument was found or placed.

Monument was set at existing occupation lines.
 This location agrees with call to creek to the east
 and distance and direction to an old Oak agrees
 with original bearing tree tie.

- (c) In the plan view drawing below, provide reference ties to at least 4 witness monuments, or, if the location is within a municipality, to at least 2 witness monuments. (Witness monuments shall be made of concrete, natural stone, iron or other equally durable material, ~~except wood~~.) Describe witness monuments.

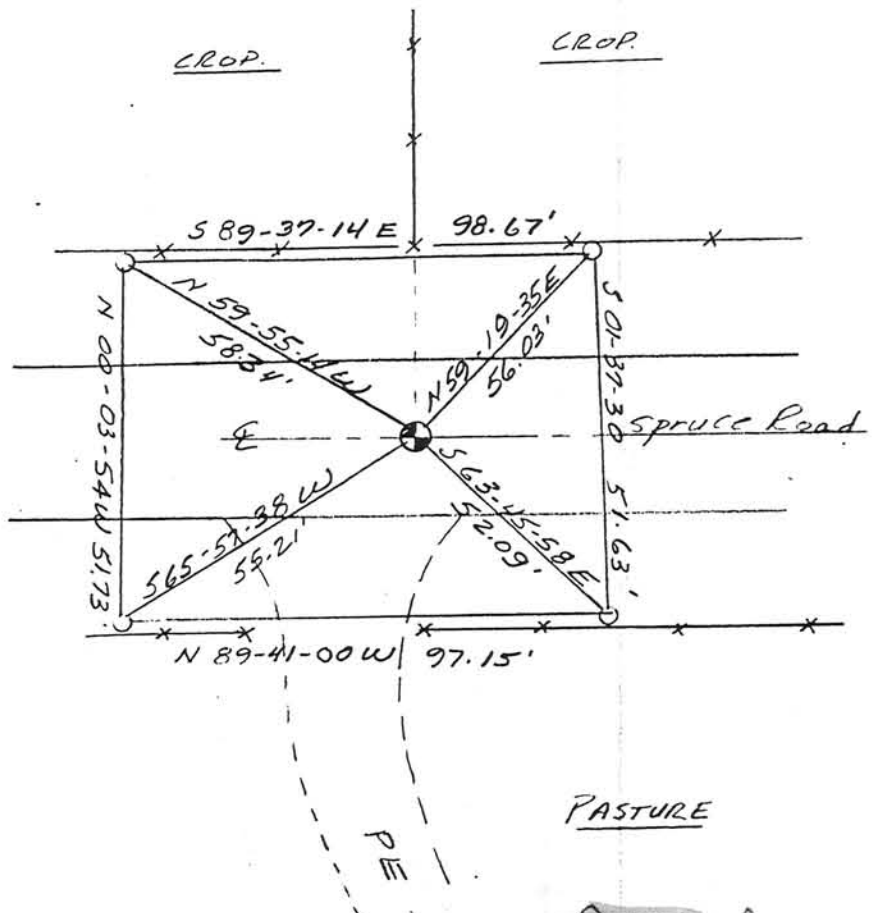
- (d) Show a plan view drawing depicting the relevant monuments and reference ties which is sufficient in detail to enable accurate relocation of the corner monument if the corner monument is disturbed. Indicate north.



No Scale
 Bearings - Wis. Grid

● - Berntsen A-1 mon.
 set 6" below subgrade

○ - Ref. mon - 3/4" x 24"
 rebar w/ cap.



P.105 A

