

U.S. PUBLIC LAND SURVEY MONUMENT RECORD - GRANT COUNTY, WI

Section 26, Town 5 North Range 5 West, Town of Bloomington

CERTIFICATE:

I, Aaron J. Austin, do hereby certify that the corner location on this record was determined by me and/or under my direct supervision and that this U.S. Public Land Survey Monument Record is correct and complete to the best of my knowledge and belief.

Dated this 20 th day of Dec., 2012

Aaron J. Austin
 Aaron J. Austin, S-2922



● = CORNER LOCATION

HISTORY OF CORNER ESTABLISHMENT:

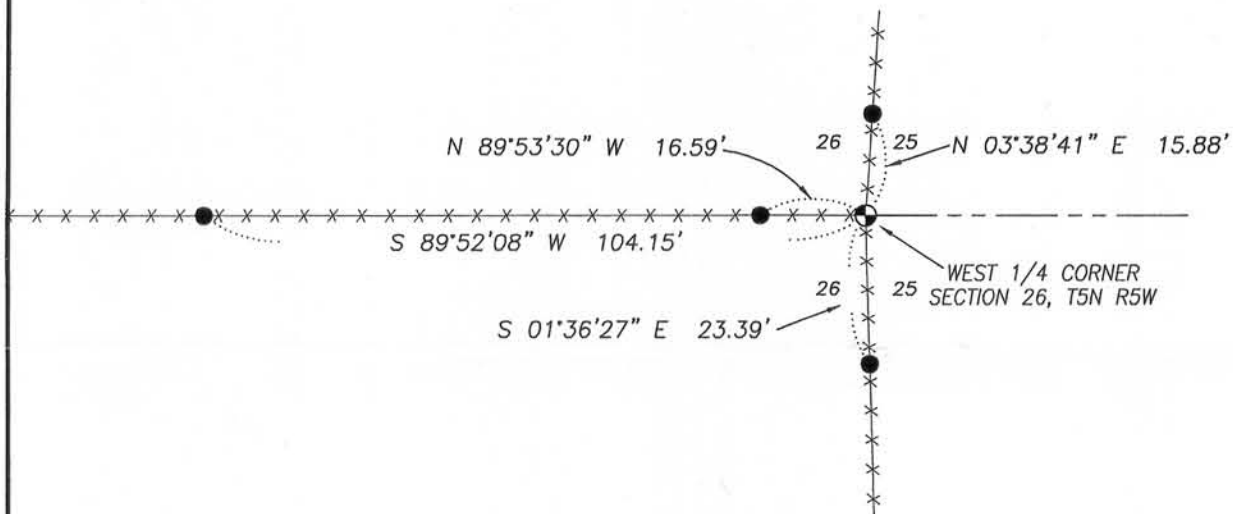
Corner originally set by Robert Clark Parke in 1832. David Krohn found and accepted a Steel Angle Bar as corner post on a survey performed on 6-29-1976 filed in Book G, Page 265. No other record was found for this corner.

DESCRIPTION OF CORNER EVIDENCE FOUND:

No evidence of original corner found. An existing Angle Iron post set in concrete was found and accepted at an occupational fence corner. I believe this is the same corner referred to on above mentioned Krohn Survey. Corner was verified by G.P.S. methods.

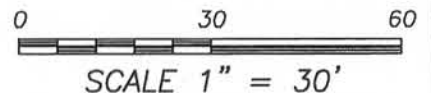
DESCRIPTION OF CORNER AND WITNESS MONUMENTS, references and accessories used to perpetuate the original or re-established location of this corner. Witnesses to corner location Bobby Sedgwick and Shelby Blindert.

SKETCH:



LEGEND

- Angle Iron post in concrete
- Number 4 x 24" Rebar set with red plastic "TIE" cap
- x-x- Approximate existing fence



Austin Engineering LLC
 austinengineeringllc.com

4211 HWY 81 E, LANCASTER, WI 53813
 PHONE: 608-723-6363 FAX: 608-723-6702

JOB NO: 12s231
 G:\T5NR5W\25
 H:\TIE\T5NR5W\98

FIELDBOOK: TDSR
 DRAWN BY: AJ AUSTIN
 CREW: BS-SB

RECEIVED
 JAN 03 2013