

# U.S. PUBLIC LAND SURVEY MONUMENT RECORD - GRANT COUNTY, WI

Section 19, Town 5 North Range 5 West, Town of Bloomington (a)

NOTE: This form is intended and designed to fulfill all requirements of the Wisconsin Administrative Code Chapter A-E 7.08, U.S. Public Land Survey Monument Record (3) (a) (b) (c) (d) (e) (f) (g) (h) (i).

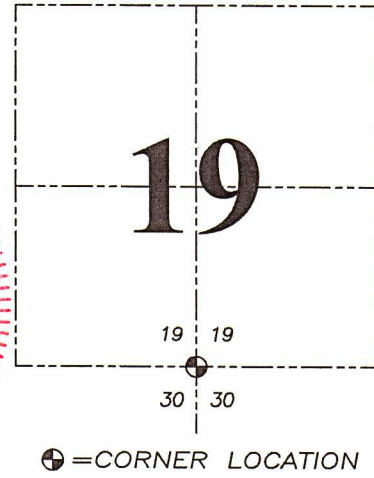
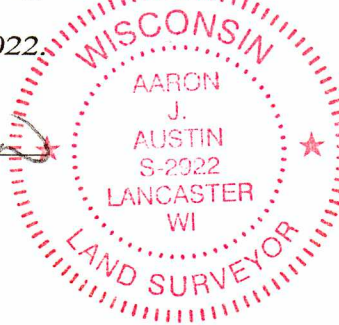
**CERTIFICATE: (i)**

I, Aaron J. Austin, Wisconsin Professional Land Surveyor, do hereby certify that the corner location on this record was determined by me and/or under my direct supervision and that this U.S. Public Land Survey Monument Record is correct and complete to the best of my knowledge and belief.

Dated this 10th day of January, 2022.



Aaron J. Austin, S-2922



Grant County Coordinates:  
NAD 83 (2011)  
Northing: 538,047.54  
Easting: 738,337.96

HISTORY OF CORNER ESTABLISHMENT:

Original corner was set in 1832 by Robert Clark.  
Richard Marks set a 3/4" Rebar and prepared a Survey Monument Record dated 6/12/1989.

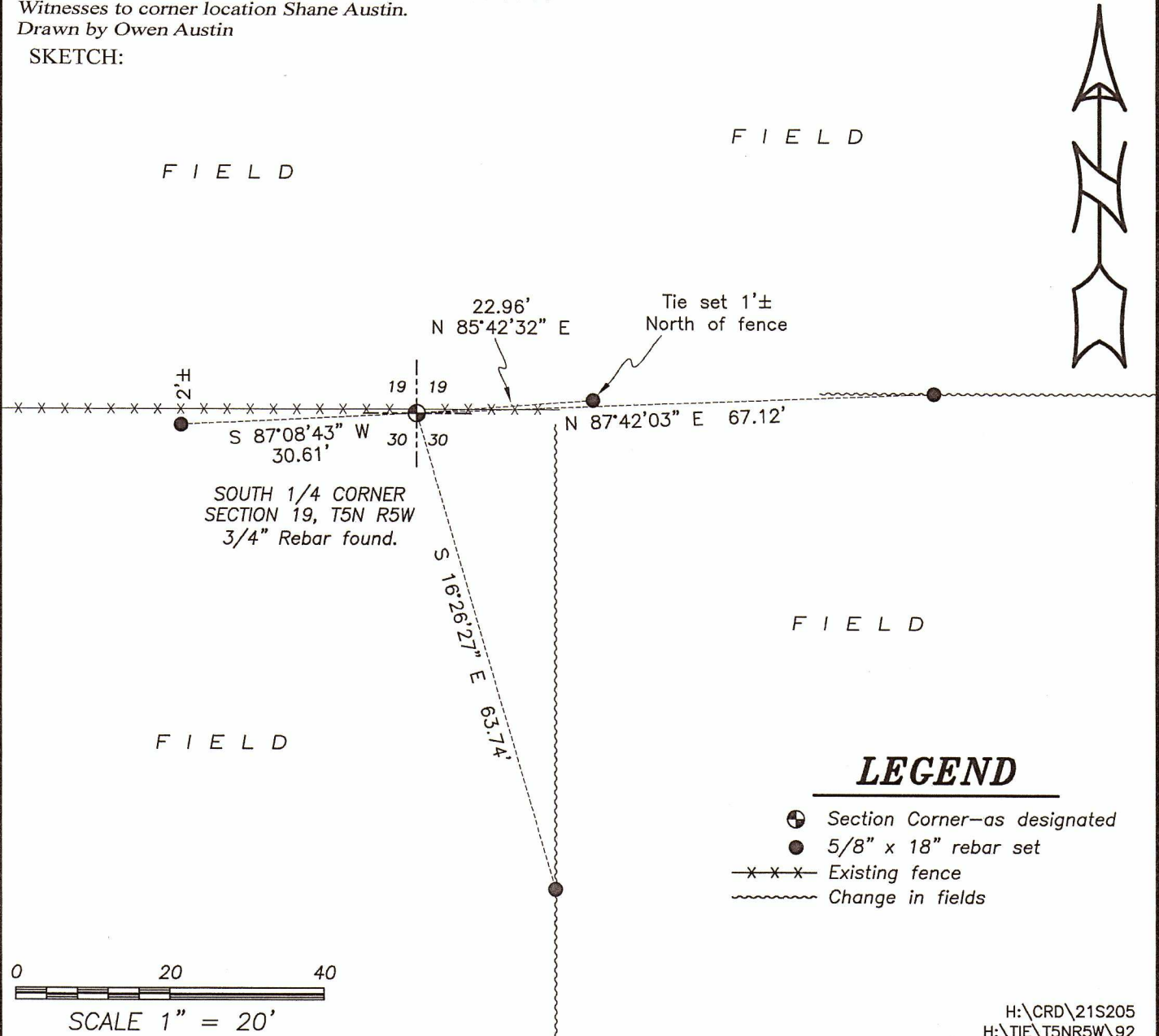
DESCRIPTION OF CORNER EVIDENCE FOUND: (b) (f) (g) (h)

I found the 3/4" Rebar Marks set. I set four witness corners after I verified the Monument's location with G.P.S. and E.D.M. methods.



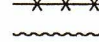

DESCRIPTION OF CORNER AND WITNESS MONUMENTS, references and accessories used to perpetuate the original or re-established location of this corner. (c) (d) (e)

Witnesses to corner location Shane Austin.  
Drawn by Owen Austin

SKETCH:



### LEGEND

-  Section Corner—as designated
-  5/8" x 18" rebar set
-  Existing fence
-  Change in fields

0 20 40  
SCALE 1" = 20'

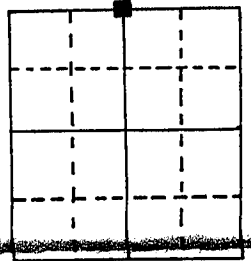
# U.S. PUBLIC LAND SURVEY MONUMENT RECORD

Note: This form is intended and designed to fulfill all requirements of Wisconsin Administrative Code, Chapter A-E 5.02, U.S. Public Land Survey Monument Record (3) (a) (b) (c) (d) (e) (f) (g) (h) (i). An additional sheet may be added if necessary to conform with said requirements.

**RECEIVED**  
GRANT COUNTY

(a) Corner location: Township 5 North  
 Range 5 East/West  
 Town/City/Village Bloomington  
 County Grant

JUN 14 1989

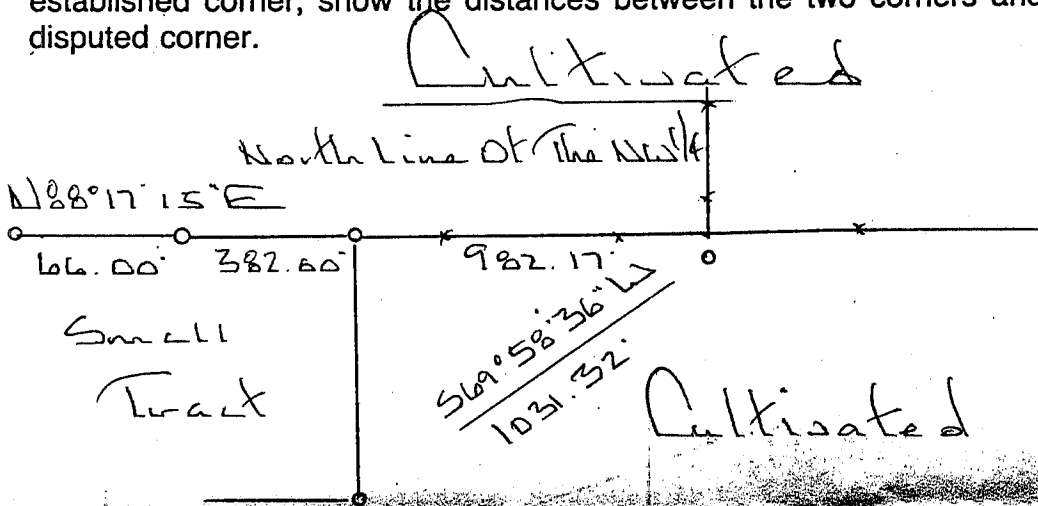


Section 30.

(b) (f) (g) (h) Description of monument found at this corner and if it was accepted, state all evidence (material, testimonial, occupational, plats, records, other monuments) used as a basis for accepting. If not accepted or if nothing was found, state evidence used as basis for establishing location. If reestablished through lost corner proportionate methods, indicate all monuments, distances and directions used to establish.

Schmit Shaws 2" Iron Shaft At  
 Corner On Survey Dated 10/20/78  
 I could not find shaft. I set a  
 3/4" x 24" Solid Round Iron Rod At A  
 Corner Corner N-E-W

(c) (d) (e) Plan view of corner with ties to at least 4 witness monuments. If in disagreement with previously established corner, show the distances between the two corners and also indicate the ties to the disputed corner.

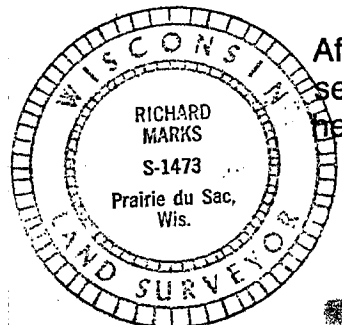


Corner and Witness Corners are 3/4" x 24"  
 Solid Round Iron Rods Set  
 Bearings are assumed - referenced to the North  
 Line of the Walk  
 (i) Richard Marks

(type or print name) certify that the corner location on this record was determined by me or under my direction and control and that this U.S. Public Land Survey Monument Record is correct and complete to the best of my knowledge and belief.

Richard Marks  
 Signature

6/12/89  
 Date



Affix seal here

P. 92A