

Preparer's Name: Kenneth L. Buesing Address: 1212 Locust St. Dubuque, IA Telephone: (563) 556-4389

SLSI 9-94

UNITED STATES PUBLIC LAND SURVEY MONUMENT RECORD OF

Land Survey Monuments situated in Section 28, Township 5N, Range 5W, of the Fifth Principal Meridian, GRANT County, Wisconsin, Previously recorded in NONE in County Recorder's Office.

(Show reason for preparing this certificate, the evidence and detailed procedures used in establishing the corner positions and monumentation found or placed.)

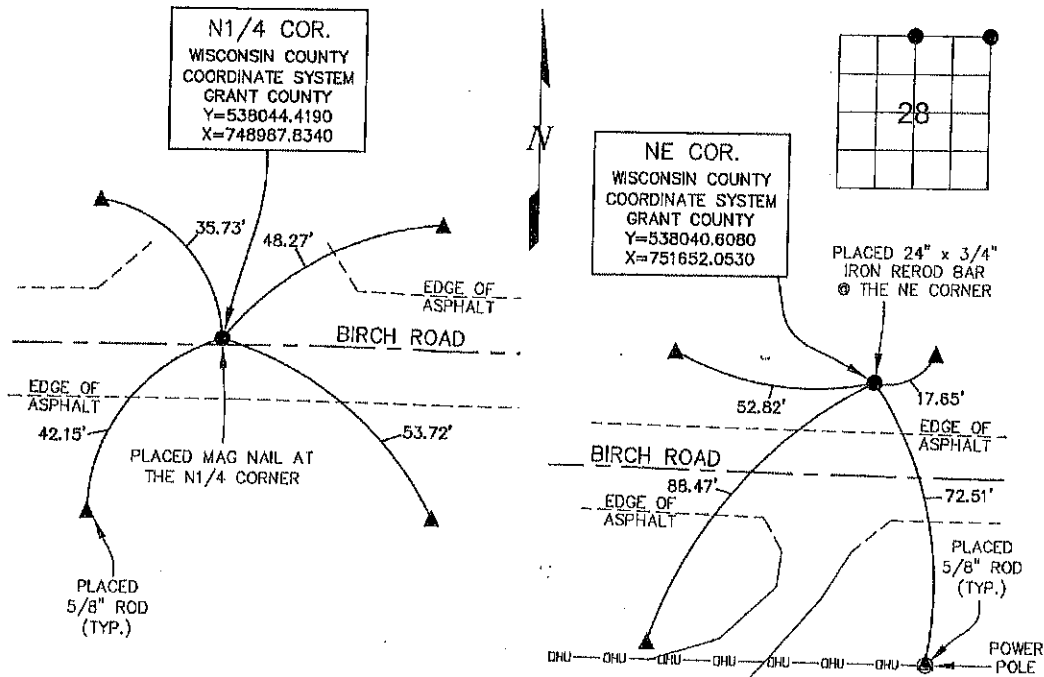
Monument Description and Remarks: PLACED MAG NAIL @ THE N1/4 CORNER, FLUSH WITH ASPHALT ROAD. REESTABLISHED BY USING MID POINT BETWEEN N1/4 OF SECTION 29 & N1/4 OF SECTION 27.

PLACED 24" x 3/4" IRON REROD BAR @ THE NE CORNER. FLUSH WITH GROUND.

REESTABLISHED BY USING MID POINT BETWEEN N1/4 OF SECTION 28 & N1/4 OF SECTION 27.

PLAN - VIEW

(Show a minimum of three reference ties to durable physical objects, relevant monuments and physical conditions that will enable recovery of the corner.)



I HEREBY CERTIFY THAT THIS LAND SURVEYING DOCUMENT WAS PREPARED AND THE RELATED SURVEY WORK WAS PERFORMED BY ME OR UNDER MY DIRECT PERSONAL SUPERVISION AND THAT I AM A DULY LICENSED LAND SURVEYOR UNDER THE LAWS OF THE STATE OF WISCONSIN.

Kenneth L. Buesing signature and date 14 APRIL 2018

KENNETH L. BUESING (DATE) S-2217 MY LICENSE RENEWAL DATE IS JANUARY 31, 2018

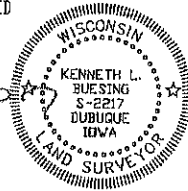


Table with 4 columns: Corners, List Corners to be indexed, Section, Twp, Range. Rows for N1/4 COR. and NE COR.

Footer section containing BUESING ASSOCIATES INC. logo, COUNTY: GRANT, TOWNSHIP: BLOMMINGTON, and drawing information.