

U.S. PUBLIC LAND SURVEY MONUMENT RECORD - GRANT COUNTY, WI

Section 23, Town 5 North Range 5 West, Town of Bloomington (a)

NOTE: This form is intended and designed to fulfill all requirements of the Wisconsin Administrative Code Chapter A-E 7.08, U.S. Public Land Survey Monument Record (3) (a) (b) (c) (d) (e) (f) (g) (h) (i).

CERTIFICATE: (i)

I, Aaron J. Austin, Wisconsin Professional Land Surveyor, do hereby certify that the corner location on this record was determined by me and/or under my direct supervision and that this U.S. Public Land Survey Monument Record is correct and complete to the best of my knowledge and belief.

Dated this 22nd day of May, 2023.

Aaron J. Austin
 Aaron J. Austin, S-2922



Grant County Coordinates:
 NAD 83 (2011)
 Northing: 538,026.03
 Easting: 759,655.66

HISTORY OF CORNER ESTABLISHMENT:

Original corner was set in 1832 by Robert Clark.
 Richard Talarczyk set a Cast Aluminum Monument and prepared a Survey Monument Record dated 12-19-1981.

DESCRIPTION OF CORNER EVIDENCE FOUND: (b) (f) (g) (h)

I found the Cast Aluminum Monument and three witness corners Talarczyk set. I set one additional witness corner after I verified the Monument's location with G.P.S. and E.D.M. methods.

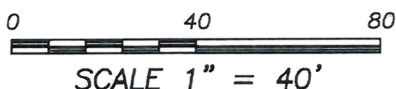
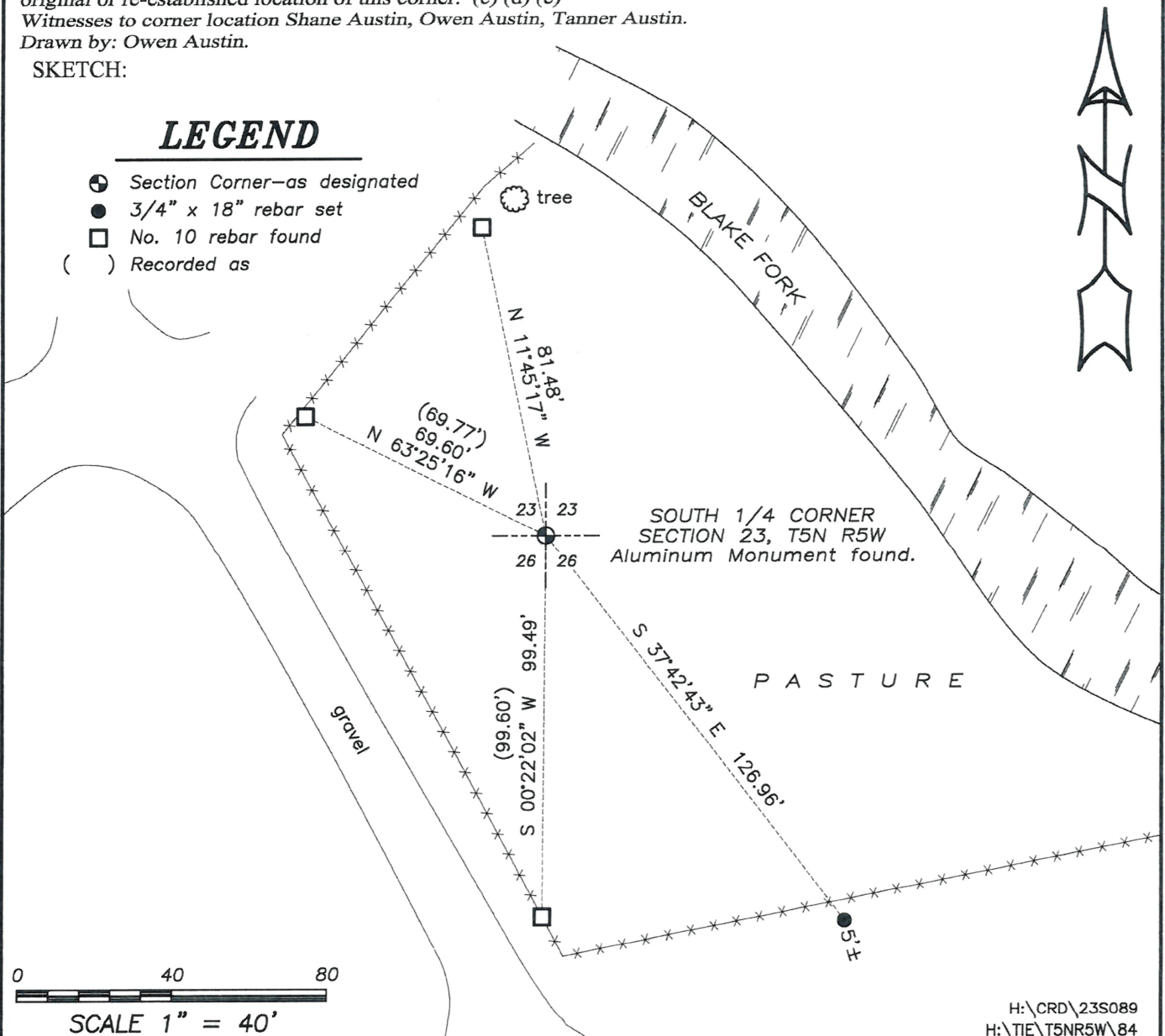
DESCRIPTION OF CORNER AND WITNESS MONUMENTS, references and accessories used to perpetuate the original or re-established location of this corner. (c) (d) (e)

Witnesses to corner location Shane Austin, Owen Austin, Tanner Austin.
 Drawn by: Owen Austin.

SKETCH:

LEGEND

- ⊕ Section Corner—as designated
- 3/4" x 18" rebar set
- No. 10 rebar found
- () Recorded as



RECORD OF U.S. PUBLIC LAND SURVEY CONTROL STATION

Bloomington

QUARTER SECTION CORNER $\frac{23}{26} | \frac{23}{26}$ TOWNSHIP 5 N, RANGE EW, GRANT COUNTY, WISCONSIN.

GEODETTIC SURVEY BY: _____

STATE PLANE COORDINATES OF: _____
 NORTH _____
 EAST _____

ELEVATION OF STATION: _____ THETA ANGLE: _____

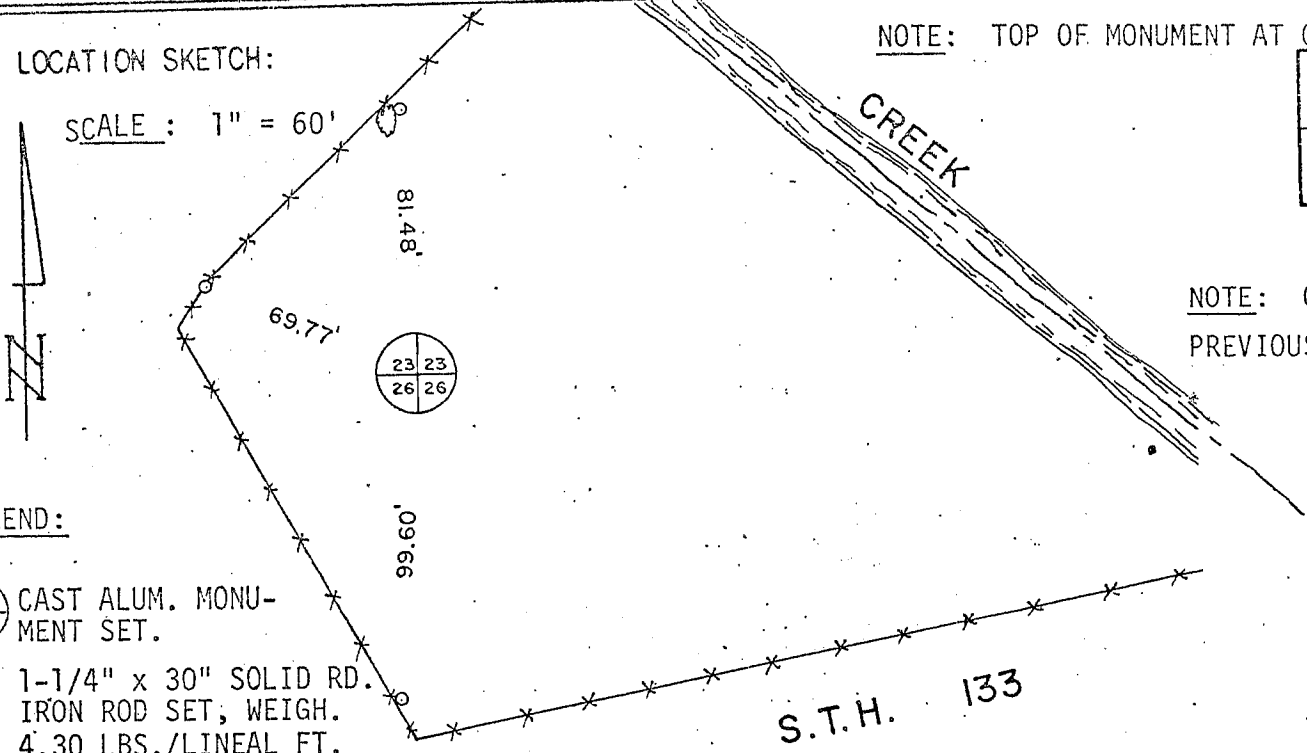
HORIZONTAL DATUM: WISCONSIN STATE PLANE COORDINATE SYSTEM, SOUTH ZONE

VERTICAL DATUM: MEAN SEA LEVEL, 1929 ADJUSTMENT

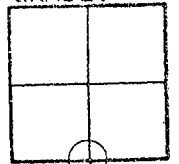
HORIZONTAL & VERTICAL CONTROL ACCURACY: SECOND ORDER

LOCATION SKETCH:

SCALE : 1" = 60'



NOTE: TOP OF MONUMENT AT GRADE.



SEC. 23

NOTE: CORNER SET FROM PREVIOUS SURVEY TIES.

LEGEND:

CAST ALUM. MONUMENT SET.

1-1/4" x 30" SOLID RD. IRON ROD SET, WEIGH. 4.30 LBS./LINEAL FT.

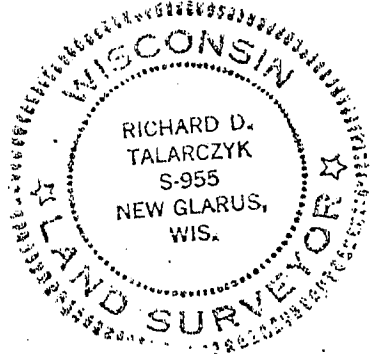
SURVEYOR'S AFFIDAVIT:

STATE OF WISCONSIN)
 GREEN COUNTY) SS

I HEREBY CERTIFY THAT I, RICHARD D. TALARCZYK, HAVE COMPLIED WITH THE WISCONSIN STATUTES, STATUTES OF THE UNITED STATES, AND THE RULES AND REGULATIONS OF THE SECRETARY OF THE INTERIOR IN THE LOCATION OF THE CORNER SHOWN ABOVE.

DATE OF SURVEY: 10-14-81 to 12-19-81.

Richard D. Talarczyk
 Richard D. Talarczyk



DEC 30 1981

P. 84