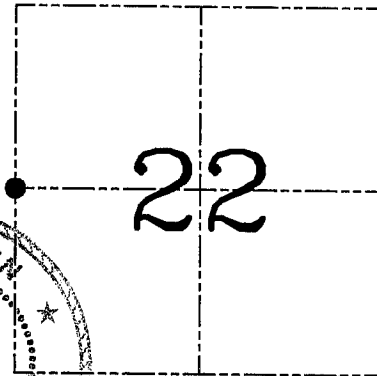
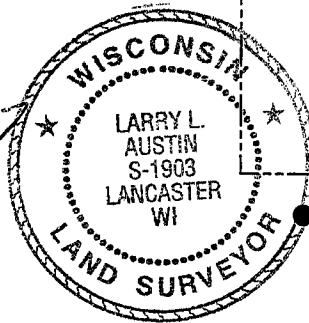


**U.S. PUBLIC LAND SURVEY MONUMENT RECORD – GRANT COUNTY, WI**  
**Section 22, Town 5 North Range 5 West, Town of Bloomington**

CERTIFICATE

I, Larry L. Austin, do hereby certify that the corner location on this record was determined by me and/or under my direct supervision and that this U.S. public land survey monument record is correct and complete to the best of my knowledge and belief.

*Larry L. Austin* 2.23.07  
 Larry L. Austin, S-1903 date



HISTORY OF CORNER ESTABLISHMENT

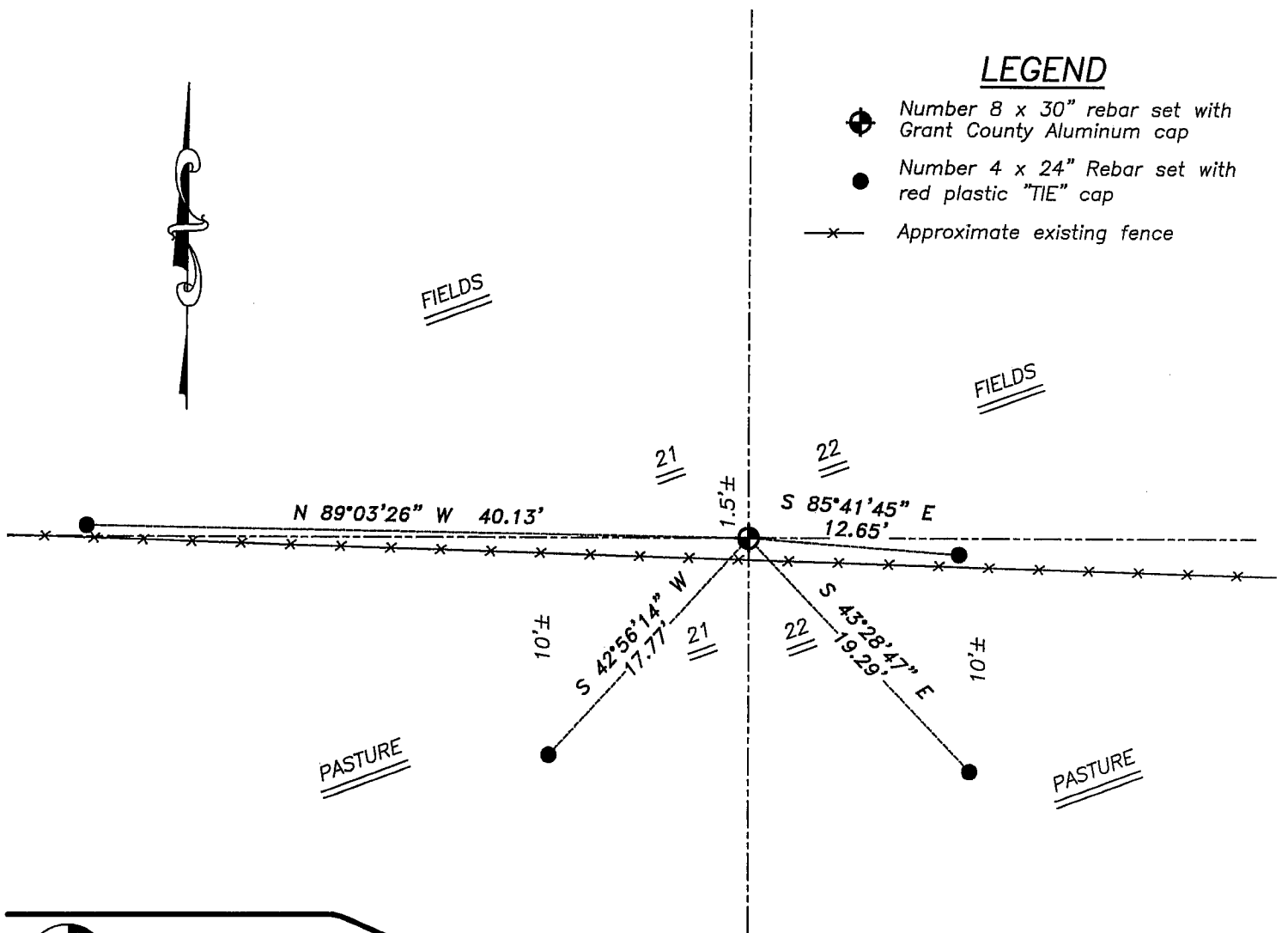
Corner was originally set in 1833 by Harvey Parke. In 1855 John Clark performed a section split and set the corners of the Southwest 1/4 of the Northwest 1/4. No other record of the corner was found.

DESCRIPTION OF CORNER EVIDENCE FOUND

I found no evidence of the original corner. I found existing fence corners at the corners of the SW 1/4 of the NW 1/4. I used these and the occupied center to reestablish the West 1/4. Verified this location using EDM & GPS methods.

DESCRIPTION OF CORNER AND WITNESS MONUMENTS, references and accessories used to perpetuate the original or re-established location of this corner. Witnesses to corner location Bobby Sedgwick & Brad Digman & Shelby Blindert

**SKETCH:**



LEGEND

- Number 8 x 30" rebar set with Grant County Aluminum cap
- Number 4 x 24" Rebar set with red plastic "TIE" cap
- Approximate existing fence



**Austin Engineering LLC**

4211 HWY 81 E, LANCASTER, WI 53813  
 PHONE 608-723-6363 FAX 608-723-6702

JOB NUMBER 06S321  
 FIELDBOOK: TDSR, 2608  
 G:\T5NR5W\25  
 H:\TIE\T5NR5W\77

DRAWN BY: SW AUSTIN  
 APPROVED: LL AUSTIN

SKETCH NOT TO SCALE