

55076

U.S. PUBLIC LAND SURVEY MONUMENT RECORD - GRANT COUNTY, WI

Section 21, Town 5 North Range 5 West, Town of Bloomington (a)

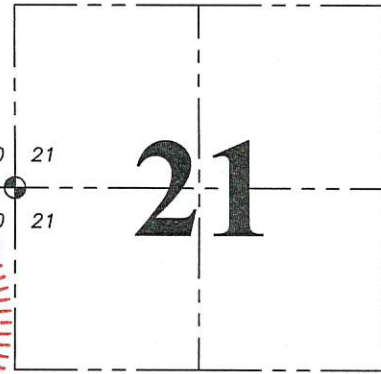
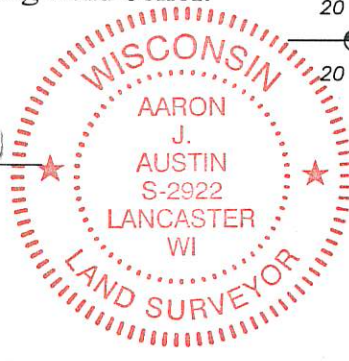
NOTE: This form is intended and designed to fulfill all requirements of the Wisconsin Administrative Code Chapter A-E 7.08, U.S. Public Land Survey Monument Record (3) (a) (b) (c) (d) (e) (f) (g) (h) (i).

CERTIFICATE: (i)

I, Aaron J. Austin, Wisconsin Professional Land Surveyor, do hereby certify that the corner location on this record was determined by me and/or under my direct supervision and that this U.S. Public Land Survey Monument Record is correct and complete to the best of my knowledge and belief.

Dated this 5th day of May, 2019.

Aaron J. Austin
Aaron J. Austin, S-2922



⊕ = CORNER LOCATION

Grant County Coordinates:
NAD 83 (2011)
Northing: 540,723.94
Easting: 746,325.39

HISTORY OF CORNER ESTABLISHMENT:

Original corner was set in 1832 by Robert Clark.
Aaron Austin set a 1/2" x 4 3/4" Cotton Gin Spike and prepared a Survey Monument Record dated 8/13/2013.

DESCRIPTION OF CORNER EVIDENCE FOUND: (b) (f) (g) (h)

The monument could not be found. I set a 1/2" x 4 3/4" Cotton Gin Spike from two found witness corners. I set two additional witness corners after I verified the Section Corner's location with G.P.S. and E.D.M. methods

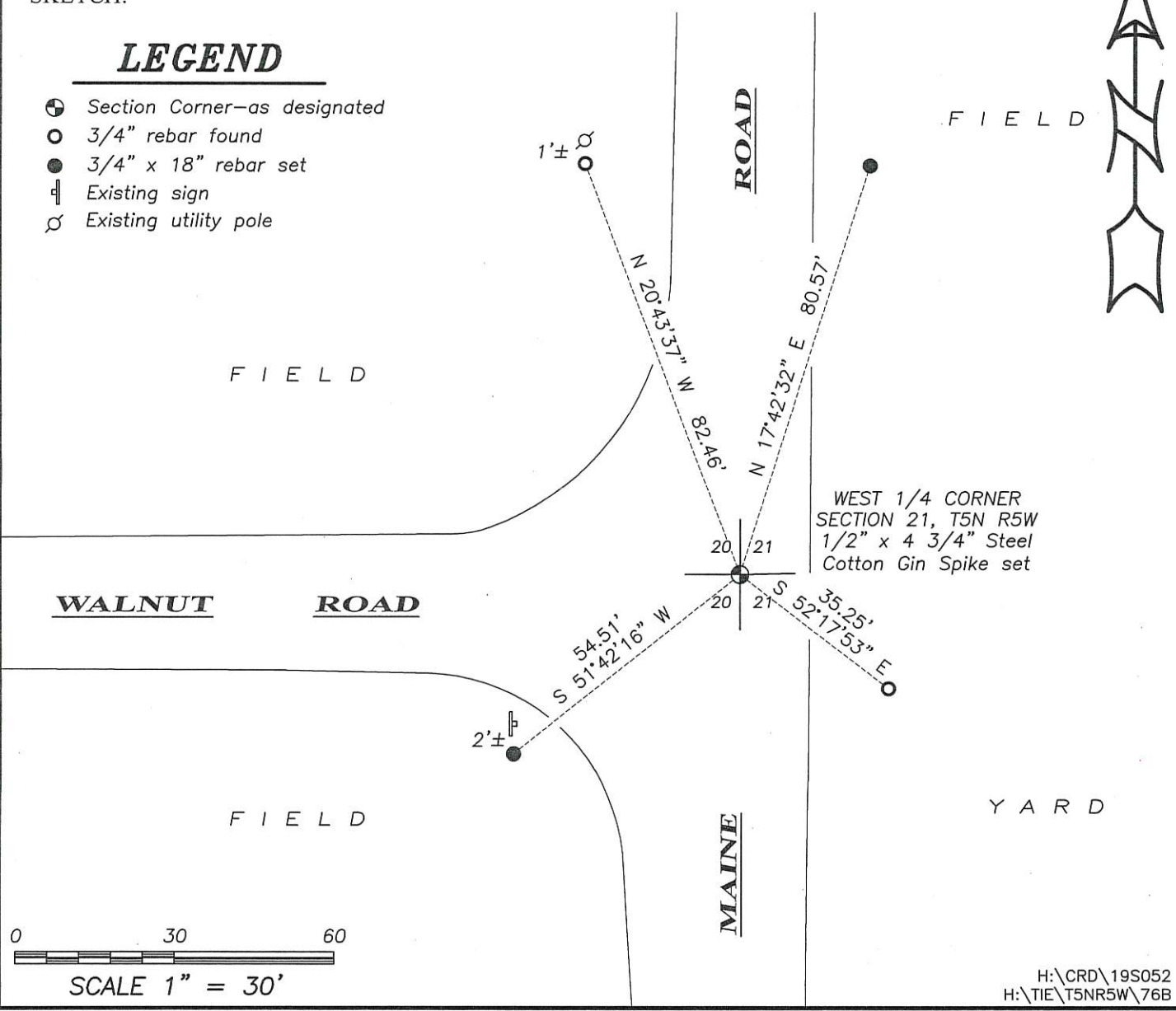
DESCRIPTION OF CORNER AND WITNESS MONUMENTS:

references and accessories used to perpetuate the original or re-established location of this corner. (c) (d) (e)
Witnesses to corner location Shane Austin, Owen Austin.
Drawn by: Owen Austin

SKETCH:

LEGEND

- ⊕ Section Corner—as designated
- 3/4" rebar found
- 3/4" x 18" rebar set
- ⊥ Existing sign
- ⊕ Existing utility pole



U.S. PUBLIC LAND SURVEY MONUMENT RECORD - GRANT COUNTY, WI

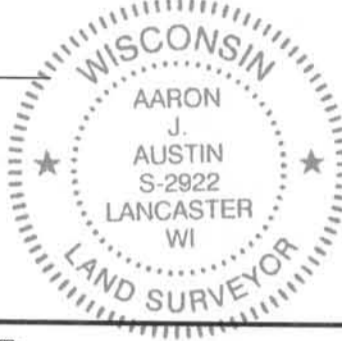
Section 20, Town 5 North Range 5 West, Town of Bloomington

CERTIFICATE:

I, Aaron J. Austin, do hereby certify that the corner location on this record was determined by me and/or under my direct supervision and that this U.S. Public Land Survey Monument Record is correct and complete to the best of my knowledge and belief.

Dated this 13 day of August, 2013.

Aaron J. Austin
Aaron J. Austin, S-2922



● = CORNER LOCATION

HISTORY OF CORNER ESTABLISHMENT:

Corner originally set in 1832 by Robert Clark.
Corner was referred to in Book C on several surveys prepared by John Clark in 1853. No other record found for this corner.

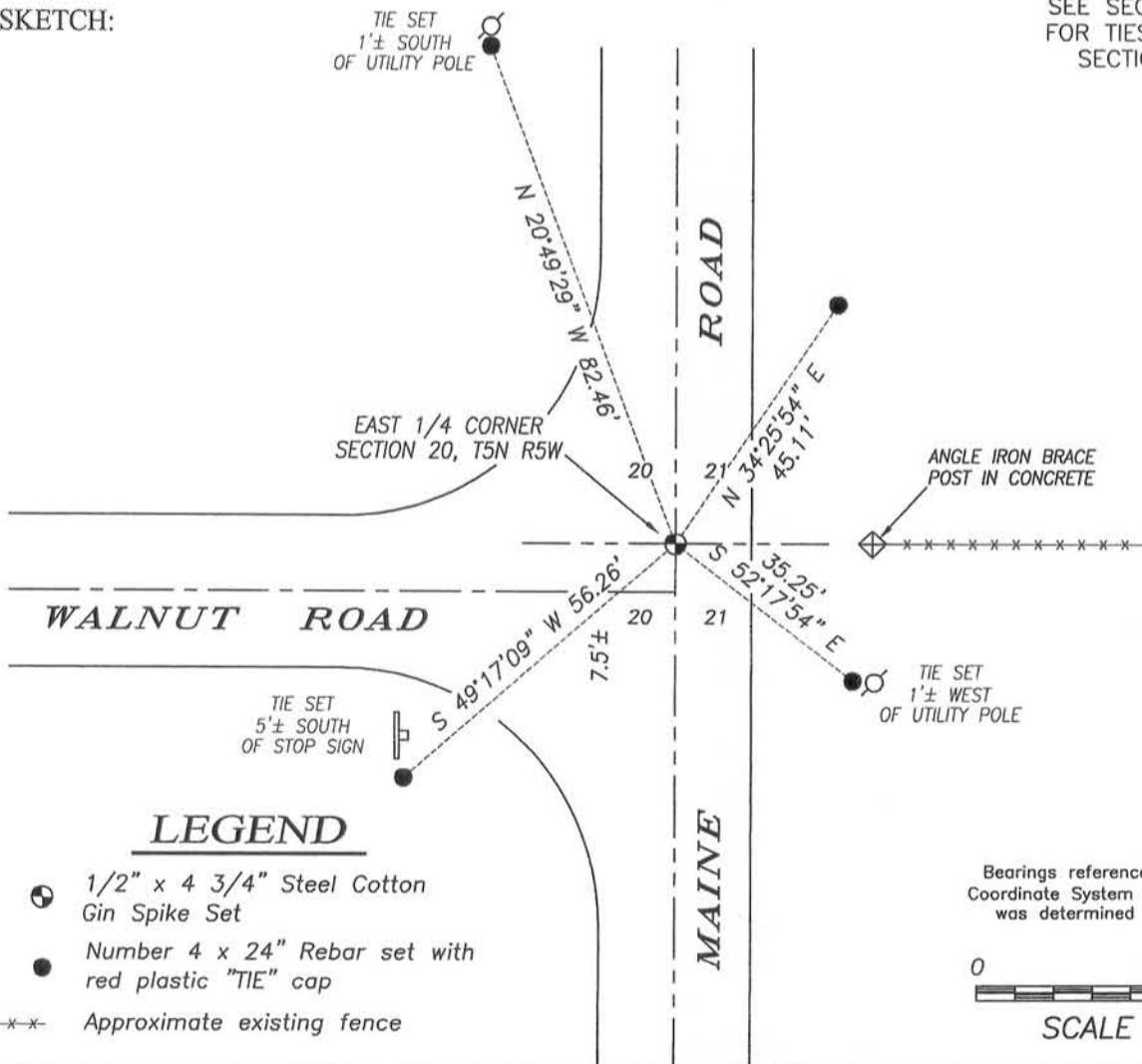
DESCRIPTION OF CORNER EVIDENCE FOUND:

Corner location falls in existing roadway. I reset this corner based upon physical evidence of the centerline of Maine Road and online with angle iron brace post in concrete to the East. I verified its location by G.P.S. observation.

DESCRIPTION OF CORNER AND WITNESS MONUMENTS, references and accessories used to perpetuate the original or re-established location of this corner. Witnesses to corner location Shane Austin.

SKETCH:

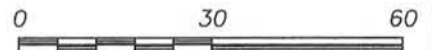
SEE SECTION SUMMARY FOR TIES TO ADJOINING SECTION CORNERS



LEGEND

- 1/2" x 4 3/4" Steel Cotton Gin Spike Set
- Number 4 x 24" Rebar set with red plastic "TIE" cap
- *- Approximate existing fence

Bearings referenced to the Grant County Coordinate System (2007 adjustment) which was determined by G.P.S. observation.



SCALE 1" = 30'



Austin Engineering LLC
austinengineeringllc.com

4211 HWY 81 E, LANCASTER, WI 53813
PHONE: 608-723-6363 FAX: 608-723-6702

JOB NO. 13s069
G:\HMP\T5NR5W\20
H:\TIE\T5NR5W\76

FIELDBOOK: TDSR
DRAWN BY: AJ AUSTIN
CREW: SW AUSTIN