

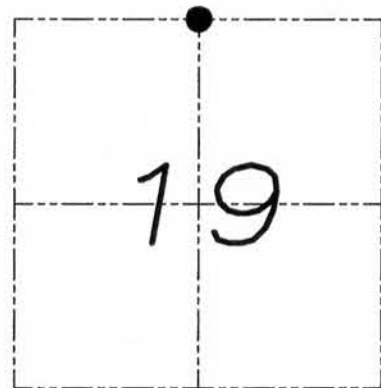
U.S. PUBLIC LAND SURVEY MONUMENT RECORD

Section 19, Town 5 North Range 5 West, Town of Bloomington, Grant County, Wisconsin

CERTIFICATE

I, Aaron J. Austin, do hereby certify that the corner location on this record was determined by me and/or under my direct supervision and that this U.S. public land survey monument record is correct and complete to the best of my knowledge and belief.

Aaron J. Austin
 Aaron J. Austin, S-2922



● = CORNER LOCATION

HISTORY OF CORNER

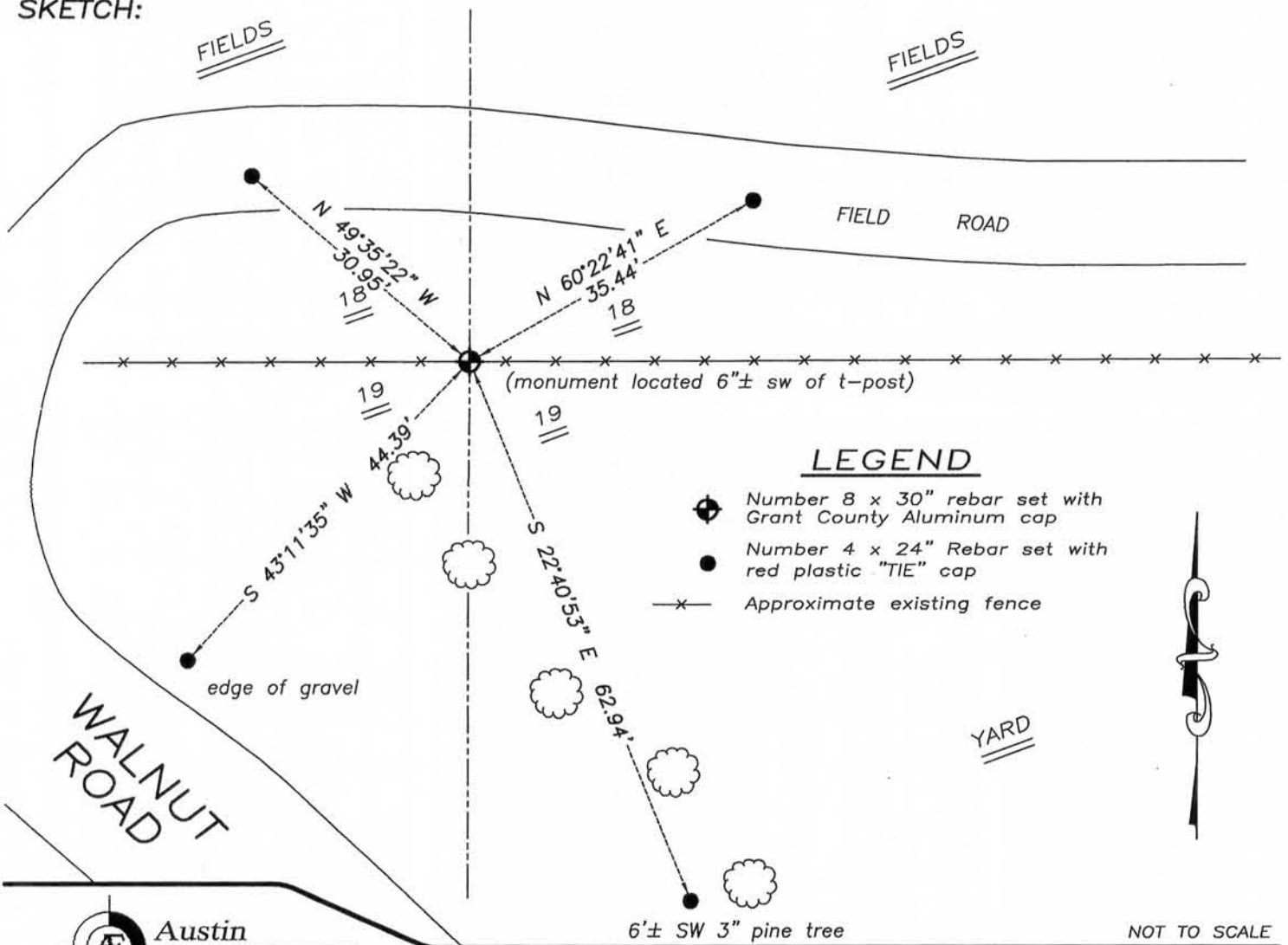
Corner was originally set in 1832 by Clark. In 1978 Larry Schmit surveyed in Section 19 with no mention of the North 1/4. No other record of the corner was found.

CORNER EVIDENCE FOUND

I was unable to locate any evidence of the corner. I reset the corner proportionately between all occupied and monumented corners along the North line of Section 19. Verified it's location using EDM & GPS methods.

DESCRIPTION OF CORNER AND WITNESS MONUMENTS, references and accessories used to perpetuate the original or re-established location of this corner. Witnesses to monument location Bobby Sedgwick & Shane Austin & Shelby Blindert

SKETCH:



LEGEND

- Number 8 x 30" rebar set with Grant County Aluminum cap
- Number 4 x 24" Rebar set with red plastic "TIE" cap
- x- Approximate existing fence



NOT TO SCALE



Austin Engineering LLC
 austinengineeringllc.com

4211 HWY 81 E, LANCASTER, WI 53813
 PHONE: 608-723-6363 FAX: 608-723-6702

JOB NUMBER 11S087-MORARAND
 FIELDBOOK: TDSR, 11-01
 G:\T5NR5W\29
 H:\TIE\T5NR5W\72

DRAWN BY: SW AUSTIN
 APPROVED: AJ AUSTIN

JUN 20 2011