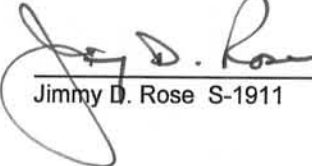


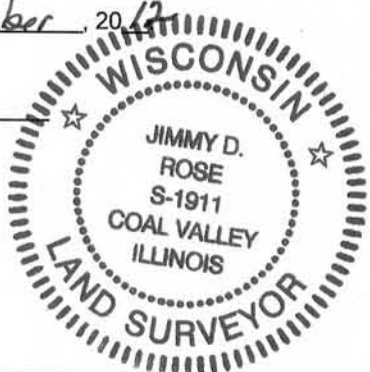
U.S. PUBLIC LAND SURVEY MONUMENT RECORD - GRANT COUNTY, WI
 Section 14, Town 5 North Range 5 West, Town of Bloomington East

CERTIFICATE:

I, Jimmy D. Rose, do hereby certify that the corner location on this record was determined by me and/or under my direct supervision and that this U.S. Public Land Survey Monument Record is correct and complete to the best of my knowledge and belief.

Dated this 12th day of November, 2012


 Jimmy D. Rose S-1911



● = CORNER LOCATION



HISTORY OF CORNER ESTABLISHMENT: CORNER ORIGINALLY SET IN 1832 BY CLARK. IN 1878 BARBER FOUND A STONE. IN 1972 THE DOT FOUND A 1" IRON PIPE. IN 2004 CORNER RE-ESTABLISHED BY LARRY AUSTIN.

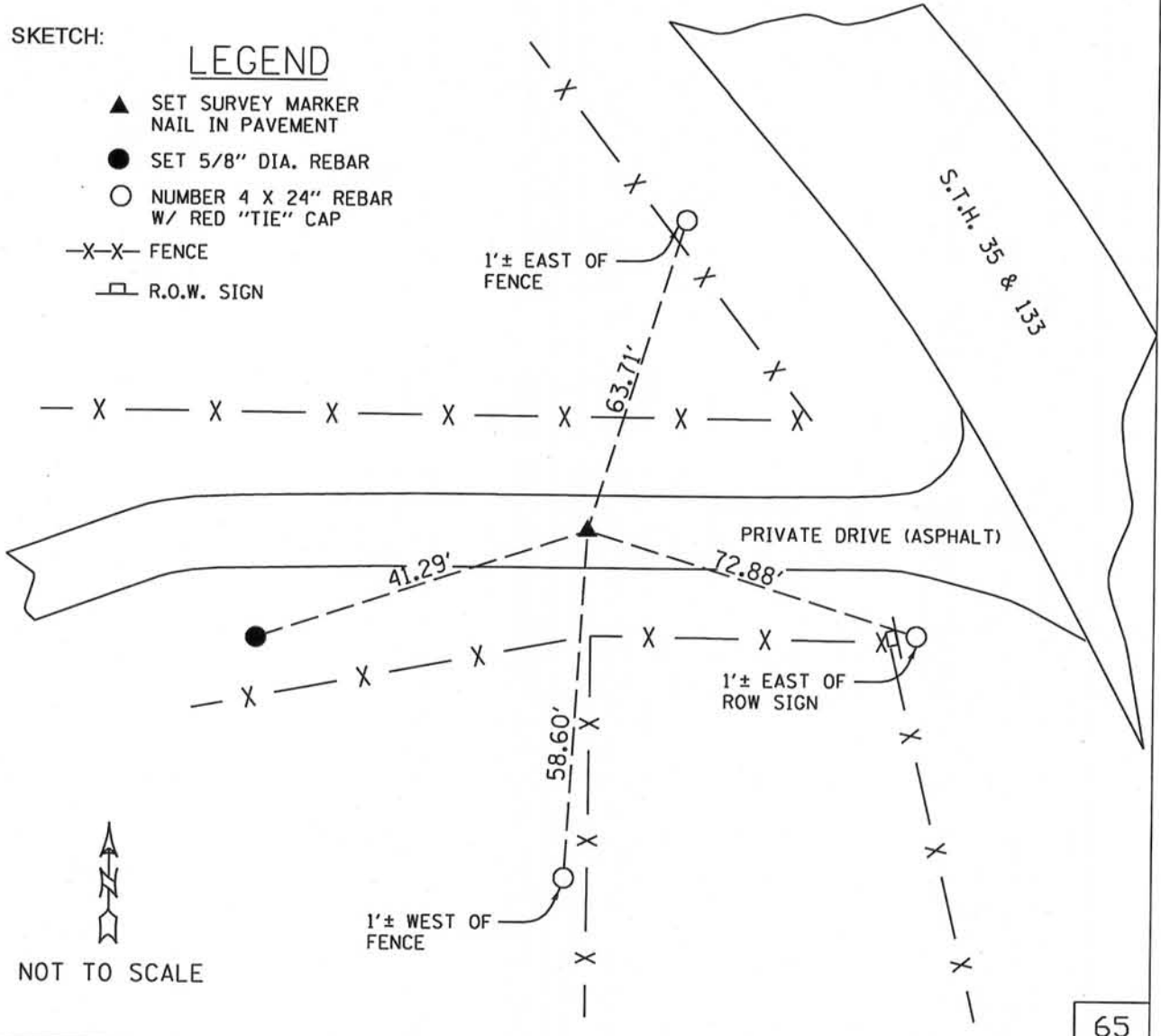
DESCRIPTION OF CORNER EVIDENCE FOUND: UNABLE TO FIND CORNER. RE-ESTABLISHED CORNER LOCATION USING ACCESSORIES SET BY AUSTIN. VERIFIED LOCATION BY TRAVERSE TO OTHER PREVIOUSLY ESTABLISHED CORNERS.

DESCRIPTION OF CORNER AND WITNESS MONUMENTS, references and accessories used to perpetuate the original or re-established location of this corner.

SKETCH:

LEGEND

- ▲ SET SURVEY MARKER NAIL IN PAVEMENT
- SET 5/8" DIA. REBAR
- NUMBER 4 X 24" REBAR W/ RED "TIE" CAP
- X-X- FENCE
- ▭ R.O.W. SIGN



NOT TO SCALE

U.S. PUBLIC LAND SURVEY MONUMENT RECORD – GRANT COUNTY, WI
Section 15, Town 5 North Range 5 West, Town of Bloomington

CERTIFICATE

I, Larry L. Austin, do hereby certify that the corner location on this record was determined by me and/or under my direct supervision and that this U.S. public land survey monument record is correct and complete to the best of my knowledge and belief.

Dated this 2nd day of September, 2004

Larry L. Austin
 Larry L. Austin S-1903



HISTORY OF CORNER ESTABLISHMENT

Corner was originally set in 1832 by Clark. In 1878 Barber found a stone. In 1972 the DOT found a 1" iron pipe.

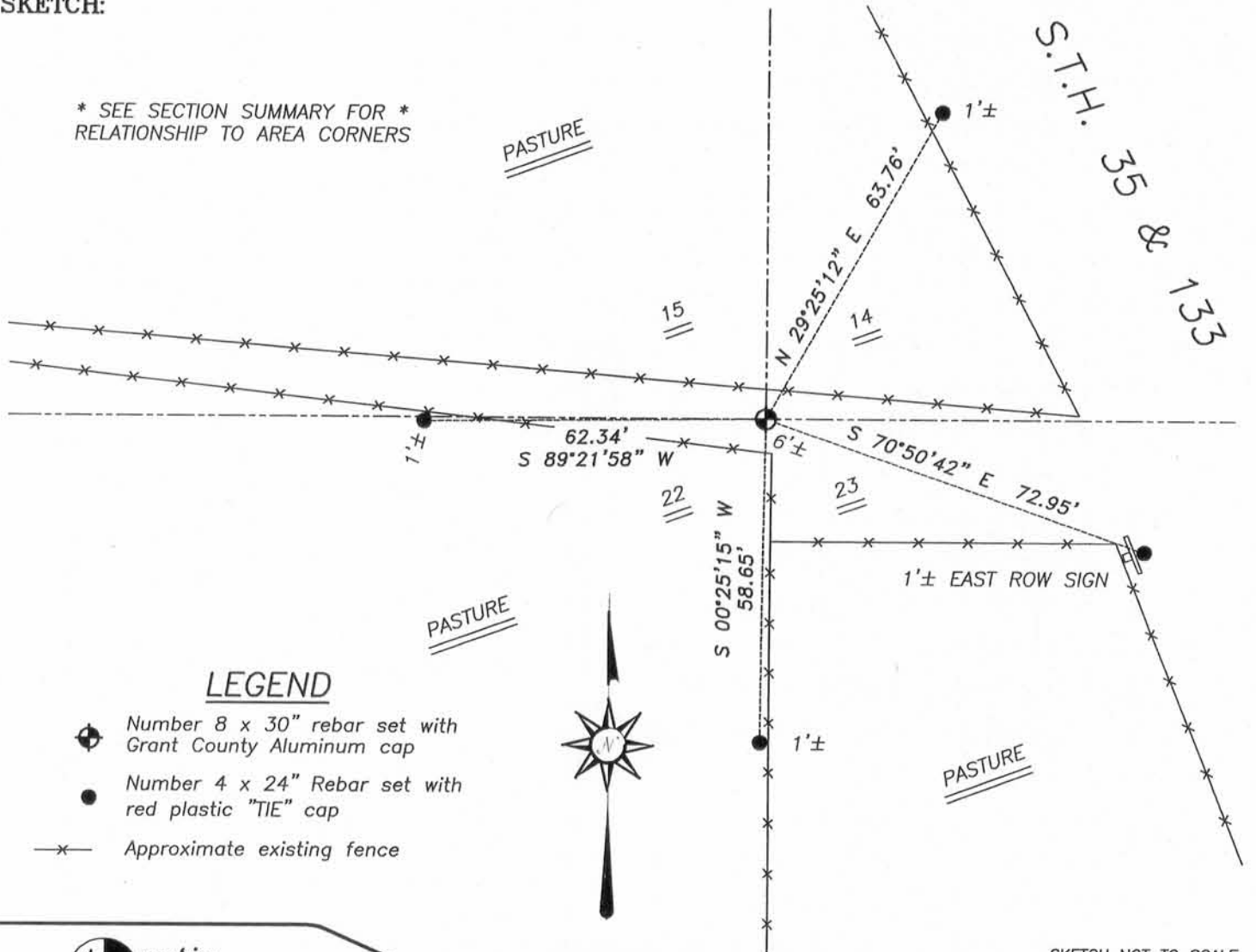
DESCRIPTION OF CORNER EVIDENCE FOUND

I was unable to locate the 1" iron pipe or stone. I retraced the location of the DOT's corner location and set the corner. Verified this location using EDM & GPS methods.

DESCRIPTION OF CORNER AND WITNESS MONUMENTS, references and accessories used to perpetuate the original or re-established location of this corner. Witnesses to corner location Bobby Sedgwick & Shane Austin & Brad Digman

SKETCH:

* SEE SECTION SUMMARY FOR *
 RELATIONSHIP TO AREA CORNERS

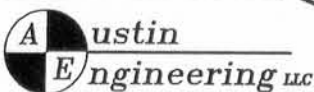


LEGEND

- ⊕ Number 8 x 30" rebar set with Grant County Aluminum cap
- Number 4 x 24" Rebar set with red plastic "TIE" cap
- x- Approximate existing fence



SKETCH NOT TO SCALE



JOB NUMBER 04S177
 FIELDBOOK: TSDR, 2329
 G:\T5NR5W\25
 H:\TIE\T5NR5W\65

DRAWN BY: SW AUSTIN
 APPROVED: LL AUSTIN

4211 HWY 81 E, LANCASTER, WI 53813
 PHONE 608-723-6363 FAX 608-723-6702