

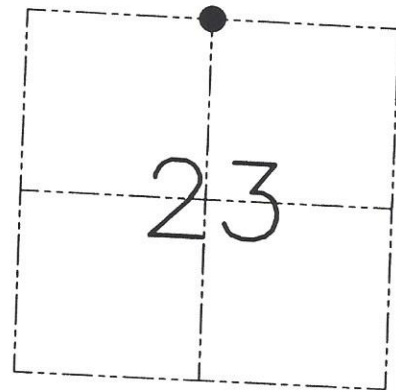
U.S. PUBLIC LAND SURVEY MONUMENT RECORD - GRANT COUNTY, WI
 Section 23, Town 5 North Range 5 West, Town of Bloomington

CERTIFICATE

I, Larry L. Austin, do hereby certify that the corner location on this record was determined by me and/or under my direct supervision and that this U.S. public land survey monument record is correct and complete to the best of my knowledge and belief.

Dated this 18th day of September, 2001

Larry L. Austin
 Larry L. Austin S-1903



● = CORNER LOCATION

HISTORY OF CORNER ESTABLISHMENT

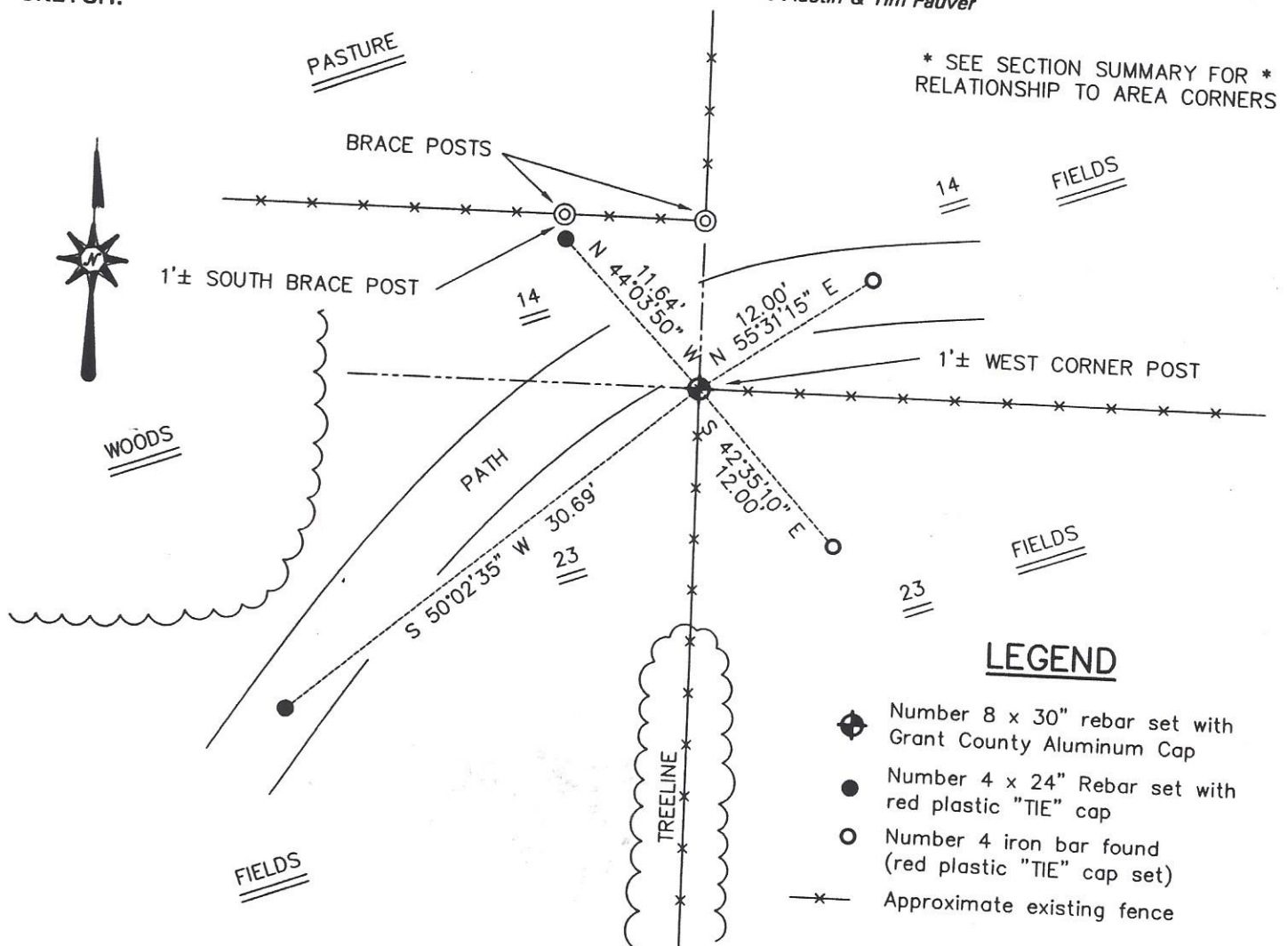
Corner was originally set in 1832 by Robert Clark. In 1988 I found an existing 1" iron pipe at an occupied location.

DESCRIPTION OF CORNER EVIDENCE FOUND

I was unable to locate the 1" iron pipe previously found. I did find two of the four ties and re-established it's location based on adjoining corners and the ties. I set the corner and two ties using EDM & GPS methods.

DESCRIPTION OF CORNER AND WITNESS MONUMENTS, references and accessories used to perpetuate the original or re-established location of this corner. Witnesses to the corner location Bobby Sedgwick & Shane Austin & Tim Fauver

SKETCH:



AUSTIN ENGINEERING, LLC
 4211 HWY 81 EAST, LANCASTER, WI 53813
 PHONE 608-723-6363 FAX 608-723-6702

FIELDBOOK: SDR33, 97-32
 G: \T5NR5W\25
 C: \SWA\TIE\T5NR5W\64
 CREW: BS-SB-SA-TF

SKETCH NOT TO SCALE

DRAWN BY: SW AUSTIN
 APPROVED: LL AUSTIN

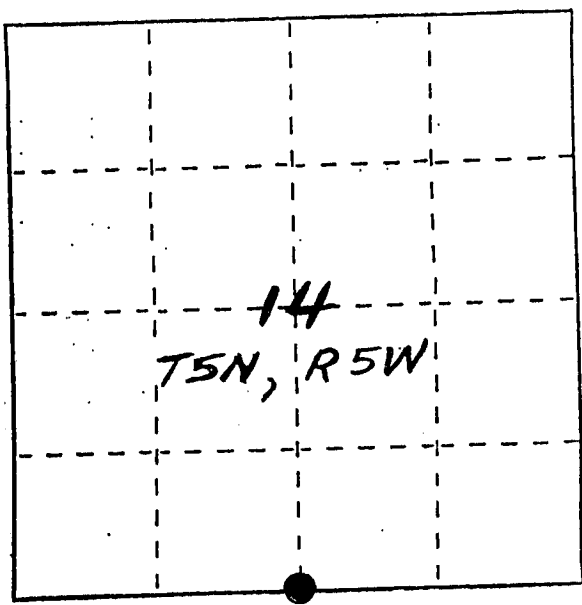
CORNER NUMBER 64

U. S. PUBLIC LAND SURVEY MONUMENT RECORD

INSTRUCTIONS: This record shall show the location of the corner and shall include all of the following nine elements (a through i).

- (a) Identify the corner by reference to the U.S. public land survey system.
- = Corner monument restored.

S 1/4 CORNER, SEC. 14
T5N, R5W
GRANT CO. WISC.



- (b) Describe any record evidence, monument evidence, occupational evidence, testimonial evidence or any other material evidence you considered, and whether the monument was found or placed.

FOUND A 1" IRON PIPE WITH RIBBON ON IT AT INTERSECTION OF FENCES; VERIFIED ITS LOCATION WITH EDM TRAVERSE OF THE AREA.

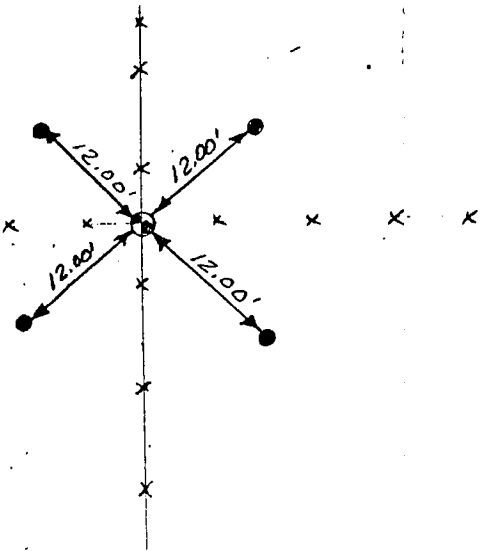
- (c) In the plan view drawing below, provide reference ties to at least 4 witness monuments, or, if the location is within a municipality, to at least 2 witness monuments. (Witness monuments shall be made of concrete, natural stone, iron or other equally durable material.) Describe witness monuments.

- (d) Show a plan view drawing depicting the relevant monuments and reference ties which is sufficient in detail to enable accurate relocation of the corner monument if the corner monument is disturbed. Indicate north.

NO SCALE



- 1" IRON PIPE = S 1/4 CORNER SEC 14
- 1/2" x 24" REBAR
- x-x EXISTING FENCE



RECEIVED

JUN 7 1988
2 0 1988

(e) Describe any material discrepancy between the location of the corner as restored or reestablished and the location of that corner as previously restored or reestablished by distance and direction. Show the discrepancy on the plan view drawing under (d), above. Show the distances between the corner as previously restored or reestablished and (1) the corner as restored or reestablished, and (2) to at least 2 of the witness monuments shown on the drawing in (d), above. *NONE*

(f) Was the corner restored through acceptance of (1) an obliterated evidence location, or, (2) a found perpetuated location? *(2)*

(g&h) Was the corner reestablished through lost corner proportionate methods? If so, show the method, including the directions and distances to other public land survey corners used as evidence or used for proportioning in determining the corner location?

(i) I, LARRY L. AUSTIN
(type or print name) certify that the corner location shown on this record was determined by me or under my direction and control and that this U.S. Public Land Survey Monument Record is correct and complete to the best of my knowledge and belief.

Larry L. Austin
Signature

4/28/88
Date

