

U. S. PUBLIC LAND SURVEY MONUMENT RECORD

INSTRUCTIONS: This record shall show the location of the corner and shall include all of the following nine elements (a through i).

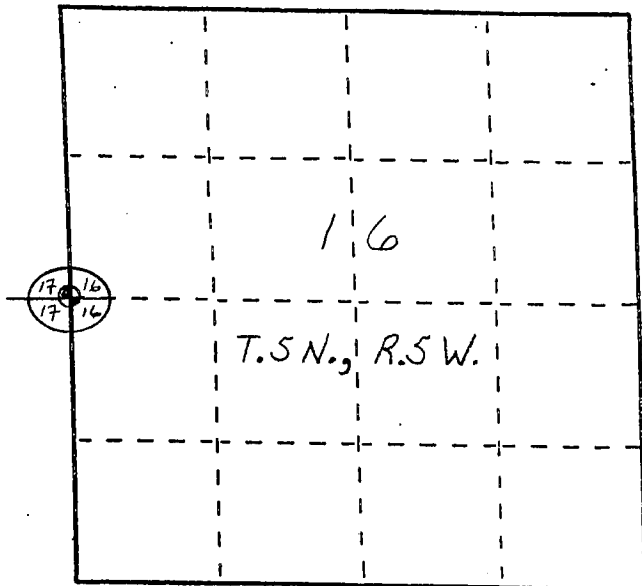
- (a) Identify the corner by reference to the U.S. public land survey system.
- = Corner monument restored.

The West Quarter Corner
 of Section 16, Town 5 North,
 Range 5 West, Bloomington
 Township, Grant County,
 Wisconsin.

Grant County Coordinates

$N = 546,041.53'$

$E = 746,335.97'$

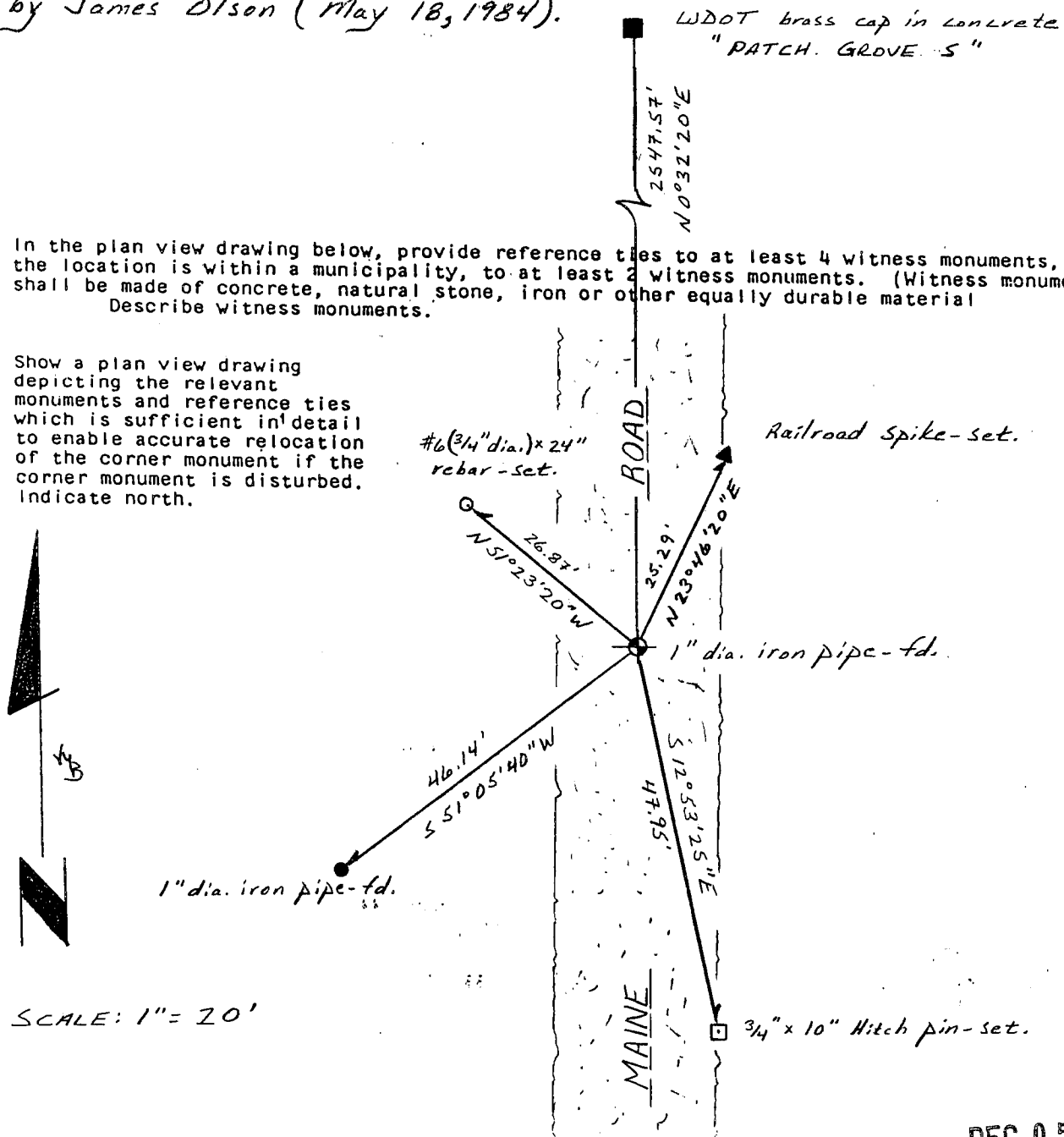


- (b) Describe any record evidence, monument evidence, occupational evidence, testimonial evidence or any other material evidence you considered, and whether the monument was found or placed.

I found and accepted a 1" iron pipe noted on a tie sheet by James Olson (May 18, 1984).

- (c) In the plan view drawing below, provide reference ties to at least 4 witness monuments, or, if the location is within a municipality, to at least 2 witness monuments. (Witness monuments shall be made of concrete, natural stone, iron or other equally durable material. Describe witness monuments.)

- (d) Show a plan view drawing depicting the relevant monuments and reference ties which is sufficient in detail to enable accurate relocation of the corner monument if the corner monument is disturbed. Indicate north.



SCALE: 1" = 20'

(e) Describe any material discrepancy between the location of the corner as restored or reestablished and the location of that corner as previously restored or reestablished by distance and direction. Show the discrepancy on the plan view drawing under (d), above. Show the distances between the corner as previously restored or reestablished and (1) the corner as restored or reestablished, and (2) to at least 2 of the witness monuments shown on the drawing in (d), above.

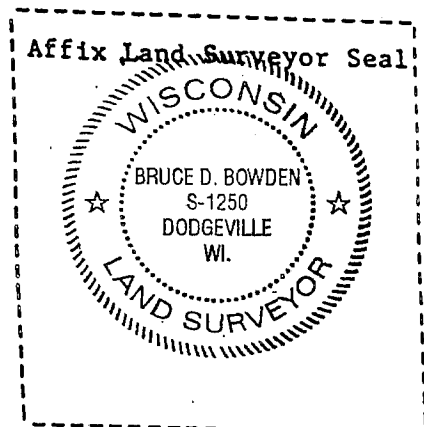
None.

(f) Was the corner restored through acceptance of (1) an obliterated evidence location, or, (2) a found perpetuated location?

A found perpetuated location.

(g&h) Was the corner reestablished through lost corner proportionate methods? If so, show the method, including the directions and distances to other public land survey corners used as evidence or used for proportioning in determining the corner location?

No.



(1) I, Bruce D. Bowden
(type or print name) certify that the corner location shown on this record was determined by me or under my direction and control and that this U.S. Public Land Survey Monument Record is correct and complete to the best of my knowledge and belief.

Bruce D. Bowden
Signature

Nov 12, 2003
Date

CERTIFIED LAND CORNER

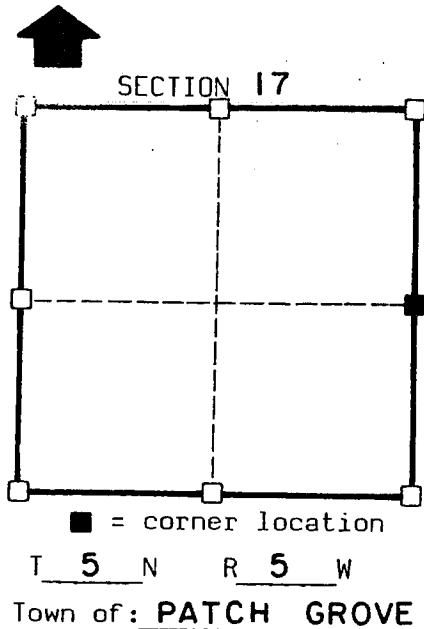
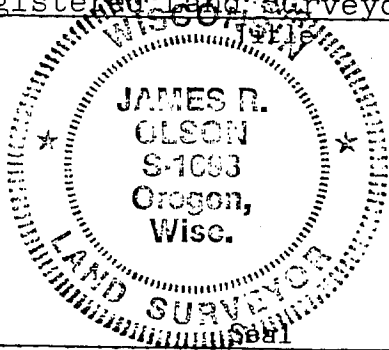
STATE OF WISCONSIN)
 COUNTY OF GRANT) S.S.

CERTIFICATE

I, James R. Olson, do hereby certify that on the 7th day of May 1984, I found (~~evidence~~) (no evidence) of the E¹ corner of Section 17, T 5 N, R 5 W, Fourth Principal Meridian, and I re-established said corner according to the Wisconsin Statutes as shown and described hereon.

Dated this 18th day of May 19 84

James R. Olson
 Registered Land Surveyor



History of original corner establishment:

No history of corner since original government survey.

Set corner by existing physical evidence.

Description of corner evidence found:

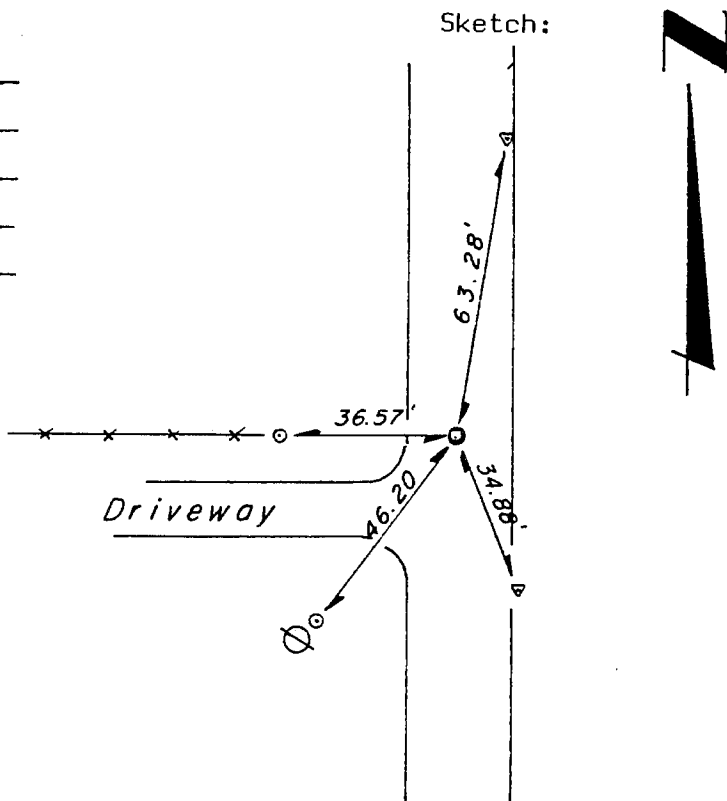
Evidence used was the centerline of Main Rd. and fenceline West.

Description of corner and witness monuments, references and accessories used to perpetuate the original or re-established location of this corner:

Witnesses to corner location:

James R. Olson
Kurt Pastina

Sketch:



Legend

- x-x- Fenceline
- ⊙ Power Pole
- ▽ R.R. Spike
- 1" ⌀ Iron pipe

SURVEY CONTROL ORDER

Horizontal
Vertical

WISCONSIN COORDINATE SYSTEM

Corner	East(X)	North(Y)	Elevation(Z)	Zone
Control Sta. Name				