

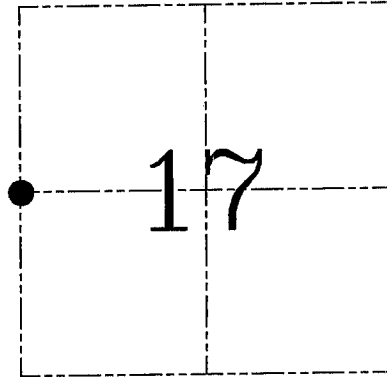
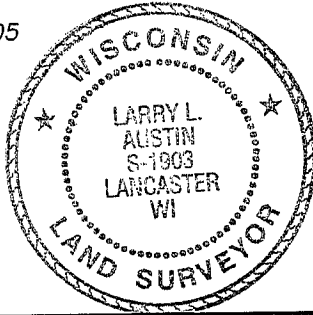
U.S. PUBLIC LAND SURVEY MONUMENT RECORD – GRANT COUNTY, WI
Section 17, Town 5 North Range 5 West, Town of Patch Grove

CERTIFICATE

I, Larry L. Austin, do hereby certify that the corner location on this record was determined by me and/or under my direct supervision and that this U.S. public land survey monument record is correct and complete to the best of my knowledge and belief.

Dated this 18th day of August, 2005

Larry L. Austin
 Larry L. Austin S-1903



● = CORNER LOCATION

HISTORY OF CORNER ESTABLISHMENT

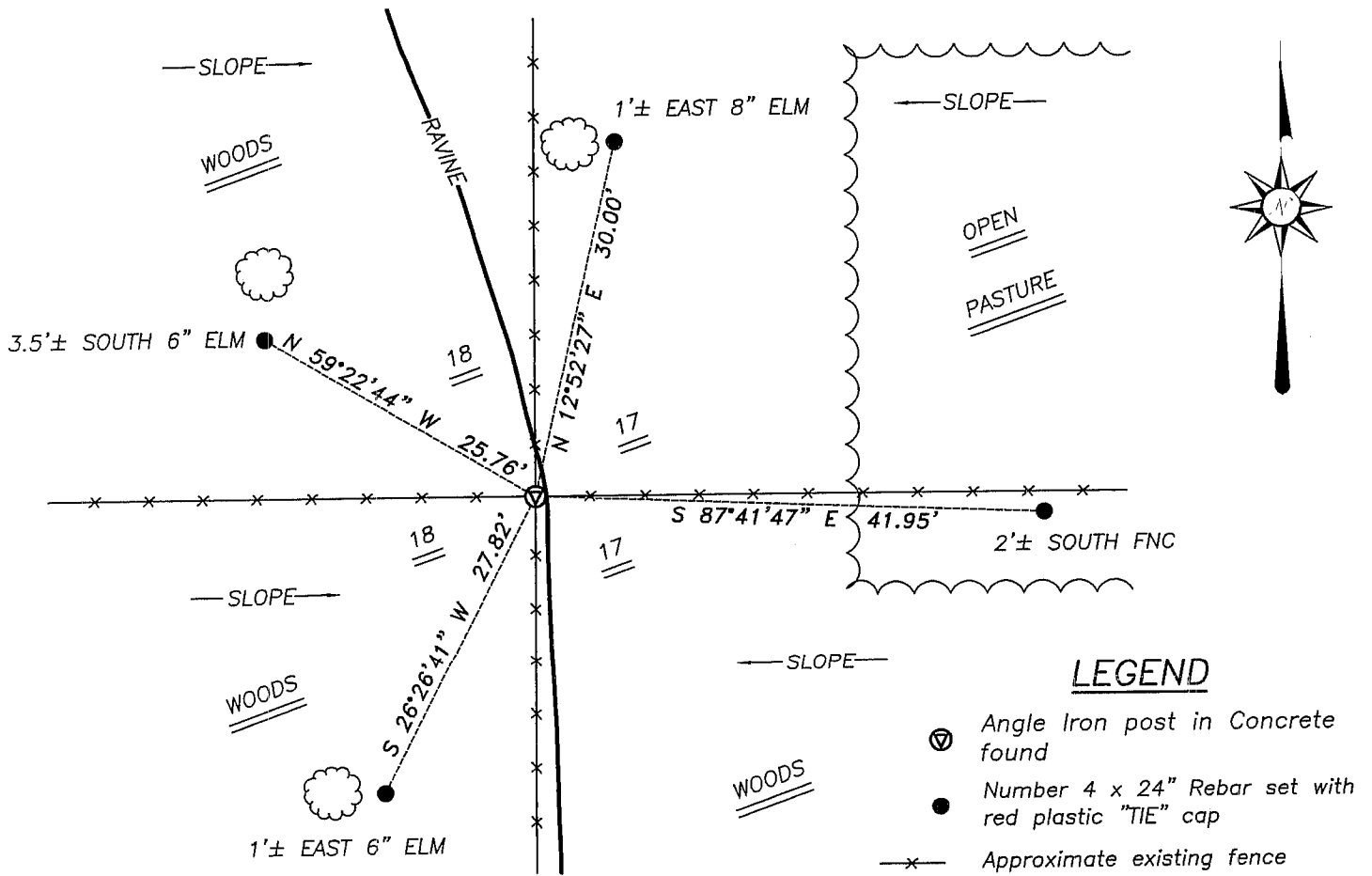
Corner was originally set in 1832 by Clark.
 No other record of the corner was found.

DESCRIPTION OF CORNER EVIDENCE FOUND

I found and accepted an occupied 4-way fence intersection after an EDM & GPS traverse of the area.

DESCRIPTION OF CORNER AND WITNESS MONUMENTS, references and accessories used to perpetuate the original or re-established location of this corner. Witnesses to corner location Bobby Sedgwick & Brad Digman & Shane Austin

SKETCH:



LEGEND

- ⊕ Angle Iron post in Concrete found
- Number 4 x 24" Rebar set with red plastic "TIE" cap
- x— Approximate existing fence

* SEE SECTION SUMMARY FOR *
 RELATIONSHIP TO AREA CORNERS

SKETCH NOT TO SCALE



Austin
 Engineering LLC

4211 HWY 81 E, LANCASTER, WI 53813
 PHONE 608-723-6363 FAX 608-723-6702

JOB NUMBER 05S050
 FIELDBOOK: TDSR, 2516
 G:\T5NR6W\01
 H:\TIE\T5NR5W\55

DRAWN BY: ML DIGMAN
 APPROVED: LL AUSTIN