

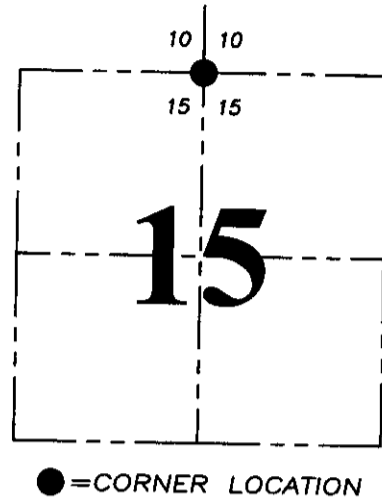
**U.S. PUBLIC LAND SURVEY MONUMENT RECORD - GRANT COUNTY, WI**  
 Section 15, Town 5 North Range 5 West, Town of Bloomington

**CERTIFICATE:**

I, Aaron J. Austin, Wisconsin Professional Land Surveyor, do hereby certify that the corner location on this record was determined by me and/or under my direct supervision and that this U.S. Public Land Survey Monument Record is correct and complete to the best of my knowledge and belief.

Dated this 21st day of May 2015.

*Aaron J. Austin*  
 Aaron J. Austin, S-2922  
 LANCASTER WI  
 LAND SURVEYOR



HISTORY OF CORNER ESTABLISHMENT:

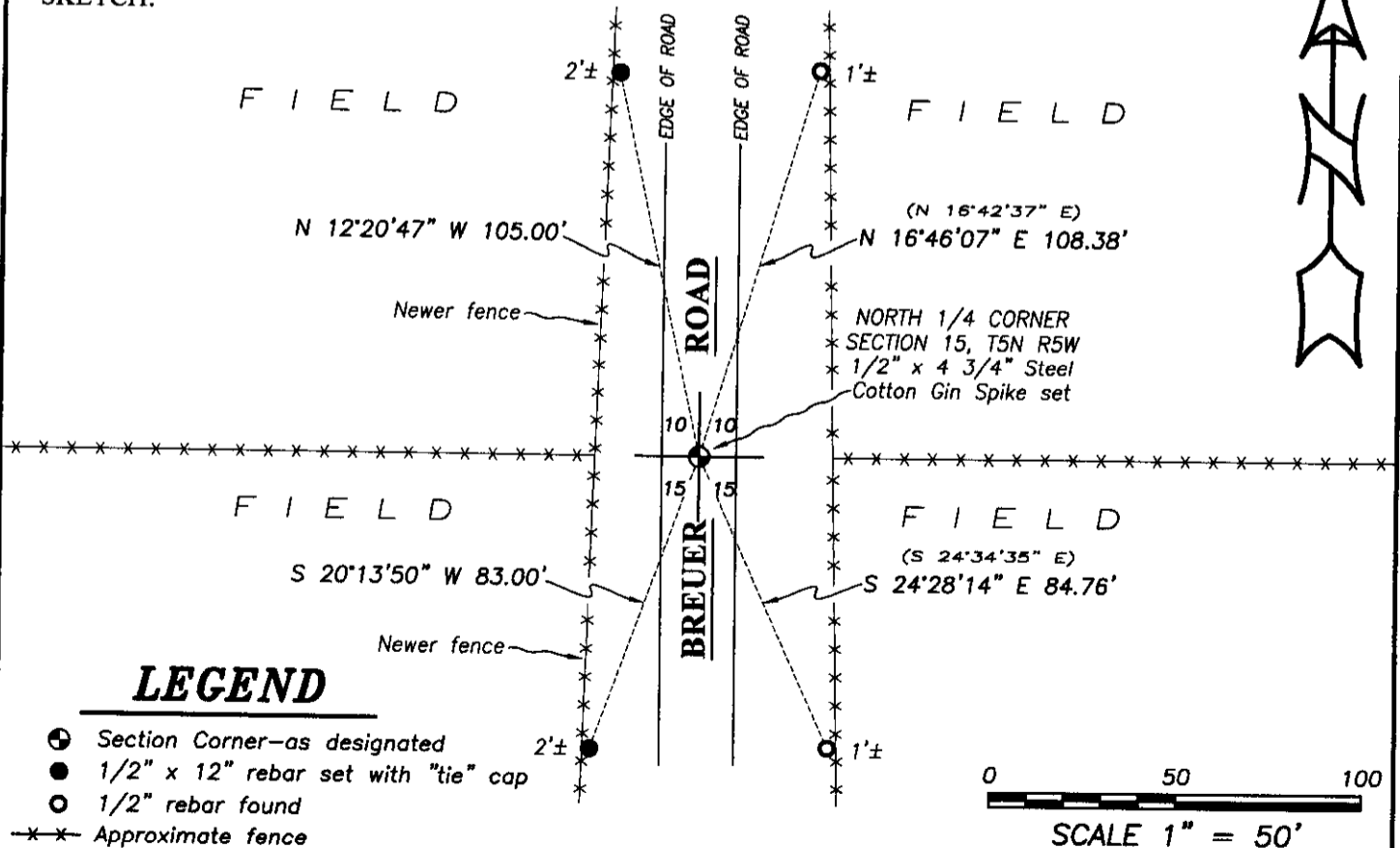
- 1832-Robert Clark set original corner.
- 1854-John Clark tied to the corner on a Survey in Book C, Page 65.
- 1857-Hayden tied to the corner on a Survey in Book C, Page 168.
- 2004-Larry Austin tied to the corner on a Survey in Book 14, Page 81.
- 2004-Larry Austin tied to the corner on a Survey in Book 14, Page 82 and prepared a U.S. Public Land Survey Monument Record.
- 2012-Richard Marks tied to the corner on a Survey in Book 31, Page 40.

DESCRIPTION OF CORNER EVIDENCE FOUND:

I had a faint reading for this corner at the intersection of 2 witness corners found. I set a Cotton Gin Spike at this location to bring the monument to the surface. I also set 2 witness corners as shown hereon and verified this location with E.D.M. and G.P.S. methods.

DESCRIPTION OF CORNER AND WITNESS MONUMENTS, references and accessories used to perpetuate the original or re-established location of this corner. Witness to corner location Shane Austin.

SKETCH:



4211 HWY 81 E, LANCASTER, WI 53813  
 PHONE: 608-723-6363 FAX: 608-723-6702

JOB NO: 15s036  
 H:CRD\15s085  
 H:\TIE\T5NR5W\46(2)

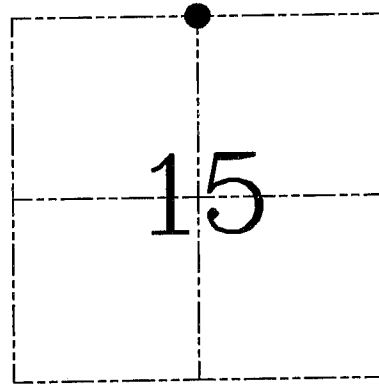
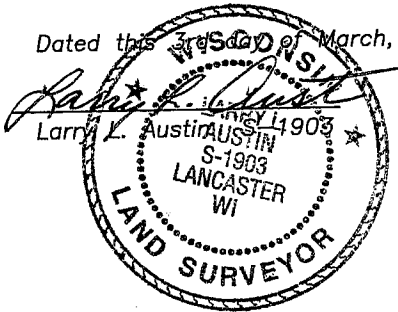
FIELDBOOK: TDSR  
 DRAWN BY: AJ AUSTIN  
 CREW: SW AUSTIN

**U.S. PUBLIC LAND SURVEY MONUMENT RECORD – GRANT COUNTY, WI**  
**Section 15, Town 5 North Range 5 West, Town of Bloomington**

CERTIFICATE

I, Larry L. Austin, do hereby certify that the corner location on this record was determined by me and/or under my direct supervision and that this U.S. public land survey monument record is correct and complete to the best of my knowledge and belief.

Dated this 3rd day of March, 2004



● = CORNER LOCATION

HISTORY OF CORNER ESTABLISHMENT

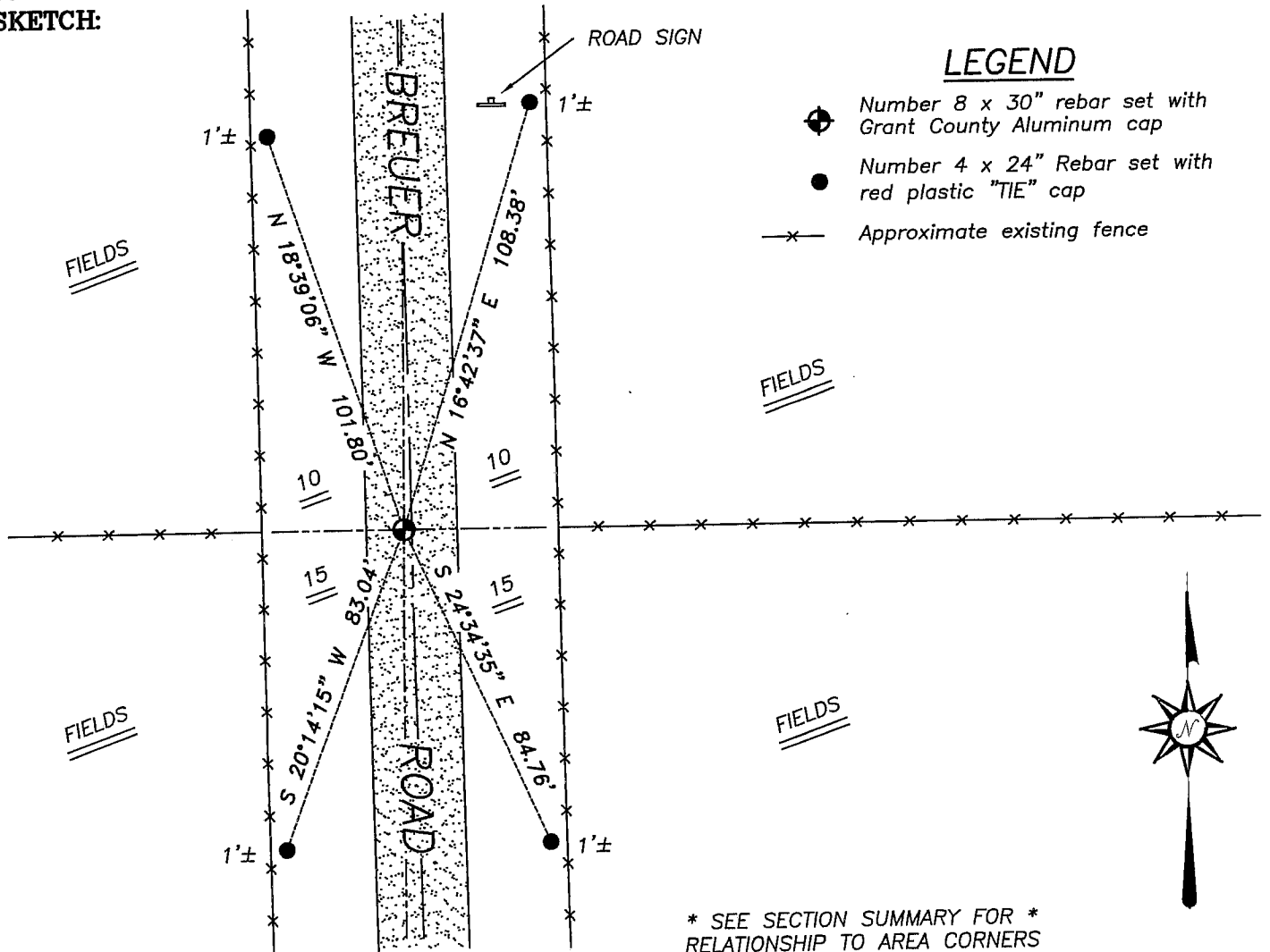
Corner was originally set in 1832 by Robert Clark.  
 No other record of the corner was found.

DESCRIPTION OF CORNER EVIDENCE FOUND

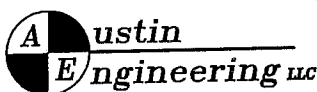
I reset the corner on-line with fence East-West for Northing. Easting was established proportionately between the Northwest and Northeast corners. I verified this location using EDM & GPS methods.

DESCRIPTION OF CORNER AND WITNESS MONUMENTS, references and accessories used to perpetuate the original or re-established location of this corner. Witnesses to corner location Bobby Sedgwick & Shane Austin & Brad Digman

**SKETCH:**



SKETCH NOT TO SCALE



4211 HWY 81 E, LANCASTER, WI 53813  
 PHONE 608-723-6363 FAX 608-723-6702

JOB NUMBER 04S154  
 FIELDBOOK: TSDR, 2329  
 G:\T5NR5W\25  
 H:\TIE\T5NR5W\46

DRAWN BY: SW AUSTIN  
 APPROVED: LL AUSTIN