

# U.S. PUBLIC LAND SURVEY MONUMENT RECORD

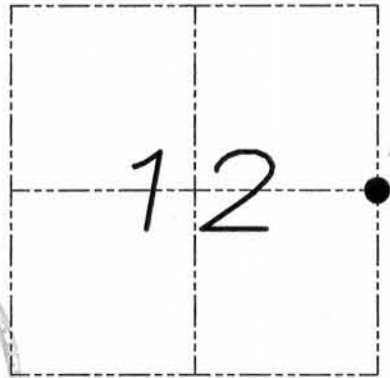
Section 12, Town 5 North Range 5 West, Town of Patch Grove, Grant County, Wisconsin

## CERTIFICATE

I, Larry L. Austin, do hereby certify that the corner location on this record was determined by me and/or under my direct supervision and that this U.S. public land survey monument record is correct and complete to the best of my knowledge and belief.

*Larry L. Austin*  
 Larry L. Austin, S-1903

8.15.09  
 date



● = CORNER LOCATION

## HISTORY OF CORNER

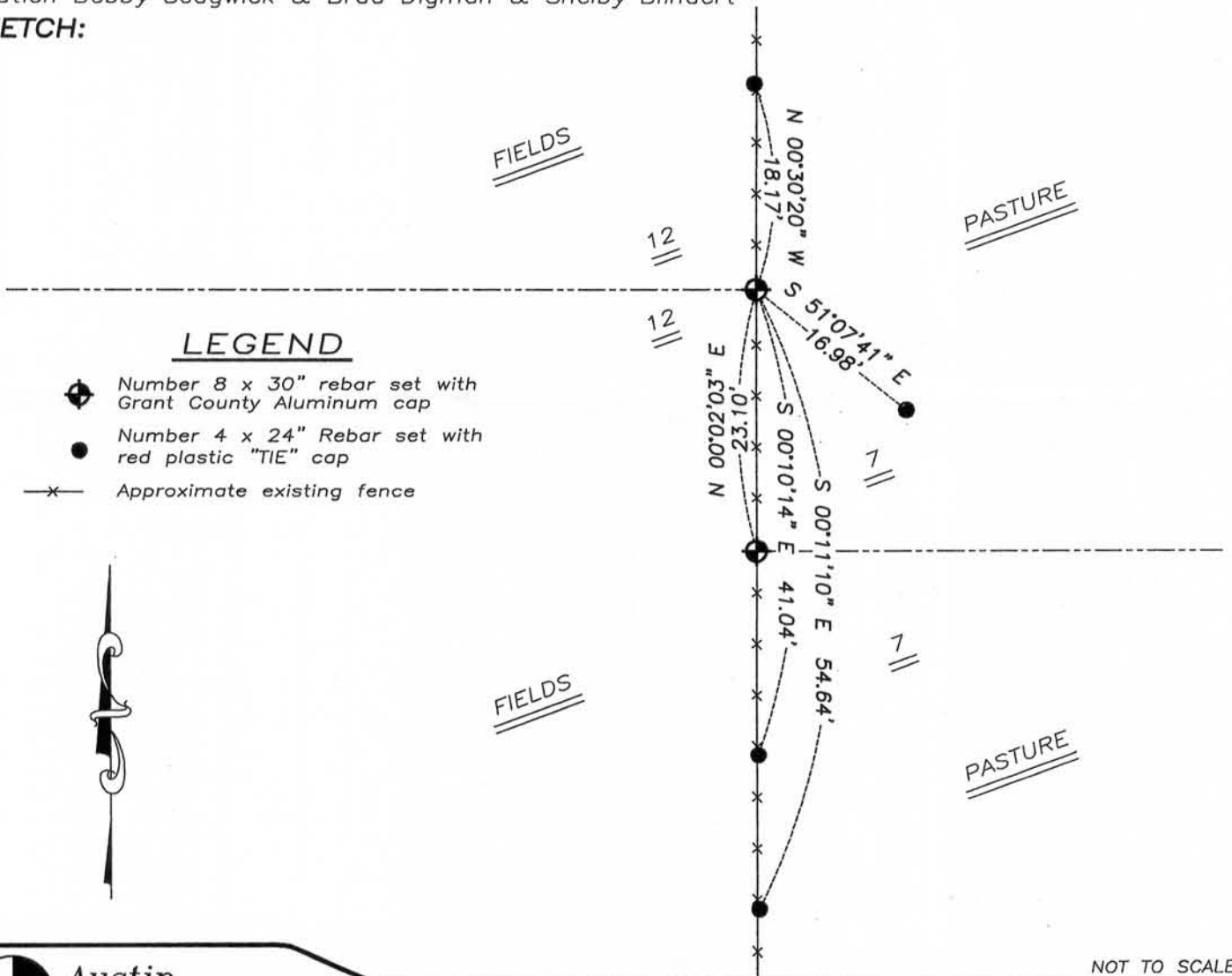
Corner was originally set in 1832 by Lucius Lyon.  
 No other record of the corner was found.

## CORNER EVIDENCE FOUND

I set this corner proportionally along the Town Line in an existing North-South fence line. I verified its location by E.D.M. and G.P.S. methods.

DESCRIPTION OF CORNER AND WITNESS MONUMENTS, references and accessories used to perpetuate the original or re-established location of this corner. Witnesses to monument location Bobby Sedgwick & Brad Digman & Shelby Blindert

## SKETCH:



## LEGEND

- ◆ Number 8 x 30" rebar set with Grant County Aluminum cap
- Number 4 x 24" Rebar set with red plastic "TIE" cap
- x- Approximate existing fence



NOT TO SCALE

**Austin Engineering LLC**

4211 HWY 81 E, LANCASTER, WI 53813  
 PHONE 608-723-6363 FAX 608-723-6702

JOB NUMBER 09S140-CRUBEL  
 FIELDBOOK TDSR, 2011  
 G:\T5NR4W\28  
 H:\TIE\T5NR5W\40

DRAWN BY: SW AUSTIN  
 APPROVED: LL AUSTIN

40

NOV 04 2011