

U.S. PUBLIC LAND SURVEY MONUMENT RECORD - GRANT COUNTY, WI

Section 11, Town 5 North Range 5 West, Town of Patch Grove (a)

NOTE: This form is intended and designed to fulfill all requirements of the Wisconsin Administrative Code Chapter A-E 7.08, U.S. Public Land Survey Monument Record (3) (a) (b) (c) (d) (e) (f) (g) (h) (i).

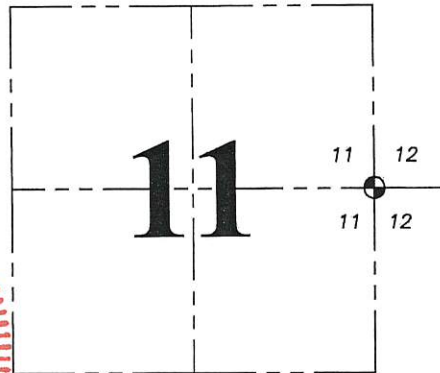
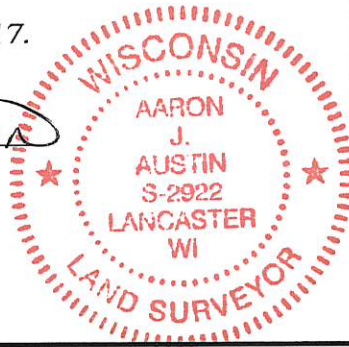
Corner No. 039

CERTIFICATE: (i)

I, Aaron J. Austin, Wisconsin Professional Land Surveyor, do hereby certify that the corner location on this record was determined by me and/or under my direct supervision and that this U.S. Public Land Survey Monument Record is correct and complete to the best of my knowledge and belief.

Dated this 3rd day of January, 2017.

Aaron J. Austin
Aaron J. Austin, S-2922



● = CORNER LOCATION

Grant County Coordinates:
NAD 83 (2011)
Northing: 551,265.29
Easting: 762,241.89

HISTORY OF CORNER ESTABLISHMENT:

1832 - Robert Clark set the original corner.
1997 - Larry Austin reset the corner and prepared a Survey Monument Record.

DESCRIPTION OF CORNER EVIDENCE FOUND: (b) (f) (g) (h)

The corner and no witness corners were recovered as established by Larry Austin. I reset the corner based upon measurements taken to a previous survey by Larry Austin with a date of 12-2-1996 and filed in Book X, Page 108. I set 4 new witness corners after I verified the corner's location with G.P.S. and E.D.M. methods.

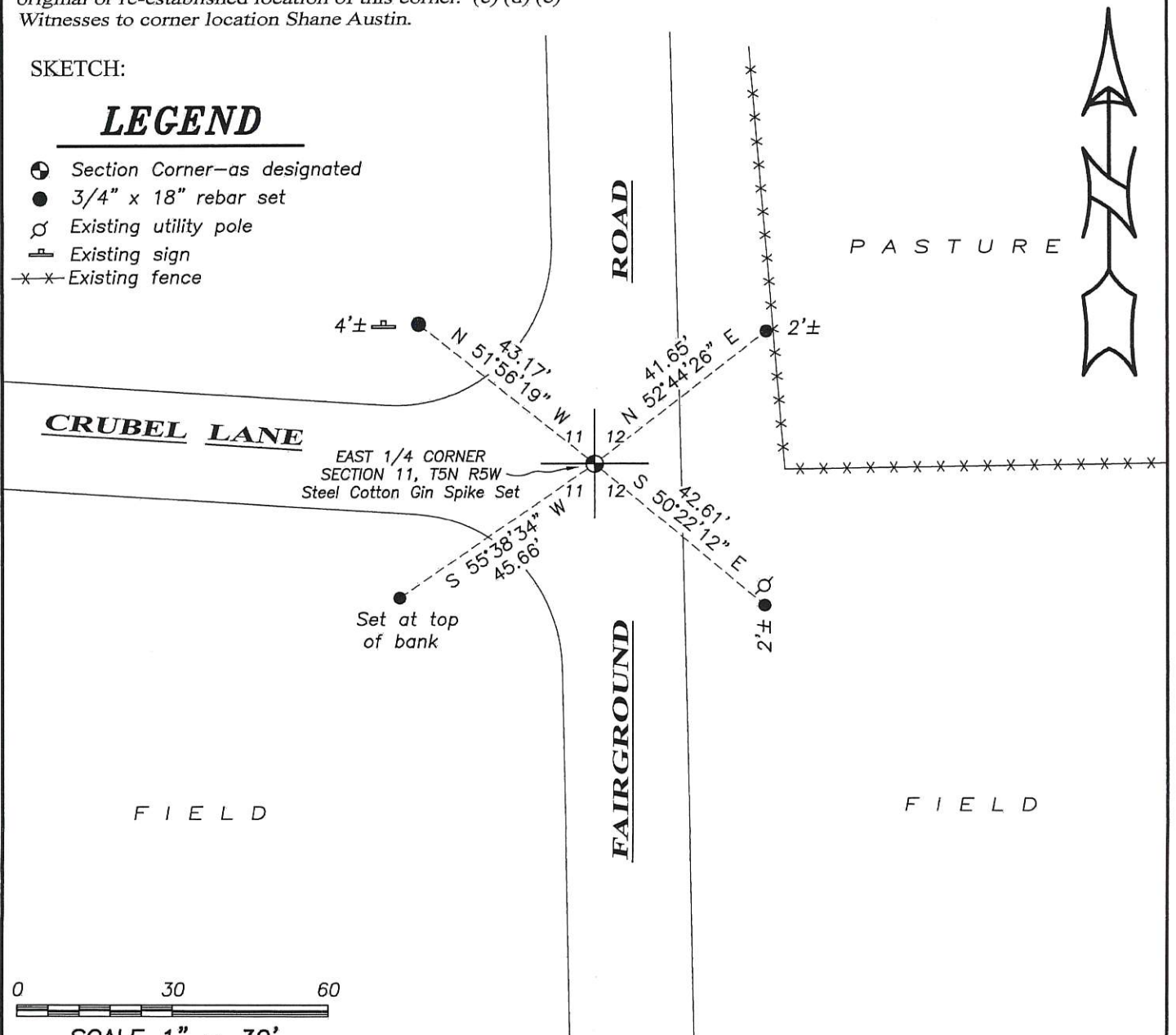
DESCRIPTION OF CORNER AND WITNESS MONUMENTS, references and accessories used to perpetuate the original or re-established location of this corner. (c) (d) (e)

Witnesses to corner location Shane Austin.

SKETCH:

LEGEND

- Section Corner—as designated
- 3/4" x 18" rebar set
- ⊕ Existing utility pole
- ⊞ Existing sign
- x-x- Existing fence

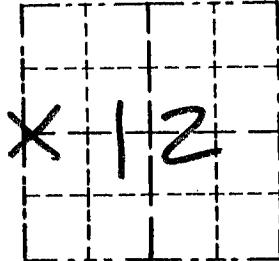


Survey Monument Record

TYPE OF MONUMENT RAILROAD SPIKE
SET

CORNER NO. ~~12~~ 39
SECTION 12
TOWN 5N
RANGE 5W

FIELD BOOK: 96-18
PAGE (25)



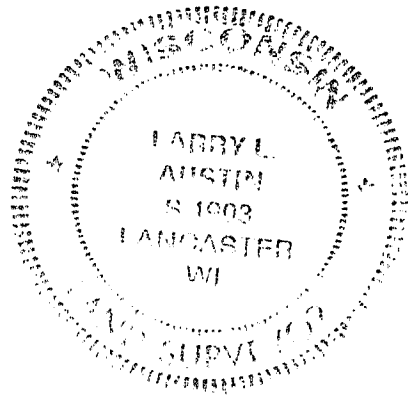
LOCATION
(Indicated by "X")

BASIS FOR MONUMENT LOCATION

(Use reverse side if necessary)

Show info such as: History of corner, with reference to Vol. and pg., dates, surveyor; exact description of monument replaced; if location computed, by taped or EDM traverse; landowner, remarks, etc.

SEAL:



CORNER SET IN 1832 BY ROBERT CLARK. NO RECORD OF CORNER FOUND SINCE ORIGINAL SURVEYS. CORNER WAS SET AT A FOUND NAIL WHICH WAS WEST OF ~~E~~ and ONLINE WITH FENCE TO EAST. VERIFIED ITS LOCATION USING EDM METHODS.

CERTIFIED CORRECT

Larry L. Austin
Registered Land Surveyor

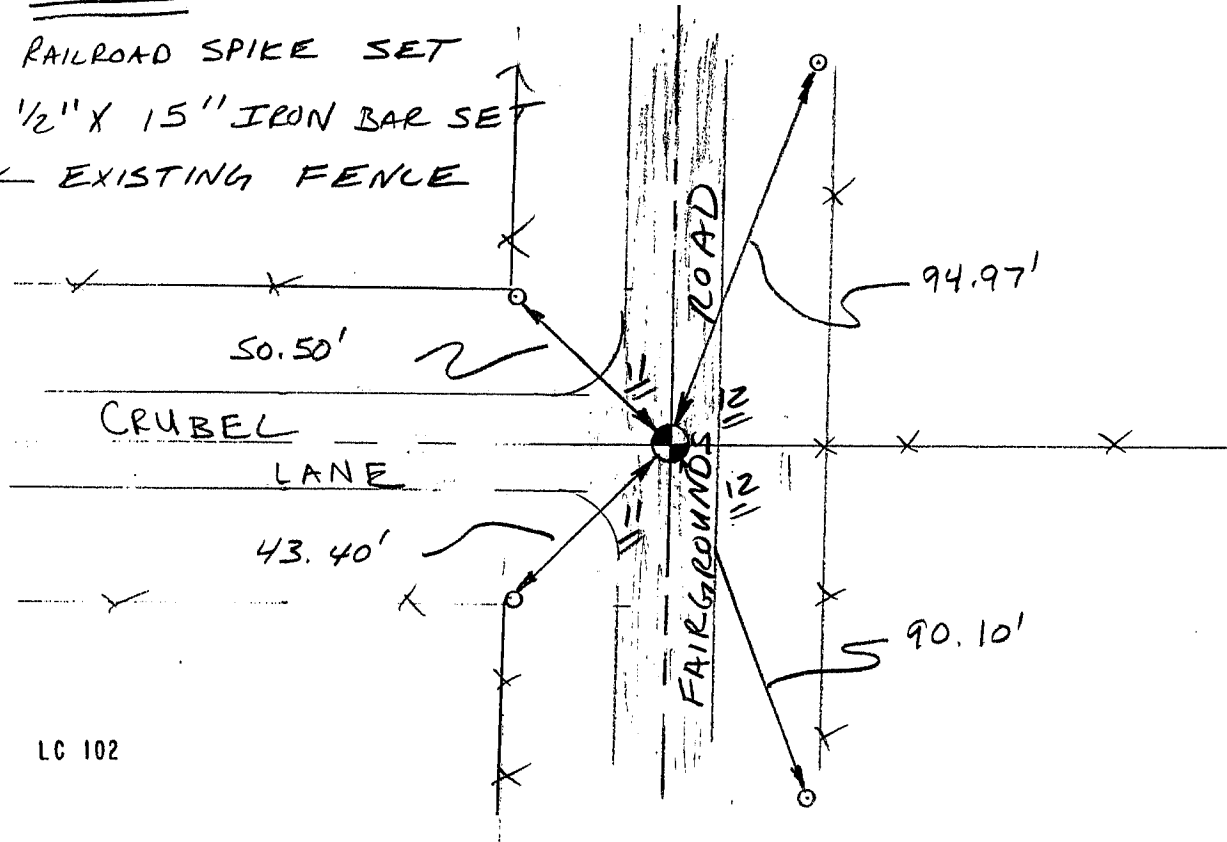
DATE: 1-27-97

TIE SKETCH

Show at least three (3) ties and monument

LEGEND

- RAILROAD SPIKE SET
- 1/2" X 15" IRON BAR SET
- EXISTING FENCE



No SCALE