

U.S. PUBLIC LAND SURVEY MONUMENT RECORD - GRANT COUNTY, WI

Section 11, Town 5 North Range 5 West, Town of Patch Grove (a)

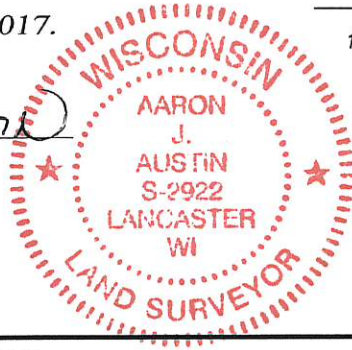
NOTE: This form is intended and designed to fulfill all requirements of the Wisconsin Administrative Code Chapter A-E 7.08, U.S. Public Land Survey Monument Record (3) (a) (b) (c) (d) (e) (f) (g) (h) (i).

CERTIFICATE: (i)

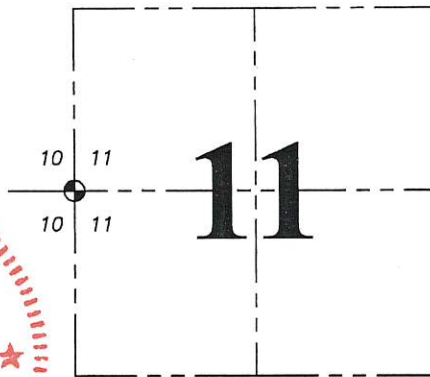
I, Aaron J. Austin, Wisconsin Professional Land Surveyor, do hereby certify that the corner location on this record was determined by me and/or under my direct supervision and that this U.S. Public Land Survey Monument Record is correct and complete to the best of my knowledge and belief.

Dated this 3rd day of January, 2017.

Aaron J. Austin
 Aaron J. Austin, S-2922



Corner No. 038



● = CORNER LOCATION

Grant County Coordinates:
 NAD 83 (2011)
 Northing: 551,285.26
 Easting: 756,949.06

HISTORY OF CORNER ESTABLISHMENT:

1832 - Robert Clark set the original corner.
 1854 - John Clark tied to the corner on a Survey filed in Book C, Page 64, 65 and 66.
 No other record was found for the corner.

DESCRIPTION OF CORNER EVIDENCE FOUND: (b) (f) (g) (h)

I found and accepted an existing fence corner.
 Location was verified with G.P.S. and E.D.M. methods.

DESCRIPTION OF CORNER AND WITNESS MONUMENTS, references and accessories used to perpetuate the original or re-established location of this corner. (c) (d) (e)
 Witnesses to corner location Shane Austin.

SKETCH:

LEGEND

- Section Corner—as designated
- 3/4" x 18" rebar set
- x-x-x- Existing fence

- F I E L D -

