

**U.S. PUBLIC LAND SURVEY MONUMENT RECORD - GRANT COUNTY, WI**

Section 4, Town 5 North Range 5 West, Town of Patch Grove (a)

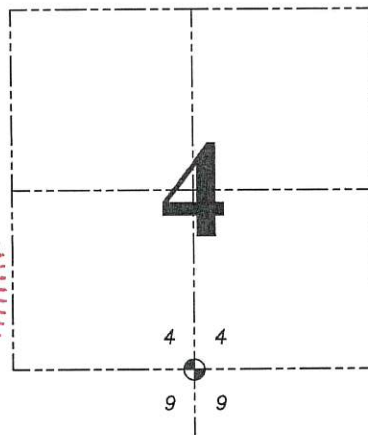
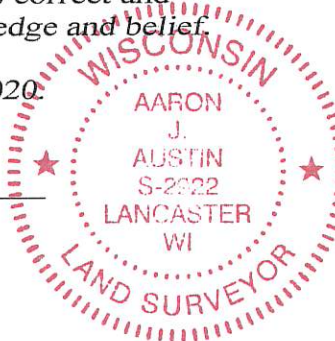
NOTE: This form is intended and designed to fulfill all requirements of the Wisconsin Administrative Code Chapter A-E 7.08, U.S. Public Land Survey Monument Record (3) (a) (b) (c) (d) (e) (f) (g) (h) (i).

**CERTIFICATE: (i)**

I, Aaron J. Austin, Wisconsin Professional Land Surveyor, do hereby certify that the corner location on this record was determined by me and/or under my direct supervision and that this U.S. Public Land Survey Monument Record is correct and complete to the best of my knowledge and belief.

Dated this 6th day of February, 2020.

*Aaron J. Austin*  
 Aaron J. Austin, S-2922



⊕ = CORNER LOCATION

Grant County Coordinates:  
 NAD 83 (2011)  
 Northing: 553,988.19  
 Easting: 748,899.26

HISTORY OF CORNER ESTABLISHMENT:

Original corner was set in 1832 by Robert Clark.  
 Richard Talarczyk set a Aluminum Monument and prepared a Survey Monument Record dated 12/19/1981.

DESCRIPTION OF CORNER EVIDENCE FOUND: (b) (f) (g) (h)

I found the Aluminum Monument and one witness corner. I set three additional witness corners after I verified the Monment's location with G.P.S. and E.D.M. methods.

DESCRIPTION OF CORNER AND WITNESS MONUMENTS, references and accessories used to perpetuate the original or re-established location of this corner. (c) (d) (e)

Witnesses to corner location Shane Austin, Owen Austin.  
 Drawn by: Owen Austin

SKETCH:

**LEGEND**

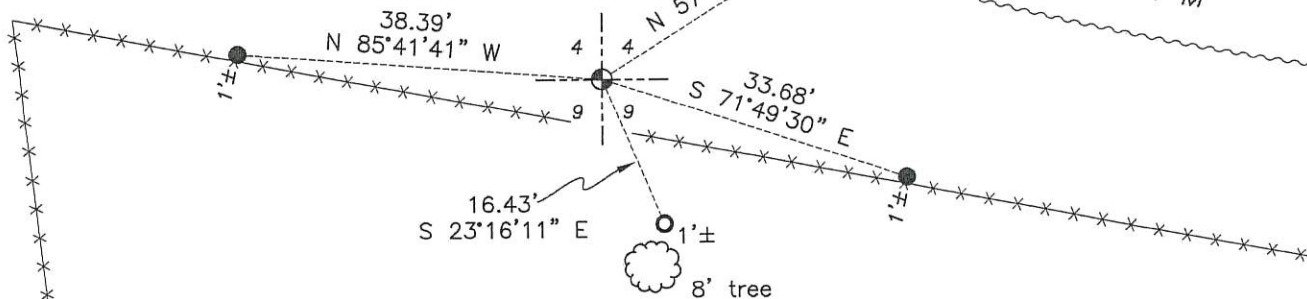
- ⊕ Section Corner—as designated
- 1 1/4" rebar found
- 3/4" x 18" rebar set
- ☉ Existing tree
- x-x-x- Existing fence

F I E L D



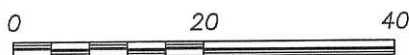
B E R M

SOUTH 1/4 CORNER SECTION 4, T5N R5W Aluminum Monument found.



B E R M

P A S T U R E



SCALE 1" = 20'

RECORD OF U.S. PUBLIC LAND SURVEY CONTROL STATION

SECTION CORNER  $\frac{4}{9}$  TOWNSHIP 5 N, RANGE 5W, GRANT COUNTY, WISCONSIN

METRIC SURVEY BY: \_\_\_\_\_

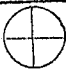

STATE PLANE COORDINATES OF: \_\_\_\_\_  
NORTH \_\_\_\_\_  
EAST \_\_\_\_\_

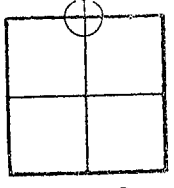
LOCATION OF STATION: \_\_\_\_\_ THETA ANGLE: \_\_\_\_\_

HORIZONTAL DATUM: WISCONSIN STATE PLANE COORDINATE SYSTEM, SOUTH ZONE

VERTICAL DATUM: MEAN SEA LEVEL, 1929 ADJUSTMENT

HORIZONTAL & VERTICAL CONTROL ACCURACY: SECOND ORDER

LEGEND:  CAST ALUM. MONUMENT SET.  
 1-1/4" x 30" SOLID RD. IRON ROD SET,  
WEIGH. 4.30 LBS./LINEAL FT.  
SCALE: 1" = 30'

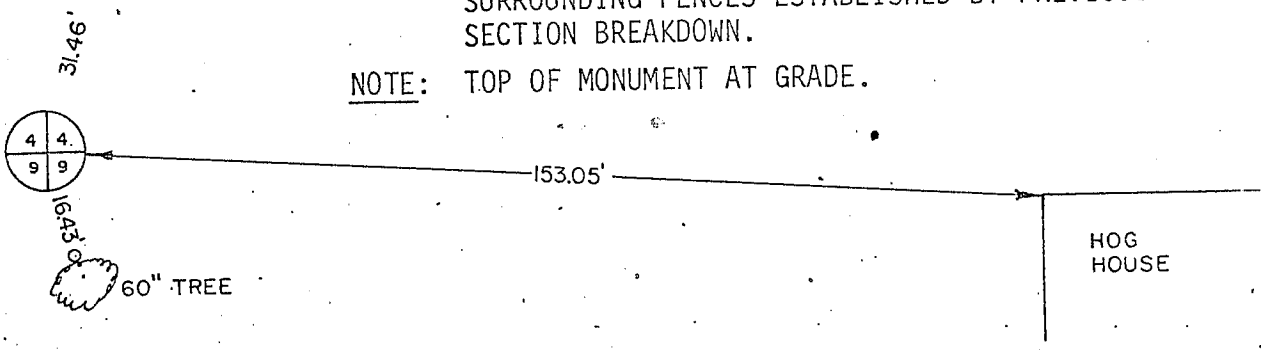


SEC. 9

TOP OF BERM

NOTE: CORNER SET BY PROPORTIONATE MEASUREMENT & EXISTING PHYSICAL EVIDENCE. PHYSICAL EVIDENCE CONSISTS OF SURROUNDING FENCES ESTABLISHED BY PREVIOUS SECTION BREAKDOWN.

NOTE: TOP OF MONUMENT AT GRADE.

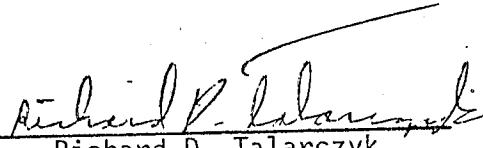


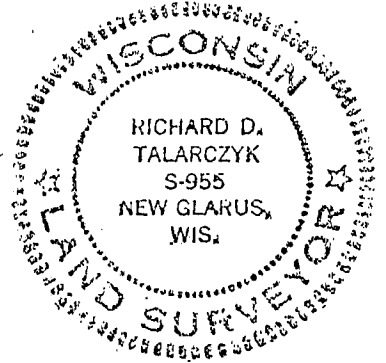
DEVELOPER'S AFFIDAVIT:

STATE OF WISCONSIN) SS  
GRANT COUNTY)

I HEREBY CERTIFY THAT I, RICHARD D. TALARCZYK, HAVE COMPLIED WITH THE WISCONSIN STATUTES, STATUTES OF THE UNITED STATES, AND THE RULES AND REGULATIONS OF THE SECRETARY OF THE INTERIOR IN THE LOCATION OF THE CORNER SHOWN ABOVE.

DATE OF SURVEY: 10-14-81 to 12-19-81

  
Richard D. Talarczyk



DEC 30 1981

