

55023

U.S. PUBLIC LAND SURVEY MONUMENT RECORD - GRANT COUNTY, WI

Section 1, Town 5 North Range 5 West, Town of Patch Grove (a)

NOTE: This form is intended and designed to fulfill all requirements of the Wisconsin Administrative Code Chapter A-E 7.08, U.S. Public Land Survey Monument Record (3) (a) (b) (c) (d) (e) (f) (g) (h) (i).

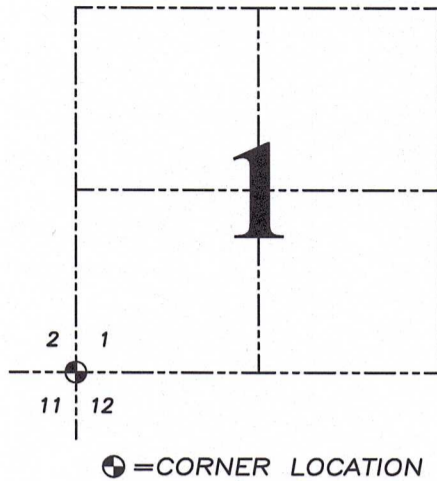
CERTIFICATE: (i)

I, Aaron J. Austin, Wisconsin Professional Land Surveyor, do hereby certify that the corner location on this record was determined by me and/or under my direct supervision and that this U.S. Public Land Survey Monument Record is correct and complete to the best of my knowledge and belief.

Dated this 23rd day of April, 2026.

Aaron J. Austin (signature)

Aaron J. Austin, PLS-2922



Grant County Coordinates: NAD 83 (2011) Northing: 553,915.04 Easting: 762,194.08

HISTORY OF CORNER ESTABLISHMENT:

Original corner was set in 1832 by Robert Clark. Larry Austin set a Railroad Spike and prepared a Survey Monument Record dated 1-27-1997. I set a Cotton Gin Spike and prepared a Survey Monument Record dated 1-3-2017.

DESCRIPTION OF CORNER EVIDENCE FOUND: (b) (f) (g) (h)

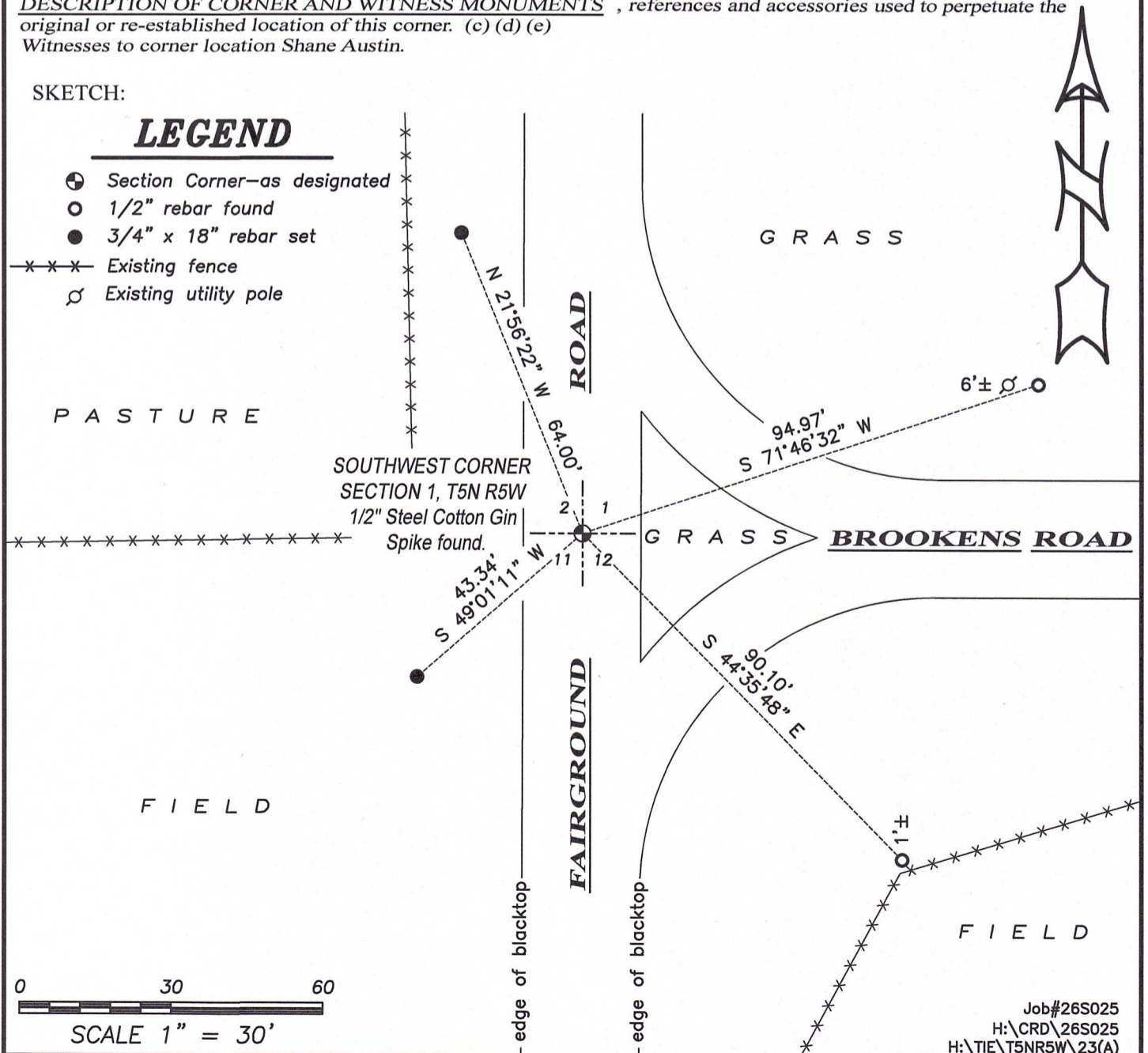
I found the 1/2" Steel Cotton Gin Spike I set in 2017. I found two witness corners and set two additional. The Corner's location was verified with G.P.S. and E.D.M. methods.

DESCRIPTION OF CORNER AND WITNESS MONUMENTS, references and accessories used to perpetuate the original or re-established location of this corner. (c) (d) (e) Witnesses to corner location Shane Austin.

SKETCH:

LEGEND

- Section Corner-as designated
1/2" rebar found
3/4" x 18" rebar set
Existing fence
Existing utility pole



U.S. PUBLIC LAND SURVEY MONUMENT RECORD - GRANT COUNTY, WI

Section 11, Town 5 North Range 5 West, Town of Patch Grove (a)

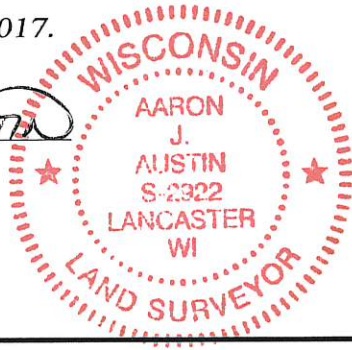
NOTE: This form is intended and designed to fulfill all requirements of the Wisconsin Administrative Code Chapter A-E 7.08, U.S. Public Land Survey Monument Record (3) (a) (b) (c) (d) (e) (f) (g) (h) (i).

CERTIFICATE: (i)

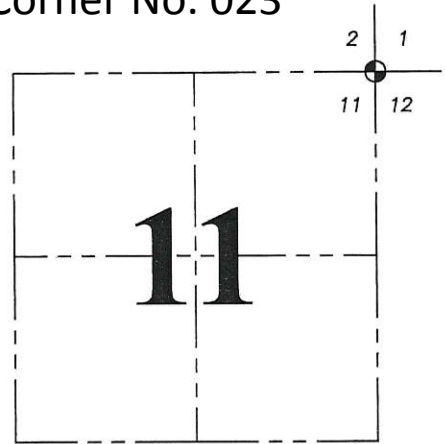
I, Aaron J. Austin, Wisconsin Professional Land Surveyor, do hereby certify that the corner location on this record was determined by me and/or under my direct supervision and that this U.S. Public Land Survey Monument Record is correct and complete to the best of my knowledge and belief.

Dated this 3rd day of January, 2017.

Aaron J. Austin
 Aaron J. Austin, S-2922



Corner No. 023



⊕ = CORNER LOCATION

Grant County Coordinates:
 NAD 83 (2011)
 Northing: 553,915.04
 Easting: 762,194.08

HISTORY OF CORNER ESTABLISHMENT:

1832 - Robert Clark set the original corner.
 1997 - Larry Austin reset the corner and prepared a Survey Monument Record.

DESCRIPTION OF CORNER EVIDENCE FOUND: (b) (f) (g) (h)

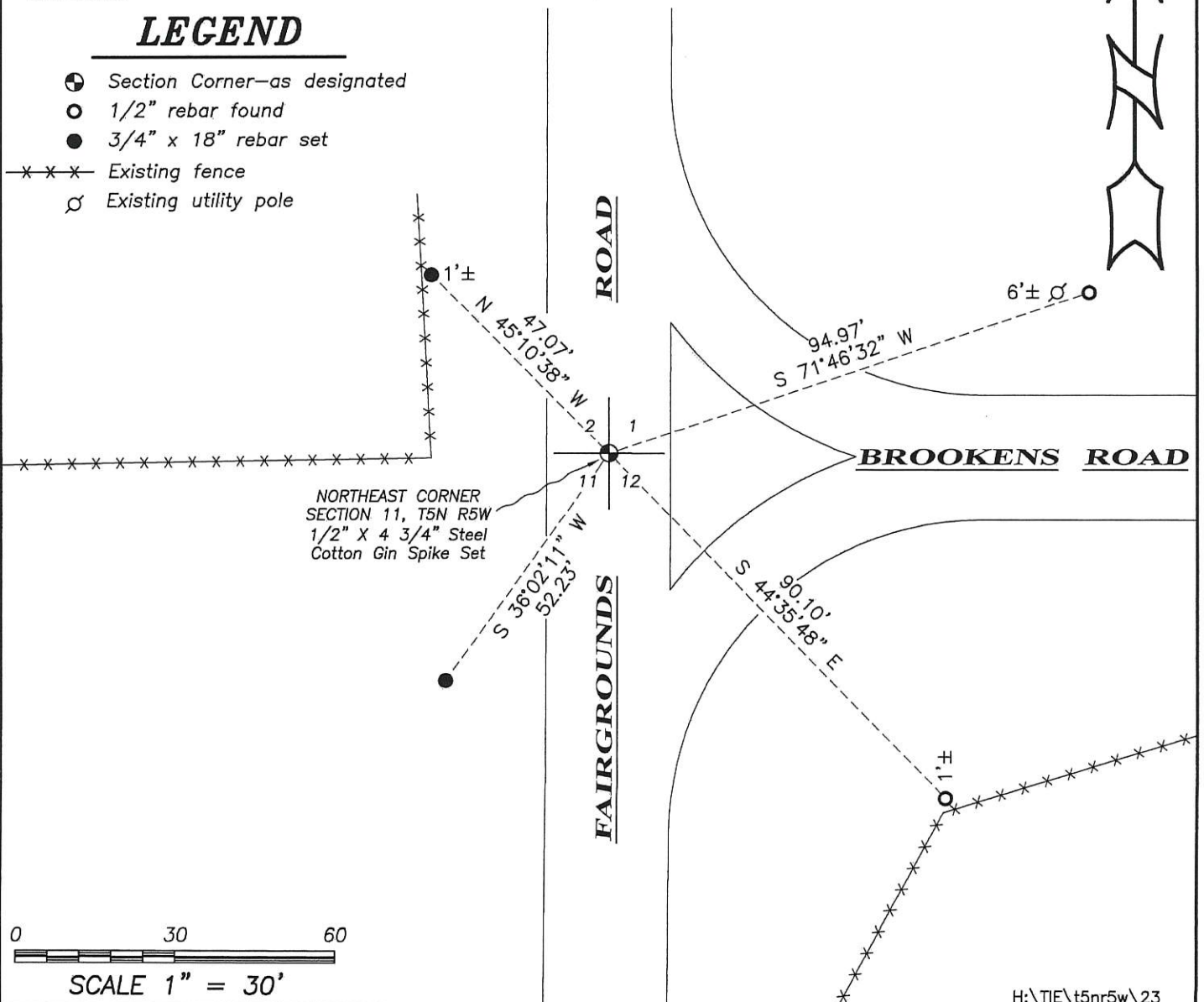
I found two witness corners from Larry Austin's tie sheet. I reset the corner based upon these ties and set two additional witness corners as shown below. Location was verified with G.P.S. and E.D.M. methods.

DESCRIPTION OF CORNER AND WITNESS MONUMENTS, references and accessories used to perpetuate the original or re-established location of this corner. (c) (d) (e)
 Witnesses to corner location Shane Austin.

SKETCH:

LEGEND

- ⊕ Section Corner—as designated
- 1/2" rebar found
- 3/4" x 18" rebar set
- x-x-x- Existing fence
- ⊘ Existing utility pole

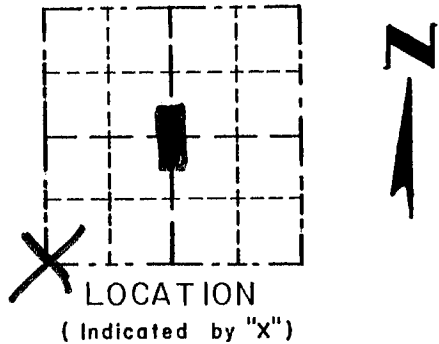


Survey Monument Record

TYPE OF MONUMENT RAILROAD SPIKE
SET

CORNER NO. 23
SECTION 1
TOWN SN
RANGE SW

FIELD BOOK: 96-18
PAGE 25



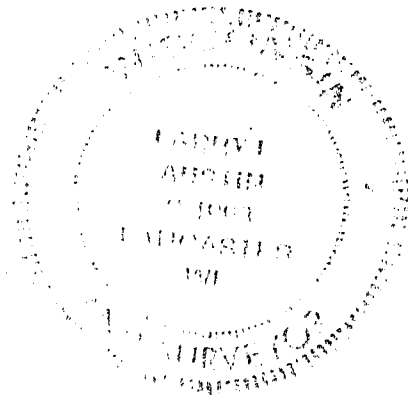
BASIS FOR MONUMENT LOCATION

(Use reverse side if necessary)

Show info such as: History of corner, with reference to Vol. and pg., dates, surveyor; exact description of monument replaced; if location computed, by taped or EDM traverse; landowner, remarks, etc.

SEAL:

CORNER SET IN 1832 BY ROBERT CLARK. NO RECORD OF CORNER FOUND SINCE ORIGINAL SURVEYS. CORNER WAS SET IN CENTERLINE OF FAIRGROUNDS ROAD FOR EASTING. FOR NORTHING A FENCE WEST WAS USED. VERIFIED ITS LOCATION USING EDM METHODS.



CERTIFIED CORRECT

Randy J. Burt
Registered Land Surveyor

DATE: 1-27-97

TIE SKETCH

Show at least three (3) ties and monument

LEGEND

- ⊕ RAILROAD SPIKE SET
- 1/2" X 15" IRON BAR SET
- *** EXISTING FENCE

