

U.S. PUBLIC LAND SURVEY MONUMENT RECORD - GRANT COUNTY, WI

Section 1, Town 5 North Range 5 West, Town of Patch Grove (a)

NOTE: This form is intended and designed to fulfill all requirements of the Wisconsin Administrative Code Chapter A-E 7.08, U.S. Public Land Survey Monument Record (3) (a) (b) (c) (d) (e) (f) (g) (h) (i).

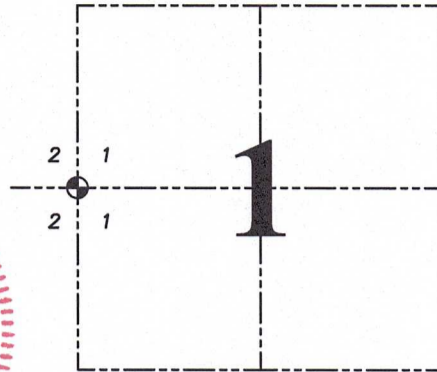
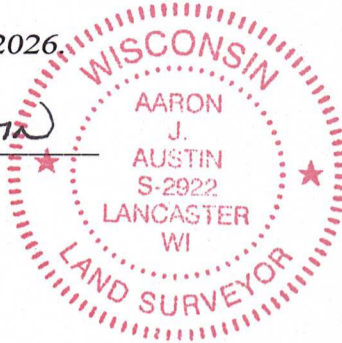
CERTIFICATE: (i)

I, Aaron J. Austin, Wisconsin Professional Land Surveyor, do hereby certify that the corner location on this record was determined by me and/or under my direct supervision and that this U.S. Public Land Survey Monument Record is correct and complete to the best of my knowledge and belief.

Dated this 23rd day of April, 2026.

Aaron J. Austin

Aaron J. Austin, PLS-2922



⊕ = CORNER LOCATION

Grant County Coordinates:
NAD 83 (2011)
Northing: 556,579.55
Easting: 762,152.51

HISTORY OF CORNER ESTABLISHMENT:

Original corner was set in 1832 by Robert Clark.
Larry Austin set a Railroad Spike and prepared a Survey Monument Record dated 1-27-1997.

DESCRIPTION OF CORNER EVIDENCE FOUND: (b) (f) (g) (h)

I found the Railroad Spike and one witness corner Larry set. I set three witness corners and verified the Monument's location with G.P.S. and E.D.M. methods.

DESCRIPTION OF CORNER AND WITNESS MONUMENTS, references and accessories used to perpetuate the original or re-established location of this corner. (c) (d) (e)

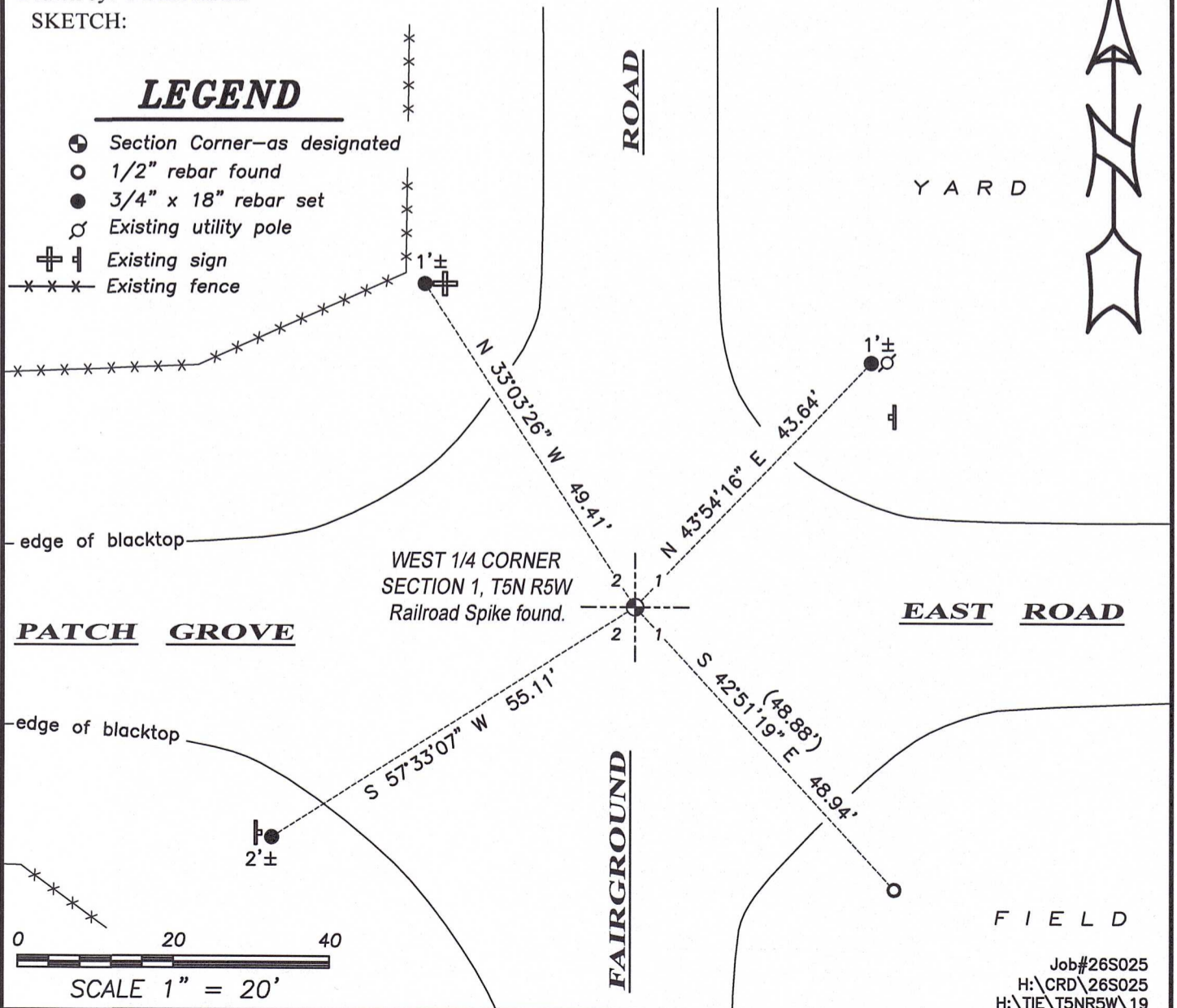
Witnesses to corner location Tanner Austin.

Drawn by: Owen Austin.

SKETCH:

LEGEND

- ⊕ Section Corner—as designated
- 1/2" rebar found
- 3/4" x 18" rebar set
- ⊕ Existing utility pole
- ⊕ Existing sign
- *** Existing fence

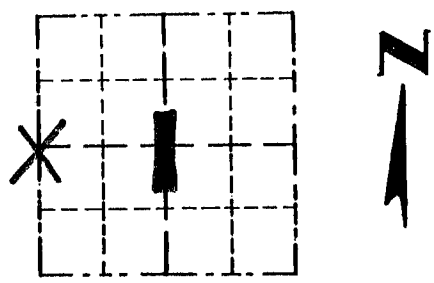


Survey Monument Record

TYPE OF MONUMENT RAILROAD SPIKE
SET

CORNER NO. 19
SECTION 1
TOWN SN
RANGE SW

FIELD BOOK: 96-18
PAGE (25)

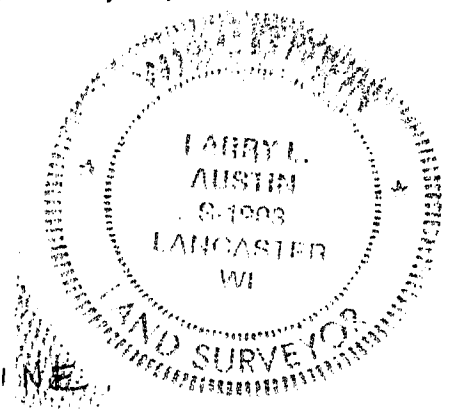


LOCATION
(Indicated by "X")

BASIS FOR MONUMENT LOCATION

(Use reverse side if necessary)
Show info such as: History of corner, with reference to Vol. and pg., dates, surveyor; exact description of monument replaced; if location computed, by taped or EDM traverse; landowner, remarks, etc.

SEAL:



CORNER SET IN 1832 BY ROBERT CLARK, NO RECORD OF CORNER FOUND SINCE ORIGINAL SURVEYS. CORNER WAS SET AT OCCUPIED LOCATION CENTERLINE / CENTERLINE. VERIFIED ITS LOCATION USING EDM METHODS.

CERTIFIED CORRECT
Larry L. Austin
Registered Land Surveyor
DATE: 1-27-97

TIE SKETCH

Show at least three (3) ties and monument

