

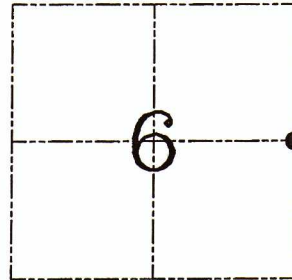
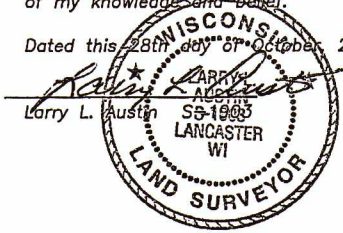
U.S. PUBLIC LAND SURVEY MONUMENT RECORD – GRANT COUNTY, WI

Section 6, Town 5 North Range 5 West, Town of Patch Grove

CERTIFICATE

I, Larry L. Austin, do hereby certify that the corner location on this record was determined by me and/or under my direct supervision and that this U.S. public land survey monument record is correct and complete to the best of my knowledge and belief.

Dated this 28th day of October, 2005



● = CORNER LOCATION

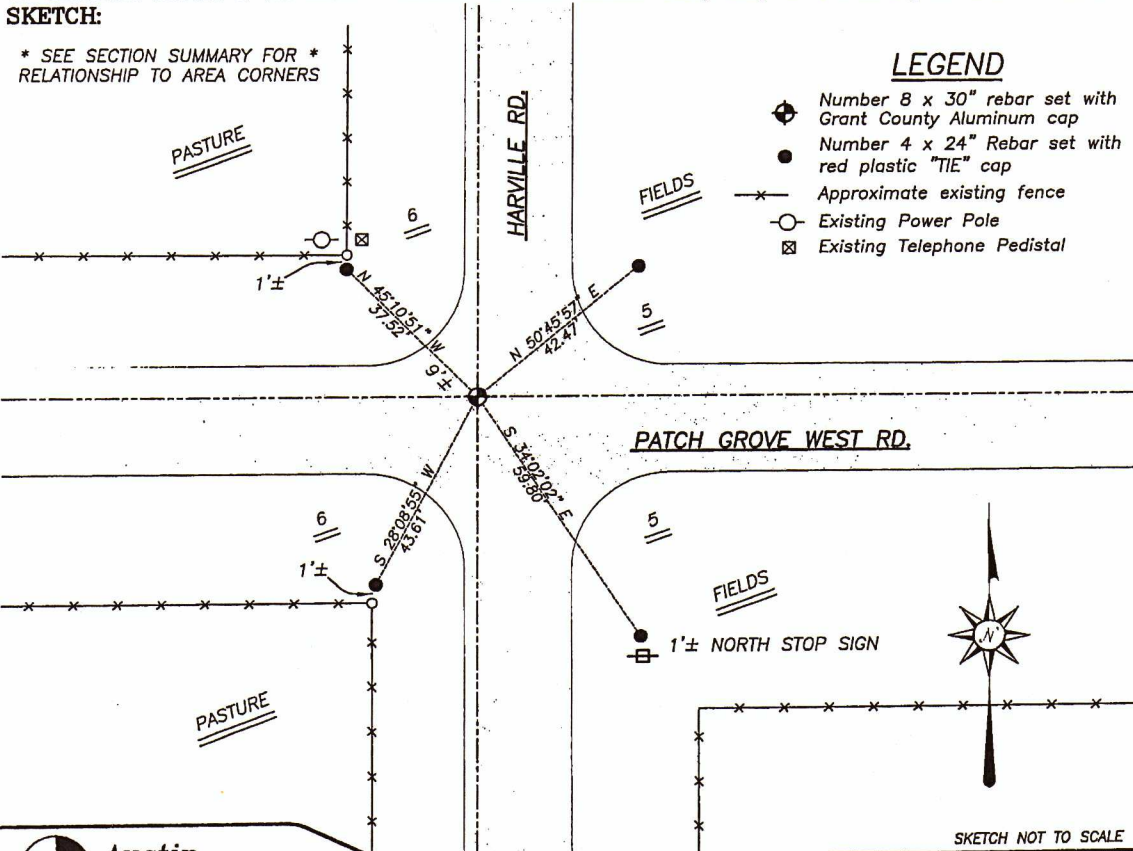
HISTORY OF CORNER ESTABLISHMENT

Corner was originally set in 1832 by Clark. In 1894 & 1899 Sampson measured to the corner. No other record of the corner was found.

DESCRIPTION OF CORNER EVIDENCE FOUND

I reset the corner proportionately to Sampson's survey and on-line with occupational evidence projected from the South. Verified this location using EDM & GPS methods.

DESCRIPTION OF CORNER AND WITNESS MONUMENTS, references and accessories used to perpetuate the original or re-established location of this corner. Witnesses to corner location Bobby Sedgwick & Brad Digman & Shane Austin



Austin Engineering LLC
 4211 HWY 81 E, LANCASTER, WI 53813
 PHONE 608-723-6363 FAX 608-723-6702

JOB NUMBER 05S168
 FIELDBOOK: TDSR, 2516
 G:\T5NR6W\01
 H:\TIE\T5NR5W\15

DRAWN BY: BJ HAZEN
 APPROVED: LL AUSTIN