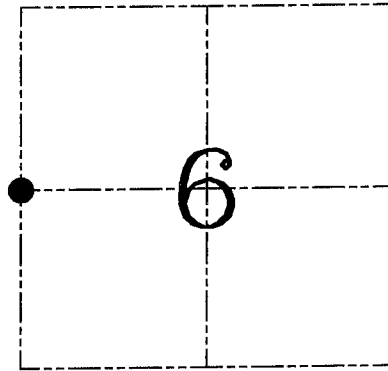
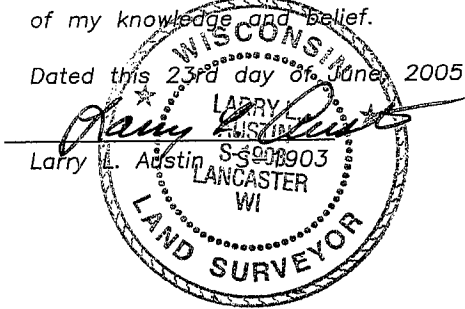


**U.S. PUBLIC LAND SURVEY MONUMENT RECORD – GRANT COUNTY, WI**  
**Section 6, Town 5 North Range 5 West, Town of Patch Grove**

CERTIFICATE

I, Larry L. Austin, do hereby certify that the corner location on this record was determined by me and/or under my direct supervision and that this U.S. public land survey monument record is correct and complete to the best of my knowledge and belief.

Dated this 23<sup>rd</sup> day of June, 2005



● = CORNER LOCATION

HISTORY OF CORNER ESTABLISHMENT

Corner was originally set in 1899 by Sampson.  
 No other record of the corner was found.

DESCRIPTION OF CORNER EVIDENCE FOUND

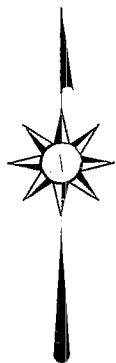
I reset the corner at the recorded offset and on-line between the Northeast corner and East 1/4 corner of Section 1, T5N R6W. Verified this location using EDM & GPS methods.

DESCRIPTION OF CORNER AND WITNESS MONUMENTS, references and accessories used to perpetuate the original or re-established location of this corner. Witnesses to corner location Bobby Sedgwick & Brad Digman & Shane Austin

**SKETCH:**

LEGEND

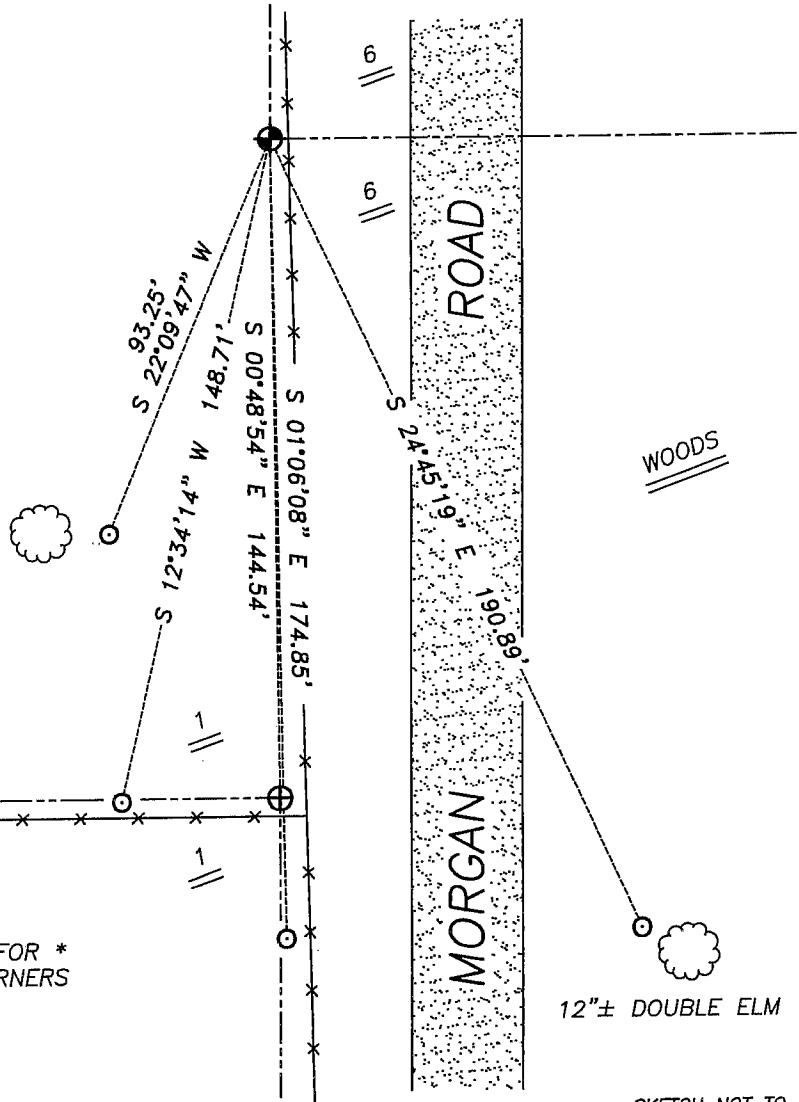
- ⊕ Number 8 x 30" rebar set with Grant County Aluminum cap
- ⊕ No. 8 rebar found with Grant County Aluminum Cap
- x— Approximate existing fence
- ⊙ No. 4 rebar found



2"± EAST 7" APPLE

PASTURE

\* SEE SECTION SUMMARY FOR \*  
 RELATIONSHIP TO AREA CORNERS



SKETCH NOT TO SCALE



**Austin Engineering LLC**

4211 HWY 81 E, LANCASTER, WI 53813  
 PHONE 608-723-6363 FAX 608-723-6702

JOB NUMBER 05S168  
 FIELDBOOK: TDSR, 2516  
 G:\T5NR6W\01  
 H:\TIE\T5NR5W\14

DRAWN BY: SW AUSTIN  
 APPROVED: LL AUSTIN