

# U.S. PUBLIC LAND SURVEY MONUMENT RECORD - GRANT COUNTY, WI

Section 4, Town 5 North Range 5 West, Town of Patch Grove (a)

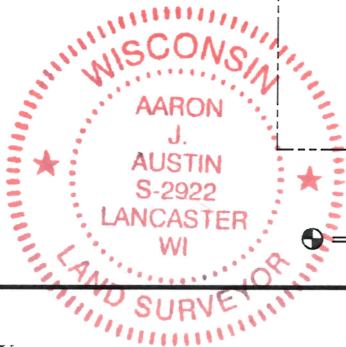
NOTE: This form is intended and designed to fulfill all requirements of the Wisconsin Administrative Code Chapter A-E 7.08, U.S. Public Land Survey Monument Record (3) (a) (b) (c) (d) (e) (f) (g) (h) (i).

**CERTIFICATE:** (i)

I, Aaron J. Austin, Wisconsin Professional Land Surveyor, do hereby certify that the corner location on this record was determined by me and/or under my direct supervision and that this U.S. Public Land Survey Monument Record is correct and complete to the best of my knowledge and belief.

Dated this 18th day of November, 2024.

*Aaron J. Austin*  
Aaron J. Austin, S-2922



⊕ = CORNER LOCATION

Grant County Coordinates:  
NAD 83 (2011)  
Northing: 559,208.91  
Easting: 748,817.13

**HISTORY OF CORNER ESTABLISHMENT:**

Original corner was set in 1832 by Sibley.  
Bruce Bowden set a railroad spike on a Survey dated 3/7/1987 and prepared a Survey Monument Record.  
I found an Aluminum Monument and prepared a Survey Monument Record dated 9-12-2019.

**DESCRIPTION OF CORNER EVIDENCE FOUND:** (b) (f) (g) (h)

I found an Aluminum Monument before the road construction of Highway "35". After the road construction I set a 1/2" x 4 3/4" Steel Cotton Gin Spike. I found four witness corners after I verified the Monument's location with G.P.S. and E.D.M. methods.

**DESCRIPTION OF CORNER AND WITNESS MONUMENTS,** references and accessories used to perpetuate the original or re-established location of this corner. (c) (d) (e)  
Witnesses to corner location Tanner Austin, Owen Austin.  
Drawn by: Owen Austin

SKETCH:

## LEGEND

- ⊕ Section Corner—as designated
- 3/8" rebar found
- ⊙ 3/4" Rebar found
- x-x-x- Existing fence
- ⊘ Existing utility pole
- ( ) Recorded as

Concrete Driveway

Gravel Driveway

Concrete Driveway

YARD

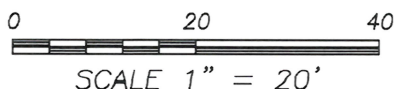
STATE H.W.Y.

FIELD

Gravel Driveway

FIELD

NORTH 1/4 CORNER  
SECTION 4, T5N R5W  
1/2" x 4 3/4" Steel  
Cotton Gin Spike set.



U.S. PUBLIC LAND SURVEY MONUMENT RECORD - GRANT COUNTY, WI

Section 4, Town 5 North Range 5 West, Town of Patch Grove (a)

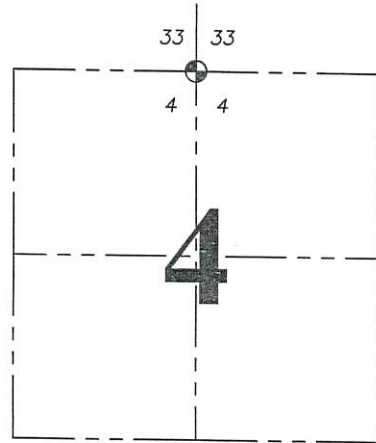
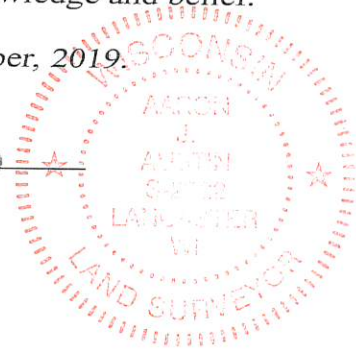
NOTE: This form is intended and designed to fulfill all requirements of the Wisconsin Administrative Code Chapter A-E 7.08, U.S. Public Land Survey Monument Record (3) (a) (b) (c) (d) (e) (f) (g) (h) (i).

CERTIFICATE: (i)

I, Aaron J. Austin, Wisconsin Professional Land Surveyor, do hereby certify that the corner location on this record was determined by me and/or under my direct supervision and that this U.S. Public Land Survey Monument Record is correct and complete to the best of my knowledge and belief.

Dated this 12th day of September, 2019.

Aaron J. Austin (signature)
Aaron J. Austin, S-2922



⊕ = CORNER LOCATION

Grant County Coordinates:
NAD 83 (2011)
Northing: 559,208.91
Easting: 748,817.13

HISTORY OF CORNER ESTABLISHMENT:

Original corner was set in 1832 by Sibley. Bruce Bowden set a railroad spike on a Survey dated 3/7/1987 and prepared a Survey Monument Record.

DESCRIPTION OF CORNER EVIDENCE FOUND: (b) (f) (g) (h)

I found a monument along with one witness corner established by Bowden. I set three additional witness corners after I verified the Monument's location with G.P.S. and E.D.M. methods.

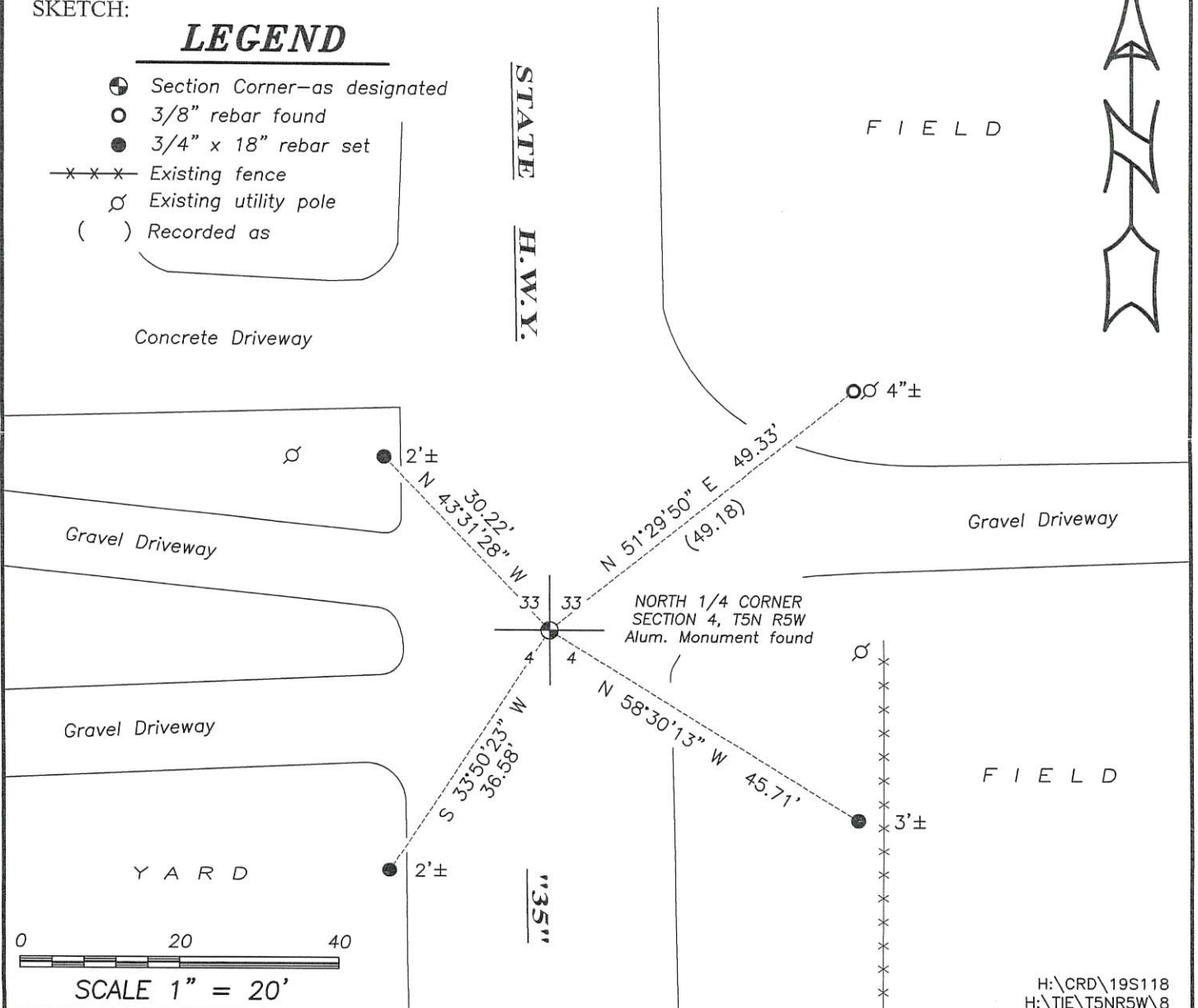
DESCRIPTION OF CORNER AND WITNESS MONUMENTS, references and accessories used to perpetuate the original or re-established location of this corner. (c) (d) (e)

Witnesses to corner location Shane Austin, Owen Austin. Drawn by: Owen Austin

SKETCH:

LEGEND

- ⊕ Section Corner—as designated
○ 3/8" rebar found
● 3/4" x 18" rebar set
-x-x-x Existing fence
⊕ Existing utility pole
( ) Recorded as

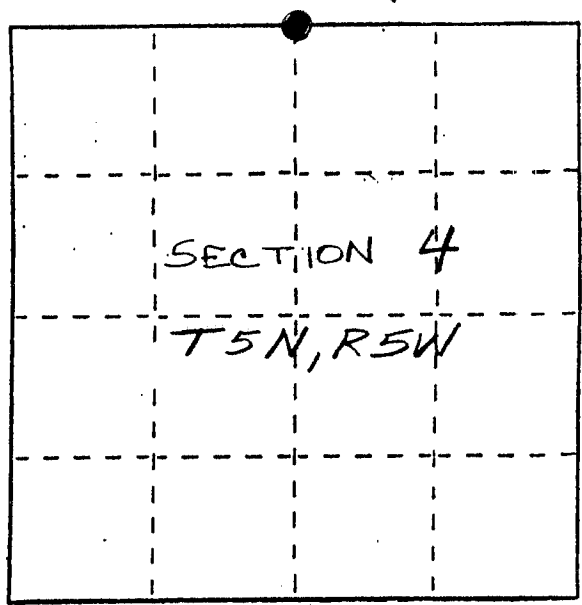


# U. S. PUBLIC LAND SURVEY MONUMENT RECORD

INSTRUCTIONS: This record shall show the location of the corner and shall include all of the following nine elements (a through i).

- (a) Identify the corner by reference to the U.S. public land survey system.
- = Corner monument restored.

NORTH 1/4 CORNER  
 SEC 4, TEN, RE.W  
 PATCH GROVE TWP.,  
 GRANT CO., WI



- (b) Describe any record evidence, monument evidence, occupational evidence, testimonial evidence or any other material evidence you considered, and whether the monument was found or placed.

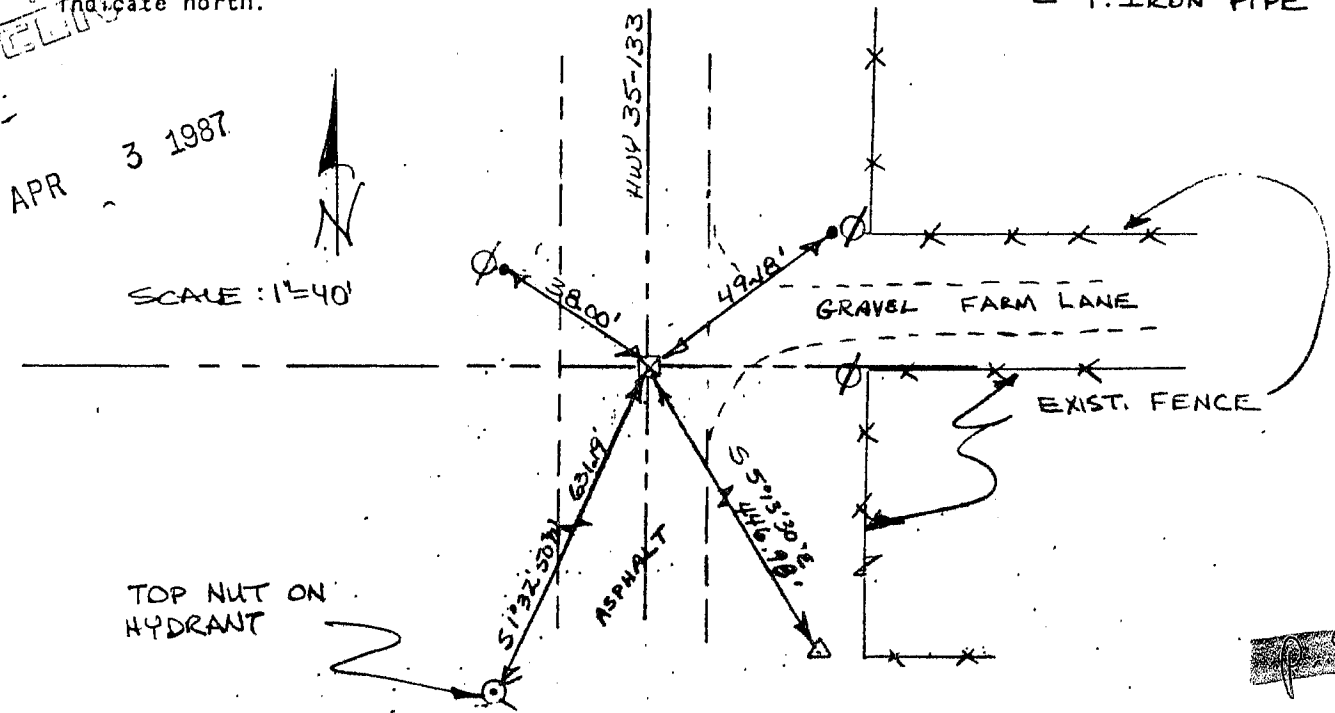
MONUMENT SET FROM TIES TO A 1916 SURVEY BY J.C. SCOTT, A 1960 SURVEY BY HOMER RALPH, AND A 1977 SURVEY BY DAVID DAVIS. OLD MONUMENT APPARENTLY DISTURBED DURING A PREVIOUS PAVING OPERATION.

- (c) In the plan view drawing below, provide reference ties to at least 4 witness monuments, or, if the location is within a municipality, to at least 2 witness monuments. (Witness monuments shall be made of concrete, natural stone, iron or other equally durable material.) Describe witness monuments.

- (d) Show a plan view drawing depicting the relevant monuments and reference ties which is sufficient in detail to enable accurate relocation of the corner monument if the corner monument is disturbed. Indicate north.

### LEGEND

- ∅ EXIST. POWER POLE
- 3/8" X 24" SOLID ROD
- ⊠ R.R. SPIKE SET IN ASPHALT
- △ 1" IRON PIPE



APR 3 1987

SCALE: 1"=40'

TOP NUT ON HYDRANT

8