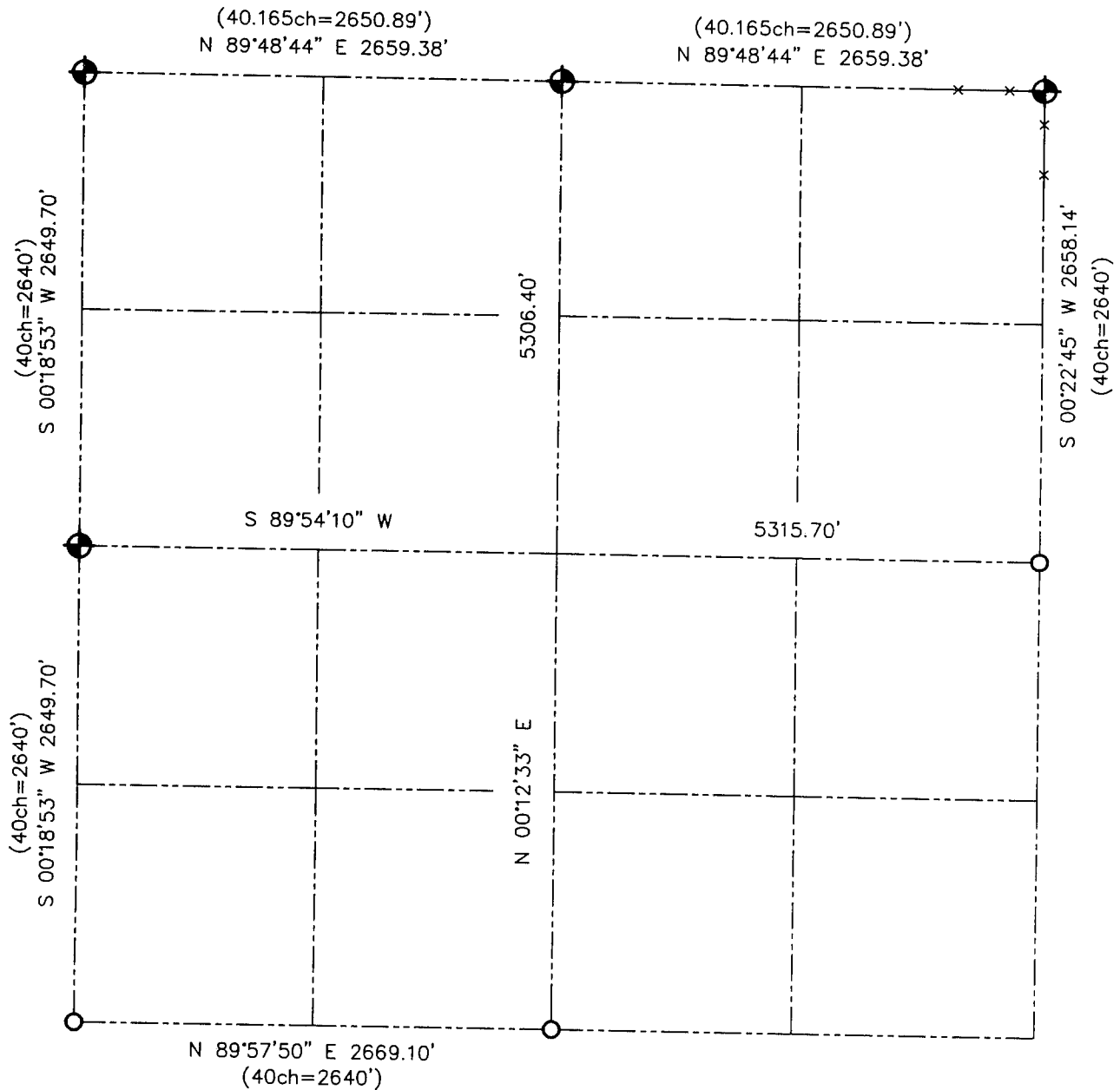





**U.S. PUBLIC LAND SURVEY MONUMENT RECORD - GRANT COUNTY, WI**  
 Summary of Section 28, Town 5 North Range 4 West, Town of Little Grant



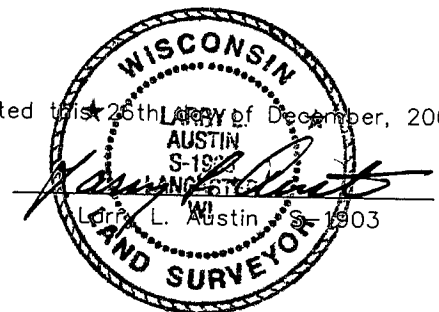
**LEGEND**

-  NUMBER 8 x 30" REBAR SET WITH GRANT COUNTY ALUMINUM CAP
-  NUMBER 6 REBAR FOUND
-  RECORDED AS



Relationship of all section corners to other section corners shall be shown hereon by bearing and distance or grid coordinates. Bearing reference shown below.

Dated this 26th day of December, 2001



Bearings referenced to the North-South 1/4 line of Section 28, which is assumed to bear N 00°12'33" E.

SKETCH NOT TO SCALE

**AUSTIN ENGINEERING, LLC**

4211 HWY 81 EAST, LANCASTER, WI 53813  
 PHONE 608-723-6363 FAX 608-723-6702

FIELDBOOK: SDR33, 2119  
 G: \T5NR4W\28  
 C: \SWA\TIE\T5NR4W\28SUM

CREW: BS-SB-SA-BD  
 DRAWN BY: SW AUSTIN  
 APPROVED: LL AUSTIN