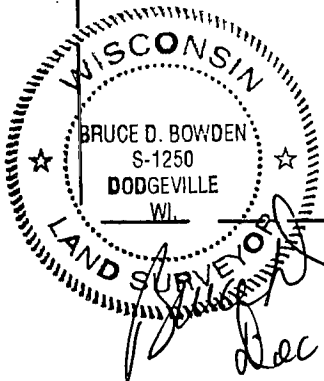
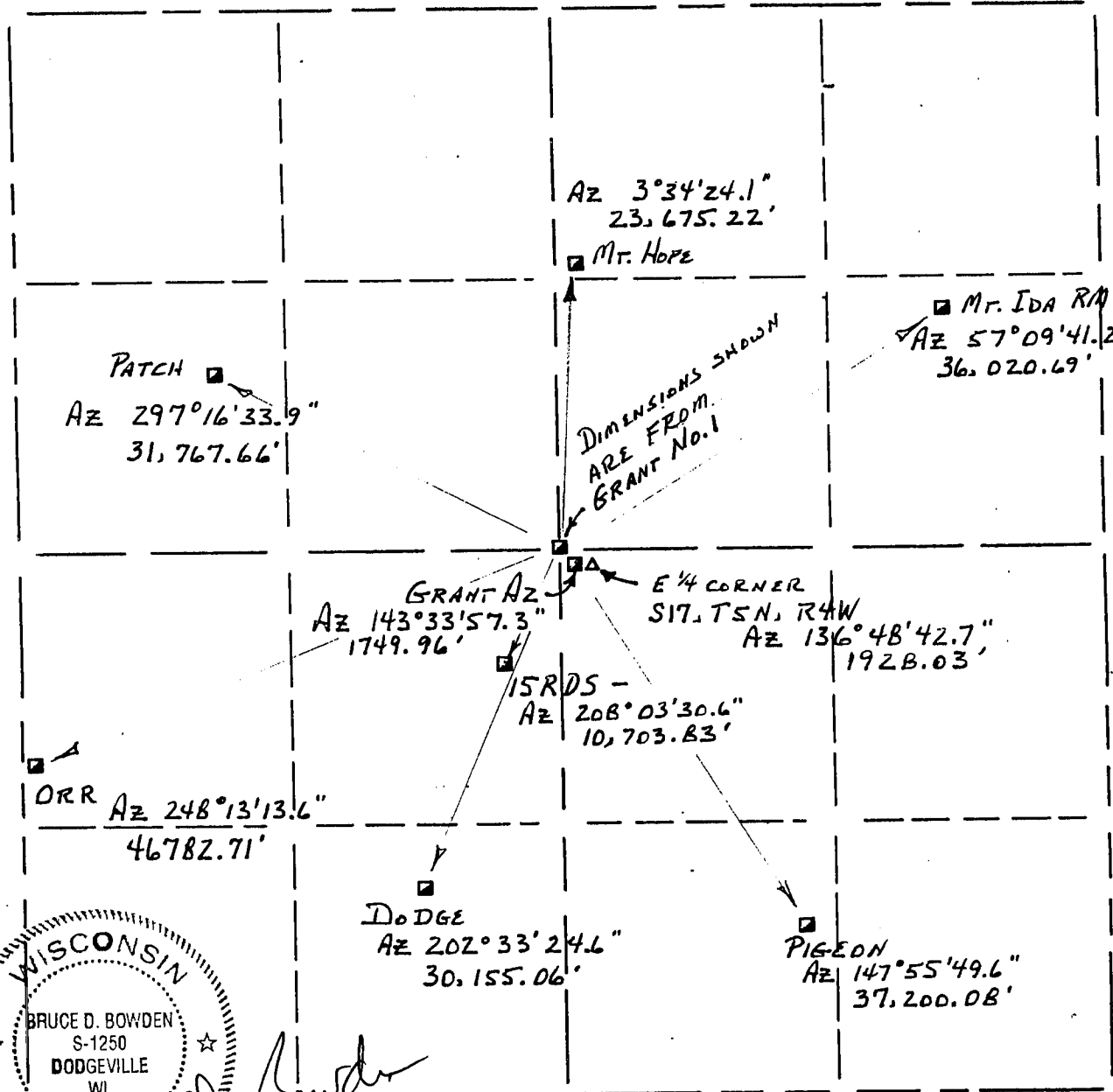


GRANT COUNTY

SPS Section Summary

17 - 5N - 4W
SECTION TOWN RANGE

NATIONAL GEODETIC SURVEY MONUMENT "GRANT" WAS DESTROYED. IT APPEARS TO HAVE BEEN GRADING WORK ALONG THE WEST SIDE OF C.T.H. "J". I HAVE ESTABLISHED COORDINATES ON MONUMENT GRANT No. 1 BY USING THE OTHER MONUMENTS SHOWN.



LEGEND

- △ COUNTY MONUMENT
- STONE OR CONCRETE MONUMENT
- OTHER (specify) _____

NOTE:

Relationships of all section corners to other section corners shall be shown hereon by bearing and distance or grid coordinates

Show or describe bearing reference:
GRANT COUNTY COORDINATES

GRANT No.1 NORTH 547377.884
 EAST 776763.831
 LAT 42°54'47.0773"
 LONG 90°52'05.0472"