

U.S. PUBLIC LAND SURVEY MONUMENT RECORD - GRANT COUNTY, WI

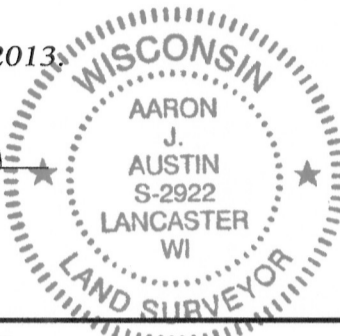
Section 34, Town 5 North Range 4 West, Town of Little Grant

CERTIFICATE:

I, Aaron J. Austin, do hereby certify that the corner location on this record was determined by me and/or under my direct supervision and that this U.S. Public Land Survey Monument Record is correct and complete to the best of my knowledge and belief.

Dated this 11th day of February, 2013.

Aaron J. Austin
 Aaron J. Austin, S-2922



● = CORNER LOCATION

HISTORY OF CORNER ESTABLISHMENT:

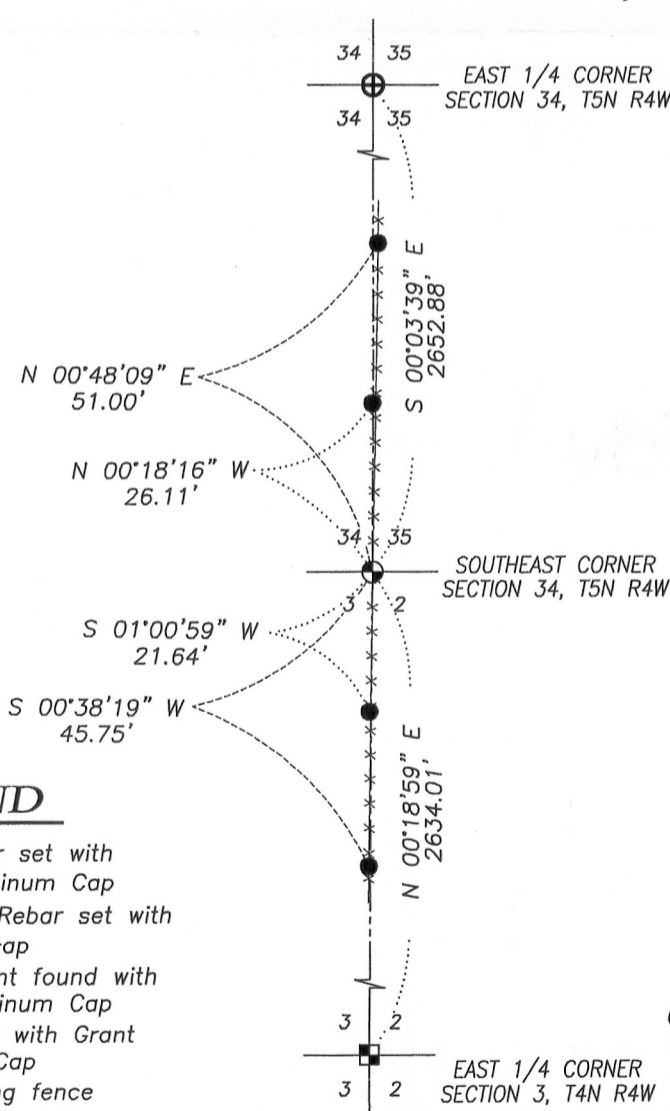
Corner originally set in 1832 by Lucius Lyon. Sam Wiltse measured to the corner in 1844. J.C. Scott measured to the corner in 1882. Larry Austin set a Grant County Aluminum Monument and tied this location in 1993. Larry Austin also measured to this corner in 1998. I measured to this corner in 2012.

DESCRIPTION OF CORNER EVIDENCE FOUND:

I measured to this corner on a survey dated 12-30-2012. At that time, I found the Aluminum Monument set by Larry Austin. I revisited this corner on a survey dated 2-8-2013. The corner and ties established by Larry Austin could not be recovered due to recent bulldozing work done in the area. I reset the corner based upon measurements taken from the survey dated 12-30-2012 and established new ties.

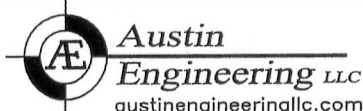
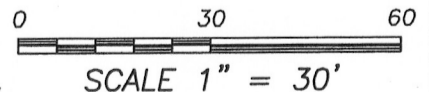
DESCRIPTION OF CORNER AND WITNESS MONUMENTS, references and accessories used to perpetuate the original or re-established location of this corner. Witnesses to corner location Bobby Sedgwick and Shelby Blindert.

SKETCH:



LEGEND

- No. 8 x 24" rebar set with Grant County Aluminum Cap
- Number 4 x 24" Rebar set with red plastic "TIE" cap
- Aluminum Monument found with Grant County Aluminum Cap
- ⊕ No. 8 rebar found with Grant County Aluminum Cap
- x-x- Approximate existing fence



4211 HWY 81 E, LANCASTER, WI 53813
 PHONE: 608-723-6363 FAX: 608-723-6702

JOB NO: 13s004
 G:\T4NR4W\22
 H:\TIE\T5NR4W\125

FIELDBOOK: TDSR
 DRAWN BY: AJ AUSTIN
 CREW: BS-SB