

RECEIVED MAR 26 1999

GRANT COUNTY CERTIFIED LAND CORNER

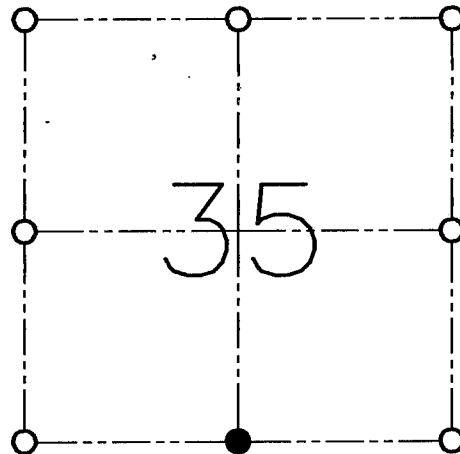
CORNER NO. 124

CERTIFICATE:

I, LARRY L. AUSTIN, DO HEREBY CERTIFY THAT ON SEVENTEENTH DAY OF OCTOBER, 1998, I FOUND NO EVIDENCE OF THE SOUTH 1/4 CORNER OF SECTION 35, TOWN 5 NORTH, RANGE 4 WEST, OF THE FOURTH PRINCIPAL MERIDIAN, AND I RE-ESTABLISHED SAID CORNER ACCORDING TO THE WISCONSIN STATUTES AS SHOWN AND DESCRIBED HEREON.

DATED THIS SEVENTEENTH DAY OF NOVEMBER, 1998

Larry L. Austin
LARRY L. AUSTIN S-1903



● = CORNER LOCATION
SOUTH 1/4 OF SECTION 35
T 5 N R 4 W
TOWN OF LITTLE GRANT

HISTORY OF ORIGINAL CORNER ESTABLISHMENT:

CORNER WAS SET IN 1832 BY SIBLEY.

DESCRIPTION OF CORNER EVIDENCE FOUND:

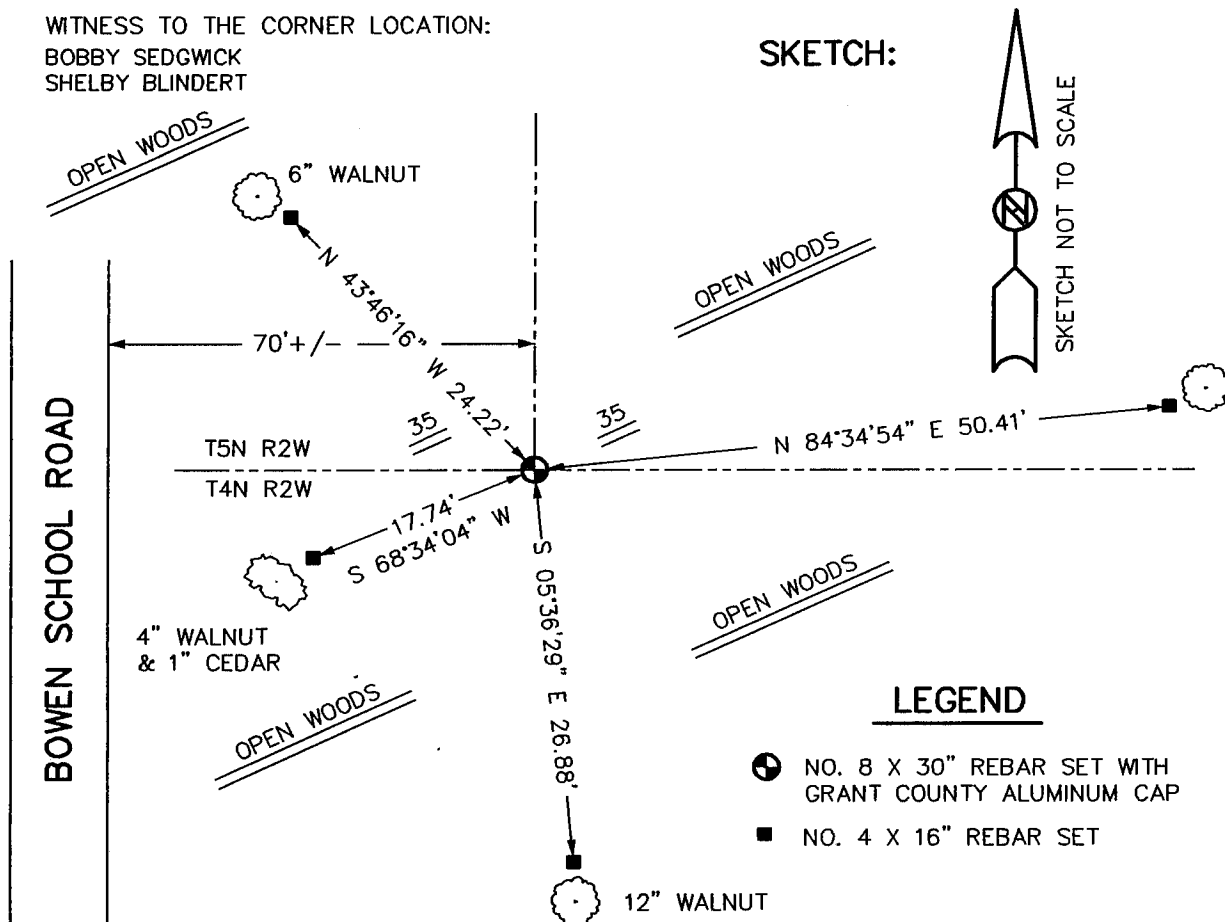
CORNER SET AT A SINGLE PROPORTION ALONG THE SOUTH LINE OF SECTION 35. VERIFIED THIS LOCATION USING E.D.M. AND G.P.S. METHODS.

DESCRIPTION OF CORNER AND WITNESS MONUMENTS, REFERENCES AND ACCESSORIES USED TO PERPETUATE THE ORIGINAL OR RE-ESTABLISHED LOCATION OF THIS CORNER:

WITNESS TO THE CORNER LOCATION:

BOBBY SEDGWICK
SHELBY BLINDERT

SKETCH:



LEGEND

- NO. 8 X 30" REBAR SET WITH GRANT COUNTY ALUMINUM CAP
- NO. 4 X 16" REBAR SET