

U.S. PUBLIC LAND SURVEY MONUMENT RECORD - GRANT COUNTY, WI

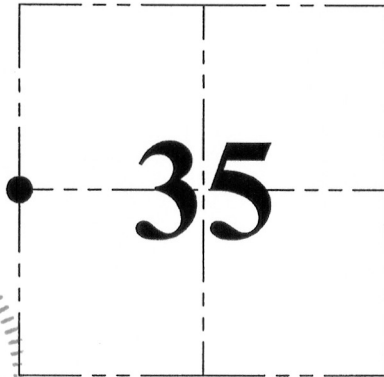
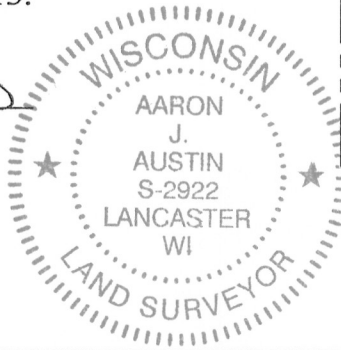
Section 35, Town 5 North Range 4 West, Town of Little Grant

CERTIFICATE:

I, Aaron J. Austin, do hereby certify that the corner location on this record was determined by me and/or under my direct supervision and that this U.S. Public Land Survey Monument Record is correct and complete to the best of my knowledge and belief.

Dated this 30th day of January, 2013.

Aaron J. Austin
 Aaron J. Austin, S-2922



● = CORNER LOCATION

HISTORY OF CORNER ESTABLISHMENT:

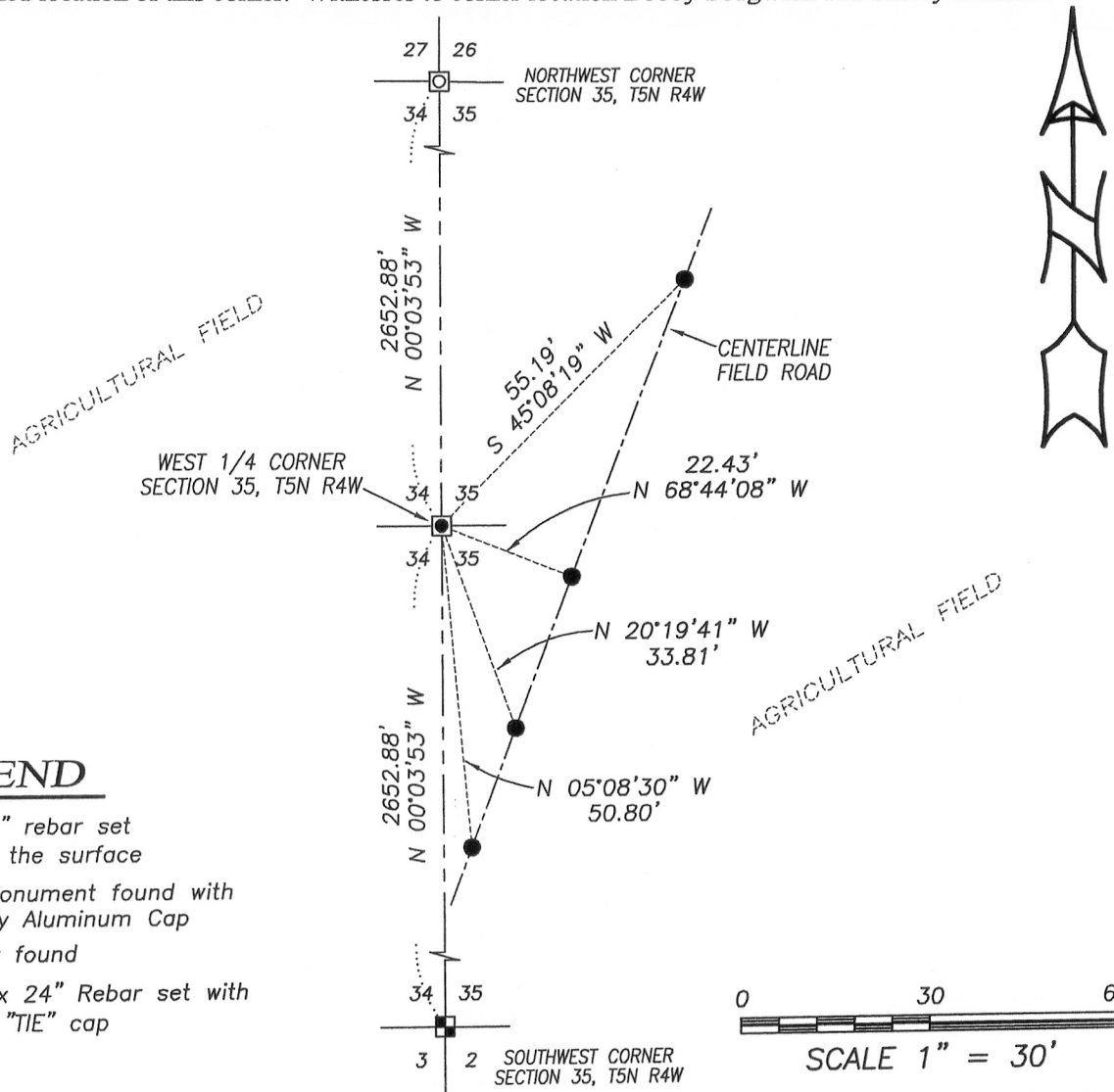
Corner originally set in 1833 by Harvey Parke.
 No other record found of this corner.

DESCRIPTION OF CORNER EVIDENCE FOUND:

Corner falls in tilled agricultural field. No evidence found for this corner. I reset the corner equidistant and online between the Northwest corner and Southwest corner of Section 35. This location was verified with E.D.M. and G.P.S. methods.

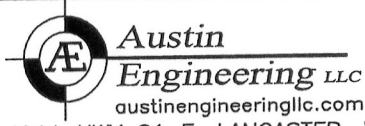
DESCRIPTION OF CORNER AND WITNESS MONUMENTS, references and accessories used to perpetuate the original or re-established location of this corner. Witnesses to corner location Bobby Sedgwick and Shelby Blindert.

SKETCH:



LEGEND

- No. 8 x 24" rebar set 18"± below the surface
- Aluminum Monument found with Grant County Aluminum Cap
- No. 8 rebar found
- Number 4 x 24" Rebar set with red plastic "TIE" cap



4211 HWY 81 E, LANCASTER, WI 53813
 PHONE: 608-723-6363 FAX: 608-723-6702

JOB NO: 12s252
 G:\T5NR4W\35A
 H:\TIE\T5NR4W\118

FIELDBOOK: TDSR
 DRAWN BY: AJ AUSTIN
 CREW: BS-SB