

U.S. PUBLIC LAND SURVEY MONUMENT RECORD - GRANT COUNTY, WI

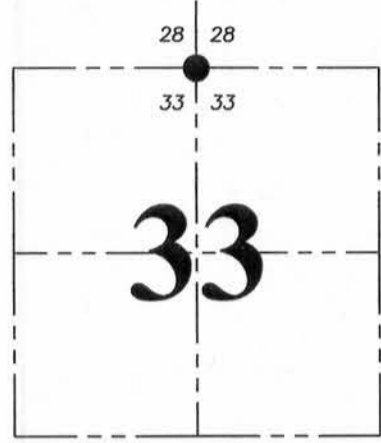
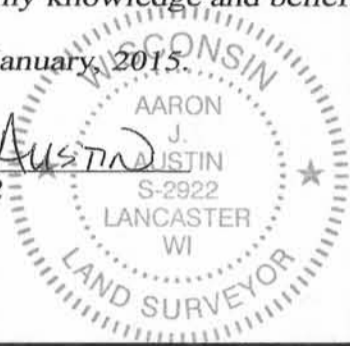
Section 33, Town 5 North Range 4 West, Town of Little Grant

CERTIFICATE:

I, Aaron J. Austin, Professional Wisconsin Land Surveyor, do hereby certify that the corner location on this record was determined by me and/or under my direct supervision and that this U.S. Public Land Survey Monument Record is correct and complete to the best of my knowledge and belief.

Dated this 30th day of January, 2015.

Aaron J. Austin
 Aaron J. Austin, S-2922



● = CORNER LOCATION

HISTORY OF CORNER ESTABLISHMENT:

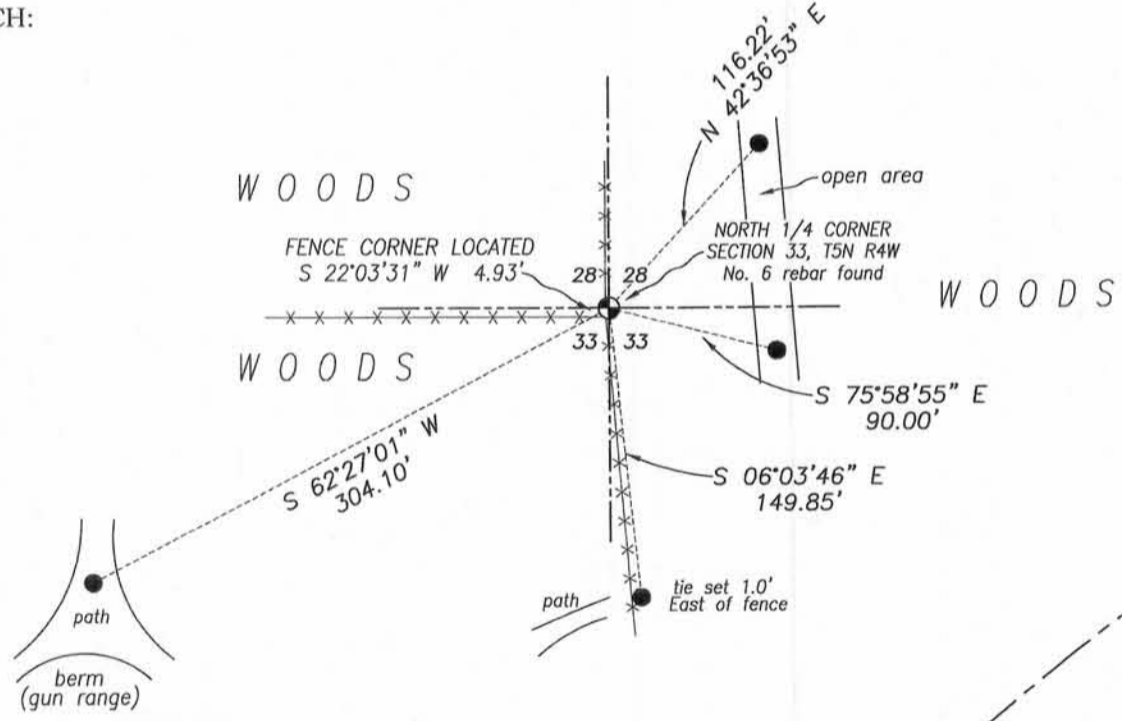
- 1833-Harvey Parke set original corner.
- 1982-Ronald Brys set a No. 6 rebar and filed a U.S. Public Land Survey Monument Record
- 2002-Larry Austin tied to the corner on a Survey in Book 11, Page 37.
- 2002-Larry Austin tied to the corner on a Survey in Book 12, Page 23.
- No other record was found for this corner.

DESCRIPTION OF CORNER EVIDENCE FOUND:

I found a No. 6 rebar at Brys's location. No witness monuments were recovered for this corner. I set 4 new witness corners as shown hereon. The corner location was verified by E.D.M. and G.P.S. methods.

DESCRIPTION OF CORNER AND WITNESS MONUMENTS, references and accessories used to perpetuate the original or re-established location of this corner. Witnesses to corner location Shane Austin.

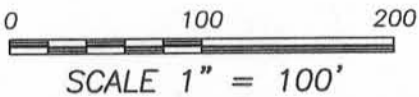
SKETCH:



Bearings referenced to the Grant County Coordinate System (2011 adjustment) which was determined by G.P.S. observation.

LEGEND

- Section Corner—as designated
- No. 4 x 12" rebar set with plastic red "tie" cap
- *- Approximate location of fence



4211 HWY 81 E, LANCASTER, WI 53813
 PHONE: 608-723-6363 FAX: 608-723-6702

JOB NO: 14s226
 H:\CRD\14s226-SKEMP
 H:\TIE\T5NR4W\108

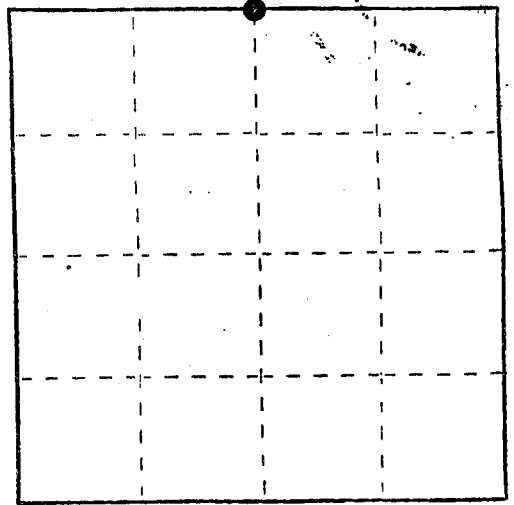
FIELDBOOK: TDSR
 DRAWN BY: AJ AUSTIN
 CREW: SW AUSTIN

U. S. PUBLIC LAND SURVEY MONUMENT RECORD

INSTRUCTIONS: This record shall show the location of the corner and shall include all of the following nine elements (a through i).

- (a) Identify the corner by reference to the U.S. public land survey system.
 O = Corner monument restored.

North $\frac{1}{4}$ corner Section 33, T. 5 N.,
 R. 4, W., Township of Little Grant,
 Grant County, Wisconsin.



- (b) Describe any record evidence, monument evidence, occupational evidence, testimonial evidence or any other material evidence you considered, and whether the monument was found or placed.

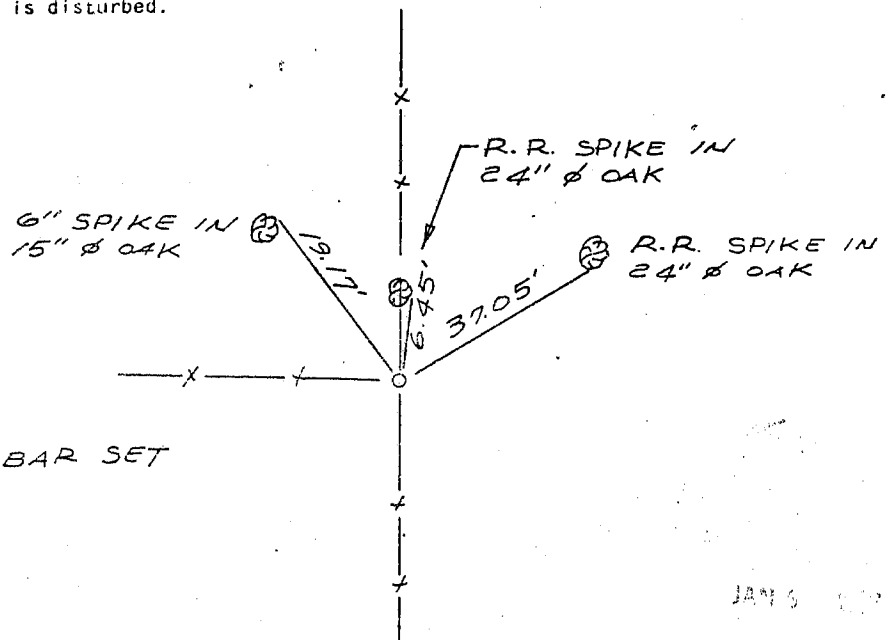
No record since original government survey.

Old fences intersecting from the north, south, and west.

Monument was placed at fence intersections.

- (c) In the plan view drawing below, provide reference ties to at least 4 witness monuments, or, if the location is within a municipality, to at least 2 witness monuments. (Witness monuments shall be made of concrete, natural stone, iron or other equally durable material.) Describe witness monuments.

- (d) Show a plan view drawing depicting the relevant monuments and reference ties which is sufficient in detail to enable accurate relocation of the corner monument if the corner monument is disturbed. Indicate north.



LEGEND

O --- 3/4" ϕ REBAR SET

JAN 6 1908

10108

(e) Describe any material discrepancy between the location of the corner as restored or reestablished and the location of that corner as previously restored or reestablished by distance and direction. Show the discrepancy on the plan view drawing under (d), above. Show the distances between the corner as previously restored or reestablished and (1) the corner as restored or reestablished, and (2) to at least 2 of the witness monuments shown on the drawing in (d), above.

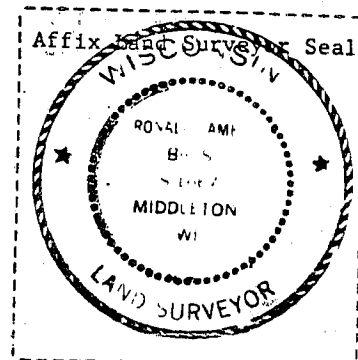
None

(f) Was the corner restored through acceptance of (1) an obliterated evidence location, or, (2) a found perpetuated location?

Corner restored through acceptance of a found perpetuated location.

(g) Was the corner reestablished through lost corner proportionate methods? If so, show the method, including the directions and distances to other public land survey corners used as evidence or used for proportioning in determining the corner location?

No adjacent corners found.



(i) I, Ronald J. Brys
(type or print name) certify that the corner location shown on this record was determined by me or under my direction and control and that this U.S. Public Land Survey Monument Record is correct and complete to the best of my knowledge and belief.

Ronald Brys S-1667
Signature

11-26-82
Date