

U.S. PUBLIC LAND SURVEY MONUMENT RECORD - GRANT COUNTY, WI

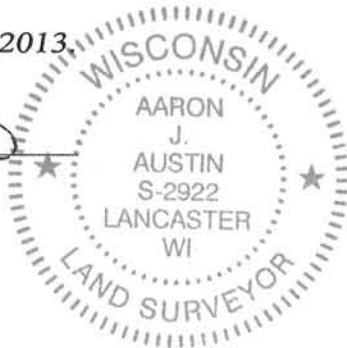
Section 35, Town 5 North Range 4 West, Town of Little Grant

CERTIFICATE:

I, Aaron J. Austin, do hereby certify that the corner location on this record was determined by me and/or under my direct supervision and that this U.S. Public Land Survey Monument Record is correct and complete to the best of my knowledge and belief.

Dated this 30th day of January, 2013.

Aaron J. Austin
 Aaron J. Austin, S-2922



● = CORNER LOCATION

HISTORY OF CORNER ESTABLISHMENT:

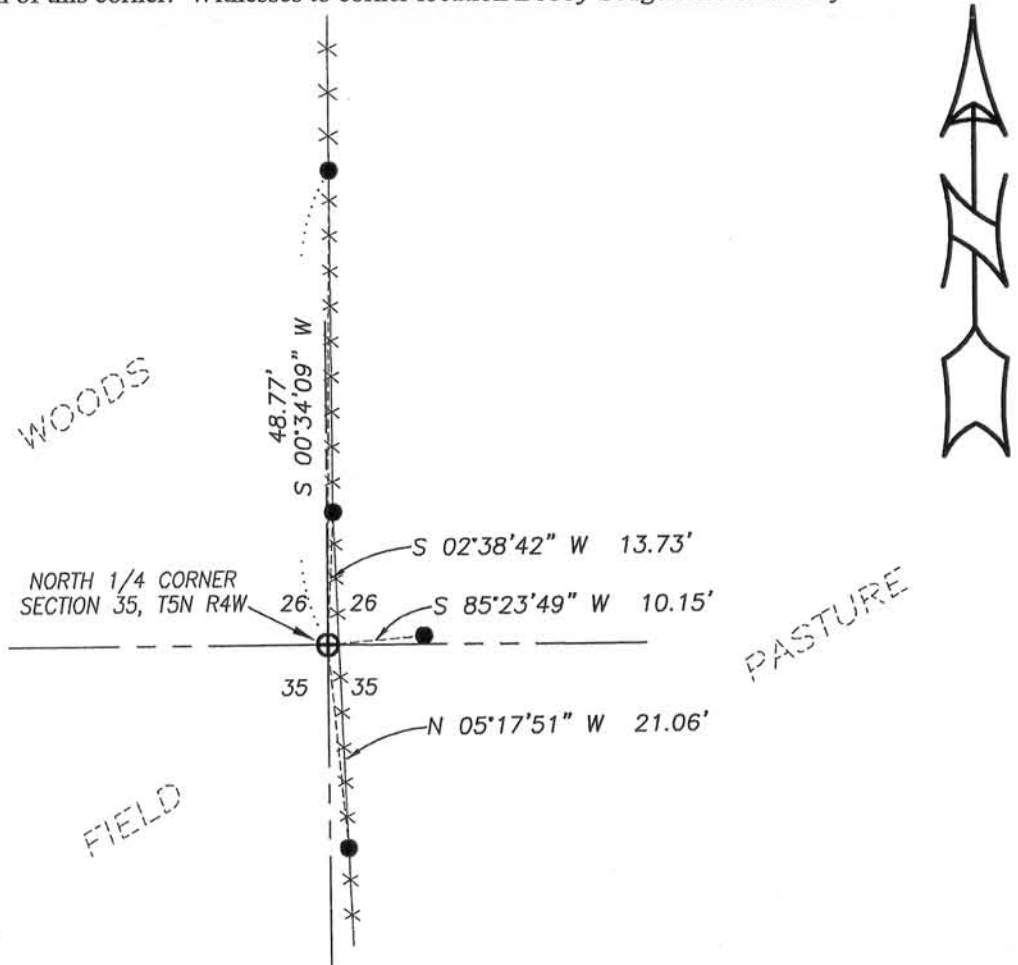
Corner originally set in 1833 by Harvey Parke.
 In 1977 David Krohn showed a wood corner post as the corner.
 In 1990 Larry Austin set a No. 8 rebar and prepared a tie sheet dated 12-20-1990.

DESCRIPTION OF CORNER EVIDENCE FOUND:

I found a No. 8 rebar at the corner location. The ties to this corner were not recovered. I set new ties after I verified it's location from existing monuments of a survey prepared by Larry Austin dated 10-19-1998. This location was verified with E.D.M. and G.P.S. methods.

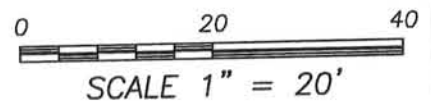
DESCRIPTION OF CORNER AND WITNESS MONUMENTS, references and accessories used to perpetuate the original or re-established location of this corner. Witnesses to corner location Bobby Sedgwick and Shelby Blindert.

SKETCH:



LEGEND

- ⊕ No. 8 rebar found
- Number 4 x 24" Rebar set with red plastic "TIE" cap



Austin Engineering LLC
 austinengineeringllc.com

4211 HWY 81 E, LANCASTER, WI 53813
 PHONE: 608-723-6363 FAX: 608-723-6702

JOB NO: 12s252
 G:\T5NR4W\35A
 H:\TIE\T5NR4W\104

FIELDBOOK: TDSR
 DRAWN BY: AJ AUSTIN
 CREW: BS-SB

U. S. PUBLIC LAND SURVEY MONUMENT RECORD

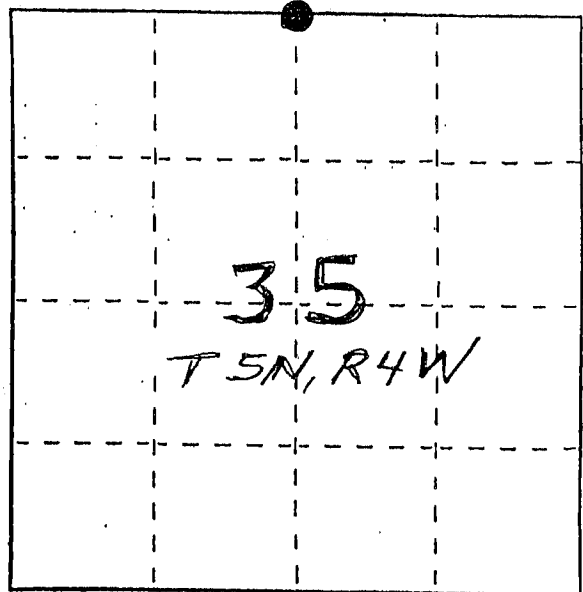
INSTRUCTIONS: This record shall show the location of the corner and shall include all of the following nine elements (a through i).

- (a) Identify the corner by reference to the U.S. public land survey system.
 ● = Corner monument restored.

N 1/4 CORNER, SEC. 35, T5N
 R4W, LITTLE GRANT TWP,
 GRANT CO., WISC.

RECORDED

JUN 10 1991



- (b) Describe any record evidence, monument evidence, occupational evidence, testimonial evidence or any other material evidence you considered, and whether the monument was found or placed.

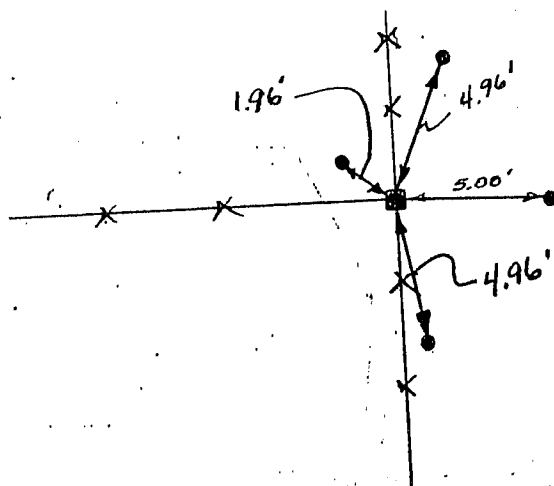
MONUMENT PLACED AT OCCUPIED LOCATION
 & VERIFIED BY EDM TRAVERSE

- (c) In the plan view drawing below, provide reference ties to at least 4 witness monuments, or, if the location is within a municipality, to at least 2 witness monuments. (Witness monuments shall be made of concrete, natural stone, iron or other equally durable material.) Describe witness monuments.

- (d) Show a plan view drawing depicting the relevant monuments and reference ties which is sufficient in detail to enable accurate relocation of the corner monument if the corner monument is disturbed. Indicate north.

LEGEND

- 3/8" x 10" STEEL SPIKE SET = TIE
- 1" x 24" ROUND REBAR SET = 1/4 CORNER
- X—X— EXISTING FENCE



NO SCALE

104

(e) Describe any material discrepancy between the location of the corner as restored or reestablished and the location of that corner as previously restored or reestablished by distance and direction. Show the discrepancy on the plan view drawing under (d), above. Show the distances between the corner as previously restored or reestablished and (1) the corner as restored or reestablished, and (2) to at least 2 of the witness monuments shown on the drawing in (d), above.

Note

(f) Was the corner restored through acceptance of (1) an obliterated evidence location, or, (2) a found perpetuated location?

(2) FOUND PERPETUATED LOCATION

(g&h) Was the corner reestablished through lost corner proportionate methods? If so, show the method, including the directions and distances to other public land survey corners used as evidence or used for proportioning in determining the corner location?

No.

Affix Land Surveyor Seal

LARRY L. AUSTIN
(type or print name) certify that the corner location shown on this record was determined by me or under my direction and control and that this U.S. Public Land Survey Monument Record is correct and complete to the best of my knowledge and belief.

Larry L. Austin

Date

12/20/90