

U.S. PUBLIC LAND SURVEY MONUMENT RECORD - GRANT COUNTY, WI

Section 27, Town 5 North Range 4 West, Town of Little Grant (a)

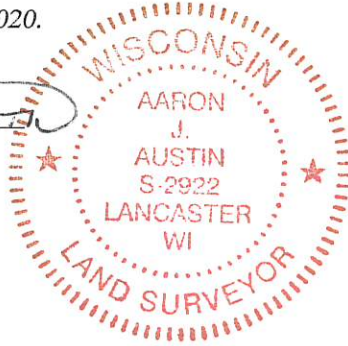
NOTE: This form is intended and designed to fulfill all requirements of the Wisconsin Administrative Code Chapter A-E 7.08, U.S. Public Land Survey Monument Record (3) (a) (b) (c) (d) (e) (f) (g) (h) (i).

CERTIFICATE: (i)

I, Aaron J. Austin, Wisconsin Professional Land Surveyor, do hereby certify that the corner location on this record was determined by me and/or under my direct supervision and that this U.S. Public Land Survey Monument Record is correct and complete to the best of my knowledge and belief.

Dated this 5th day of November, 2020.

Aaron J. Austin
Aaron J. Austin, S-2922



☉ = CORNER LOCATION

Grant County Coordinates:
NAD 83 (2011)
Northing: 538,034.00
Easting: 783,484.92

HISTORY OF CORNER ESTABLISHMENT:

Original corner was set in 1833 by Henry Parke.
Larry Austin set a 1" Rebar with a Grant County Aluminum Cap and prepared a Survey Monument Record dated 12/26/2001.

DESCRIPTION OF CORNER EVIDENCE FOUND: (b) (f) (g) (h)

I set a 7/8" Rebar from two existing witness corners. I established two additional witness corners after I verified the Monument's location with G.P.S. and E.D.M. methods.

DESCRIPTION OF CORNER AND WITNESS MONUMENTS, references and accessories used to perpetuate the

original or re-established location of this corner. (c) (d) (e)

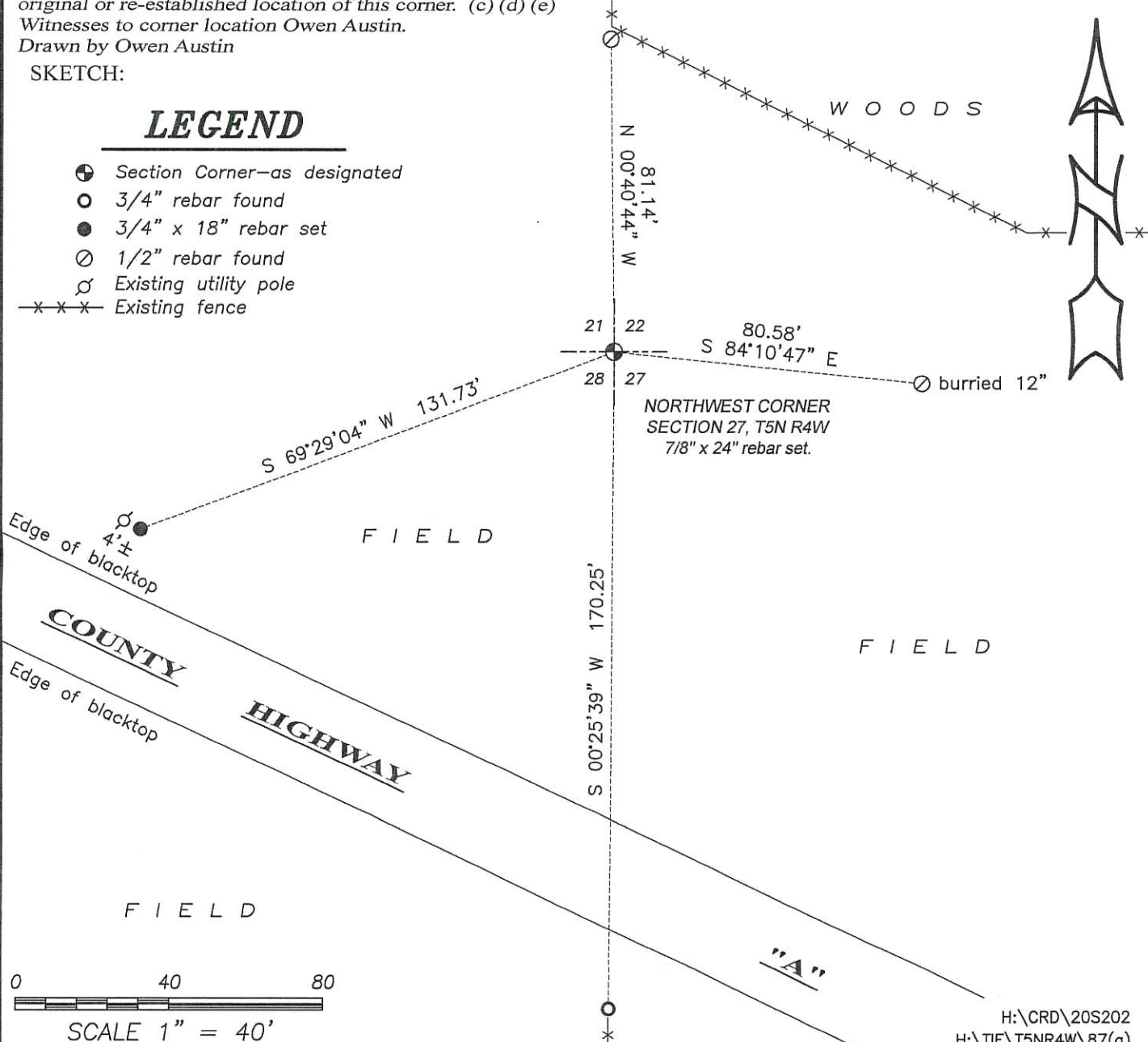
Witnesses to corner location Owen Austin.

Drawn by Owen Austin

SKETCH:

LEGEND

- ☉ Section Corner—as designated
- 3/4" rebar found
- 3/4" x 18" rebar set
- 1/2" rebar found
- ♂ Existing utility pole
- x-x-x- Existing fence



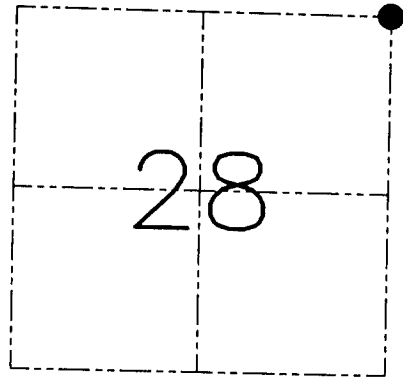
U.S. PUBLIC LAND SURVEY MONUMENT RECORD - GRANT COUNTY, WI
 Section 28, Town 5 North Range 4 West, Town of Little Grant

CERTIFICATE

I, Larry L. Austin, do hereby certify that the corner location on this record was determined by me and/or under my direct supervision and that this U.S. public land survey monument record is correct and complete to the best of my knowledge and belief.

Dated this 26th day of December, 2001

Larry L. Austin
 Larry L. Austin S-1903



● = CORNER LOCATION

HISTORY OF CORNER ESTABLISHMENT

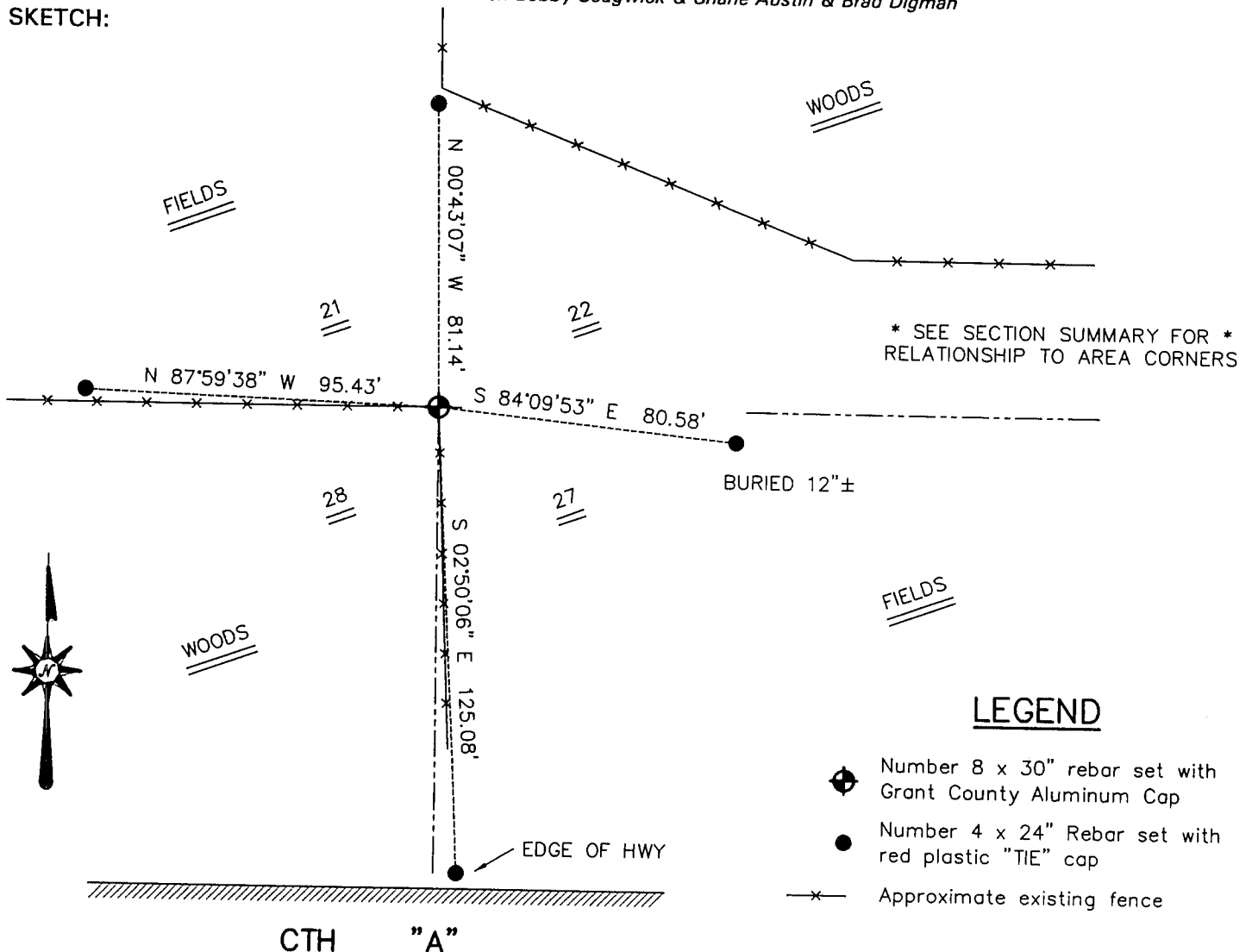
Corner was originally set in 1833 by Harvey Parke.
 No other record of the corner was found.

DESCRIPTION OF CORNER EVIDENCE FOUND

I reset the corner at an occupied location. This location fit adjoining corners in the area. Verified this location using EDM & GPS methods.

DESCRIPTION OF CORNER AND WITNESS MONUMENTS, references and accessories used to perpetuate the original or re-established location of this corner. Witnesses to the corner location Bobby Sedgwick & Shane Austin & Brad Digman

SKETCH:



LEGEND

- Number 8 x 30" rebar set with Grant County Aluminum Cap
- Number 4 x 24" Rebar set with red plastic "TIE" cap
- x- Approximate existing fence

SKETCH NOT TO SCALE

AUSTIN ENGINEERING, LLC

4211 HWY 81 EAST, LANCASTER, WI 53813
 PHONE 608-723-6363 FAX 608-723-6702

FIELDBOOK: SDR33, 2119

G: \T5NR4W\28
 C: \SWA\TIE\T5NR4W\87
 CREW: BS-SB-SA-BD

DRAWN BY: SW AUSTIN
 APPROVED: LL AUSTIN

CORNER NUMBER 87