

54080

U.S. PUBLIC LAND SURVEY MONUMENT RECORD - GRANT COUNTY, WI

Section 22, Town 5 North Range 4 West, Town of Little Grant (a)

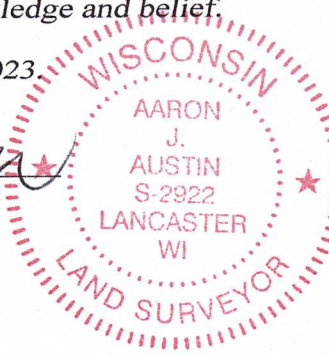
NOTE: This form is intended and designed to fulfill all requirements of the Wisconsin Administrative Code Chapter A-E 7.08, U.S. Public Land Survey Monument Record (3) (a) (b) (c) (d) (e) (f) (g) (h) (i).

CERTIFICATE: (i)

I, Aaron J. Austin, Wisconsin Professional Land Surveyor, do hereby certify that the corner location on this record was determined by me and/or under my direct supervision and that this U.S. Public Land Survey Monument Record is correct and complete to the best of my knowledge and belief.

Dated this 13th day of March, 2023.

Aaron J. Austin
Aaron J. Austin, S-2922



Grant County Coordinates:
NAD 83 (2011)
Northing: 538,021.57
Easting: 786,112.99

HISTORY OF CORNER ESTABLISHMENT:

Original corner was set in 1833 by Harvey Parke.
Thomas Buck set a 3/4" Rebar and prepared a Survey Monument Record dated 5/6/1999.

DESCRIPTION OF CORNER EVIDENCE FOUND: (b) (f) (g) (h)

I found two witness corners Buck set. I set a 3/4" x 18" Rebar from the existing ties. I set two additional witness corners after I verified the Monument's location with G.P.S. and E.D.M. methods.

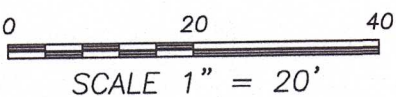
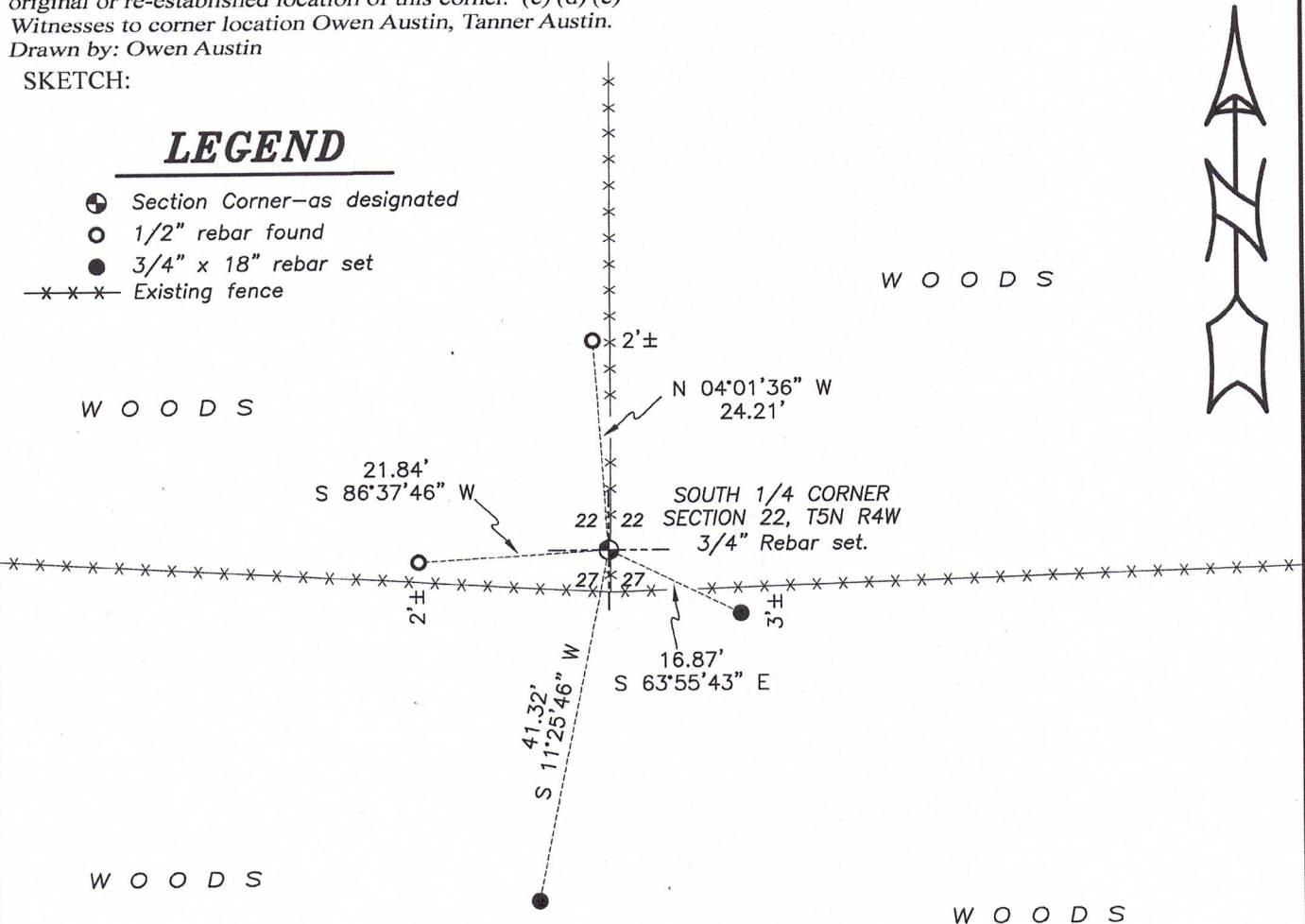
DESCRIPTION OF CORNER AND WITNESS MONUMENTS, references and accessories used to perpetuate the original or re-established location of this corner. (c) (d) (e)

Witnesses to corner location Owen Austin, Tanner Austin.
Drawn by: Owen Austin

SKETCH:

LEGEND

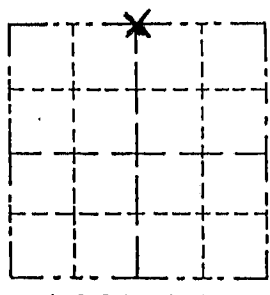
- ⊕ Section Corner—as designated
- 1/2" rebar found
- 3/4" x 18" rebar set
- x-x-x- Existing fence



Survey Monument Record

TYPE OF MONUMENT 3/4" X 24"
 STATE PLANE COORDINATES: N _____
 E _____
 ELEVATION — M.S.L. DATUM: _____
 THETA ANGLE: _____
 FIELD BOOK: _____
 PAGE _____

CORNER NO. _____
 SECTION 27
 TOWN 5 NORTH
 RANGE 4 WEST



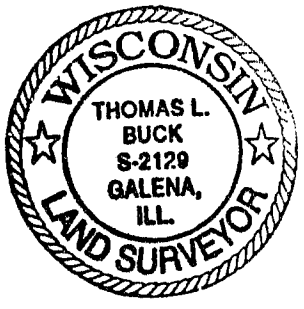
LOCATION
 (Indicated by "X")

- FOUND PERPETUATED LOCATION
- OBLITERATED EVIDENCE LOCATION
- LOST CORNER (RESTORED BY PROPORTIONATE METHODS)

BASIS FOR MONUMENT LOCATION

(Use reverse side if necessary)
 Show info such as: History of corner, with reference to Vol. and pg., dates, surveyor; exact description of monument replaced; if location computed, by taped or EDM traverse; landowner, remarks, etc.

THE MONUMENT WAS PLACED AT THE OCCUPIED FENCE CORNER AFTER A COMPLETE SURVEY BY AN EDM TRAVERSE OF SECTION 27.



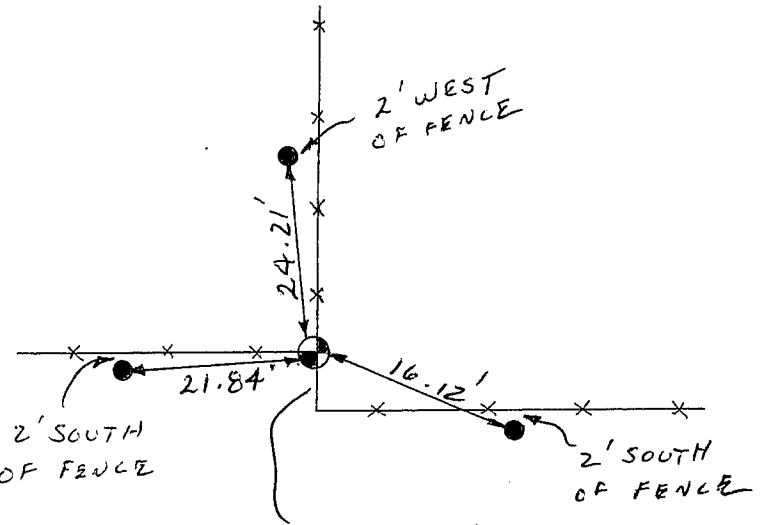
CERTIFIED CORRECT TO THE BEST OF MY KNOWLEDGE AND BELIEF

Thomas L. Buck
 Registered Land Surveyor

DATE: 5/6/99

TIE SKETCH

Show at least three (3) ties and monument



NO SCALE

- = 3/4" X 24" IRON ROD SET
- = 1/2" IRON ROD
- = EXISTING FENCE

NOTE: 4.82' JOG IN FENCE CORNERS DUE TO BOW IN SOUTHERLY FENCE LINE.