

# U.S. PUBLIC LAND SURVEY MONUMENT RECORD - GRANT COUNTY, WI

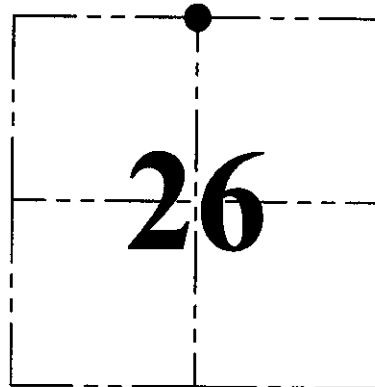
Section 26, Town 5 North Range 4 West, Town of Little Grant

**CERTIFICATE:**

I, Aaron J. Austin, Wisconsin Professional Land Surveyor, do hereby certify that the corner location on this record was determined by me and/or under my direct supervision and that this U.S. Public Land Survey Monument Record is correct and complete to the best of my knowledge and belief.

Dated this 23<sup>rd</sup> day of April, 2015.

Aaron J. Austin  
 Aaron J. Austin, Lancaster WI  
 LAND SURVEYOR



● = CORNER LOCATION

**HISTORY OF CORNER ESTABLISHMENT:**

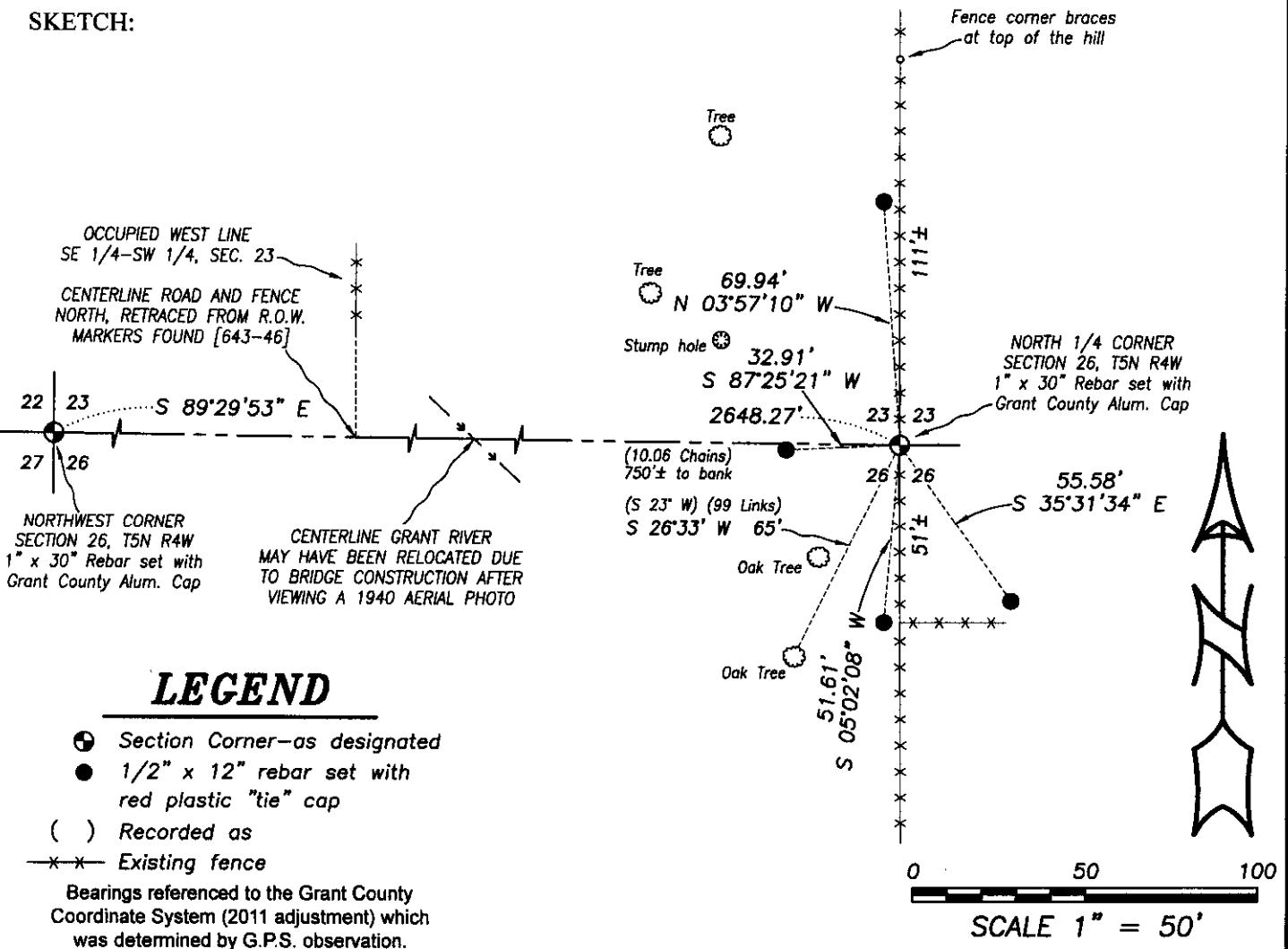
1833-Parke set original corner.  
 1849-Stuntz shown the corner on a Survey in Book B, Page 175.  
 1987-Corner was shown on R/W Project No. 5686-0-02  
 No other record was found for this corner.

**DESCRIPTION OF CORNER EVIDENCE FOUND:**

I retraced the Northwest corner of the NE 1/4 of the NW 1/4 using existing R.O.W. markers used to described Volume 643, Page 46. This location fit very well with an occupied fence line to the North and centerline of Govier Road. I projected a line from the Northwest corner of Section 26 through the above described 40 corner retracement and intersected it with a North-South fence line. I measured to a few Oak Trees in the area of the corner and found one that checked extremely well with the Original Notes. I verified this location with E.D.M. and G.P.S. methods.

**DESCRIPTION OF CORNER AND WITNESS MONUMENTS, references and accessories used to perpetuate the original or re-established location of this corner. Witnesses to corner location Shane Austin.**

**SKETCH:**



**LEGEND**

- ⊕ Section Corner—as designated
  - 1/2" x 12" rebar set with red plastic "tie" cap
  - ( ) Recorded as
  - x— Existing fence
- Bearings referenced to the Grant County Coordinate System (2011 adjustment) which was determined by G.P.S. observation.



**Austin Engineering LLC**  
 austinengineeringllc.com

4211 HWY 81 E, LANCASTER, WI 53813  
 PHONE: 608-723-6363 FAX: 608-723-6702

JOB NO: 15S059  
 H:\CRD\15s059  
 H:\TIE\T5NR4W\85

FIELDBOOK: TDSR  
 DRAWN BY: AJ AUSTIN  
 CREW: SW AUSTIN