

U.S. PUBLIC LAND SURVEY MONUMENT RECORD - GRANT COUNTY, WI

Section 24, Town 5 North Range 4 West, Town of Little Grant (a)

NOTE: This form is intended and designed to fulfill all requirements of the Wisconsin Administrative Code Chapter A-E 7.08, U.S. Public Land Survey Monument Record (3) (a) (b) (c) (d) (e) (f) (g) (h) (i).

CERTIFICATE: (i)

I, Aaron J. Austin, Wisconsin Professional Land Surveyor, do hereby certify that the corner location on this record was determined by me and/or under my direct supervision and that this U.S. Public Land Survey Monument Record is correct and complete to the best of my knowledge and belief.

Dated this 9th day of January, 2023.

Aaron J. Austin
Aaron J. Austin, S-2922



Grant County Coordinates:
NAD 83 (2011)
Northing: 537,906.59
Easting: 799,283.84

HISTORY OF CORNER ESTABLISHMENT:

Original corner was set in 1832 by Lucius Lyon.
Larry Austin set a Grant County Aluminum Monument and prepared a Survey Monument Record dated 1-8-1996.

DESCRIPTION OF CORNER EVIDENCE FOUND: (b) (f) (g) (h)

No evidence of Monument or witness corners could be found. I set a 1" x 24" Rebar online from the East 1/4 Corner through the Southwest Corner of the Northwest of the Southwest of Section 19, at the recorded distance from a Survey filed in Book 17, Page 36. I set four witness corners after I verified the Monument's location with G.P.S. and E.D.M. methods.

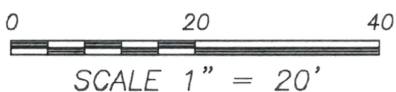
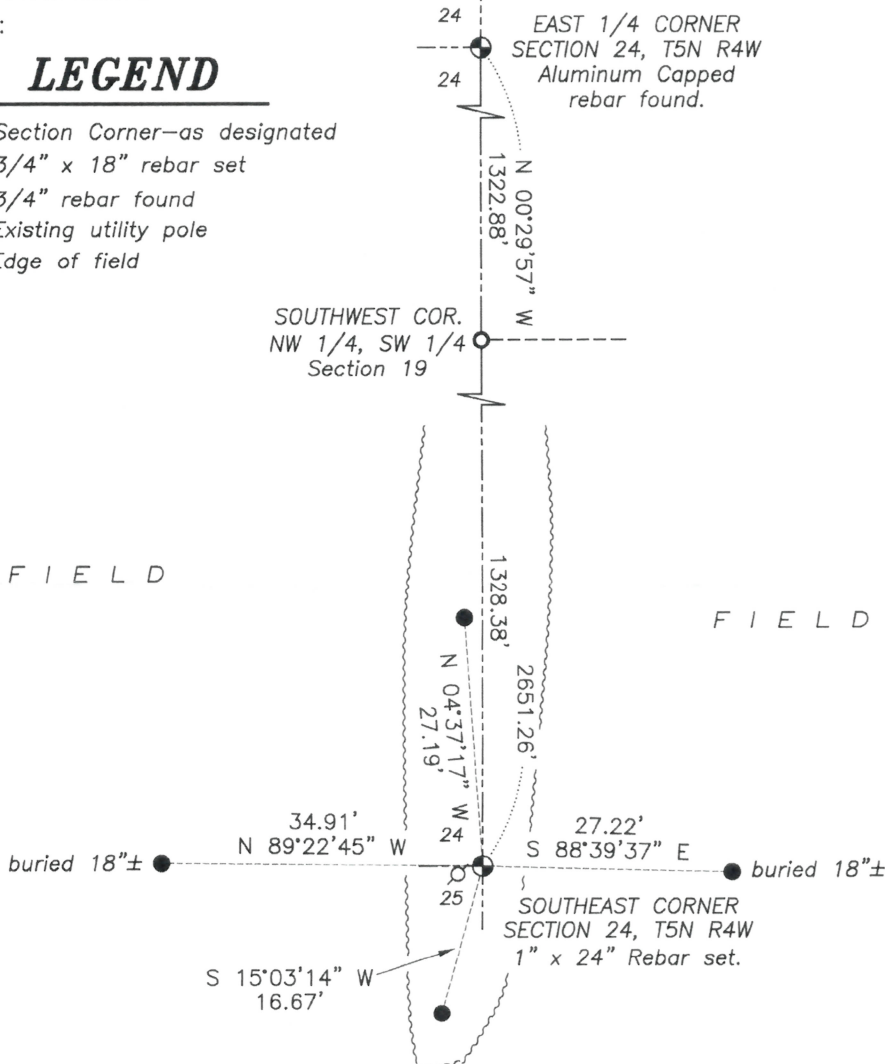
DESCRIPTION OF CORNER AND WITNESS MONUMENTS, references and accessories used to perpetuate the original or re-established location of this corner. (c) (d) (e)

Witnesses to corner location Owen Austin, Tanner Austin.
Drawn by: Owen Austin.

SKETCH:

LEGEND

- ⊕ Section Corner—as designated
- 3/4" x 18" rebar set
- 3/4" rebar found
- ⊘ Existing utility pole
- ~~~~~ Edge of field



GRANT COUNTY

Survey Monument Record

REC'D JAN 29 1996

CORNER NO. 81
 SECTION 25
 TOWN 5N
 RANGE 4W

TYPE OF MONUMENT GRANT Co. Alum. Mon SET

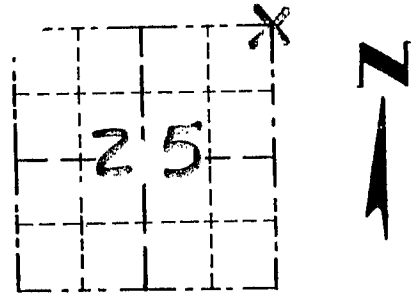
STATE PLANE COORDINATES: N _____
 E _____

ELEVATION — M.S.L. DATUM: _____

THETA ANGLE: _____

FIELD BOOK: 95-13

PAGE 34



LOCATION
 (Indicated by "X")

BASIS FOR MONUMENT LOCATION

(Use reverse side if necessary)

SEAL:

A 1/2" x 24" IRON PIPE FOUND AT THE OCCUPIED FENCE CORNER.

FOUND PIPE WAS REPLACED WITH A GRANT COUNTY ALUMINUM MONUMENT AFTER VERIFICATION BY EDM TRAVERSE OF THE AREA.

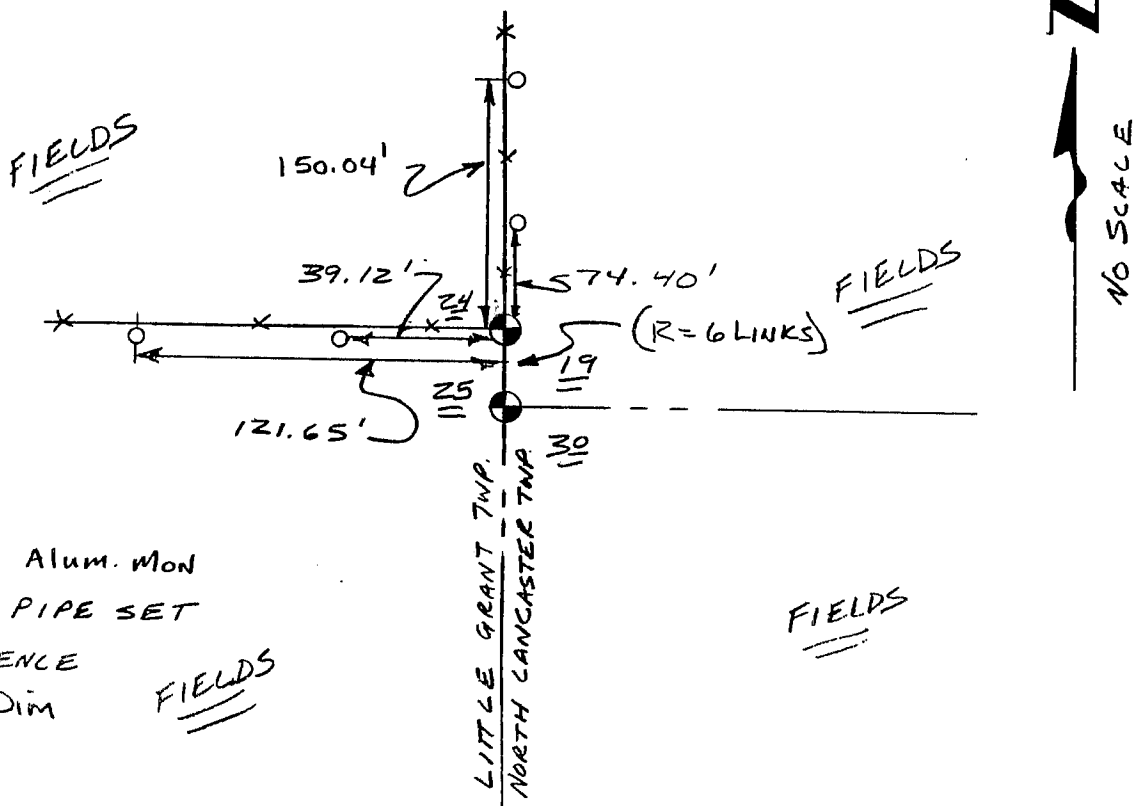
CERTIFIED CORRECT

Randy S. Gust
 Registered Land Surveyor

DATE: 1/8/96

TIE SKETCH

Show at least three (3) ties and monument



LEGEND

⊕ GRANT COUNTY Alum. Mon

○ 1/2" x 24" IRON PIPE SET

xx STING FENCE

() RECORDED DIM